

On average, women make

78¢ for every
dollar

that a man earns.¹

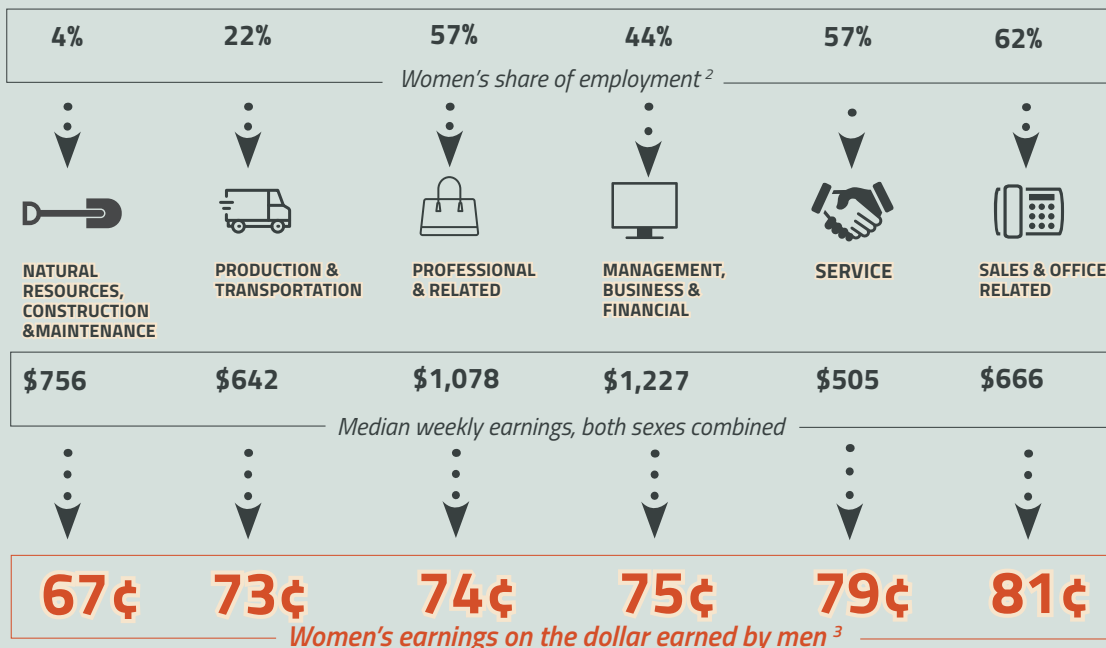


EQUAL PAY

One key factor that contributes to the wage gap is

GENDER DIFFERENCES ACROSS OCCUPATIONS

Women represent almost half of the total workforce (47%),
but their share of employment varies considerably
across occupational groups



WOMEN'S BUREAU
U.S. Department of Labor

dol.gov/equalpay

April 2015

While women are 57% of workers in and , a closer look reveals disparities among high and low-paying types of jobs.⁴



PROFESSIONAL & RELATED



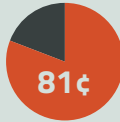
COMPUTER & MATHEMATICAL
\$1,368



COMMUNITY & SOCIAL SERVICE
\$858



ARCHITECTURE & ENGINEERING
\$1,227



EDUCATION, TRAINING & LIBRARY
\$953



Median weekly earnings (both sexes)

Women's share of employment

Women's earnings on the dollar earned by men

Median weekly earnings (both sexes)

Women's share of employment

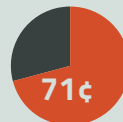
Women's earnings on the dollar earned by men



SERVICE



POLICE & SHERIFF'S PATROL OFFICERS
\$1,018



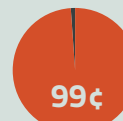
FOOD PREPARATION & SERVING WORKERS, FAST FOOD
\$379



BAILIFFS, CORRECTIONAL OFFICERS & JAILERS
\$730



MAIDS & HOUSEKEEPING CLEANERS
\$401



Median weekly earnings (both sexes)

Women's share of employment

Women's earnings on the dollar earned by men

Median weekly earnings (both sexes)

Women's share of employment

Women's earnings on the dollar earned by men

The wage gap varies considerably across occupations, but overall,
WOMEN EARN LESS THAN MEN

¹ Based on 2013 median annual earnings of workers 15 years and older who worked full time and year-round, including the self-employed. *Source: U.S. Census Bureau.*

² Women's share of employment is based on total employed. *Source: U.S. Bureau of Labor Statistics*

³ Based on 2014 median weekly earnings of full-time wage and salary workers 16 years and over, excluding the self-employed. *Source: U.S. Bureau of Labor Statistics.*

⁴ The two highest paid and two lowest paid occupational groups or detailed occupations with at least 50,000 employed men and 50,000 employed women within these classifications.