



News Release

Connect with DOL at
<https://blog.dol.gov>



TRANSMISSION OF MATERIALS IN THIS RELEASE IS EMBARGOED UNTIL
8:30 A.M. (Eastern) Thursday, January 21, 2021

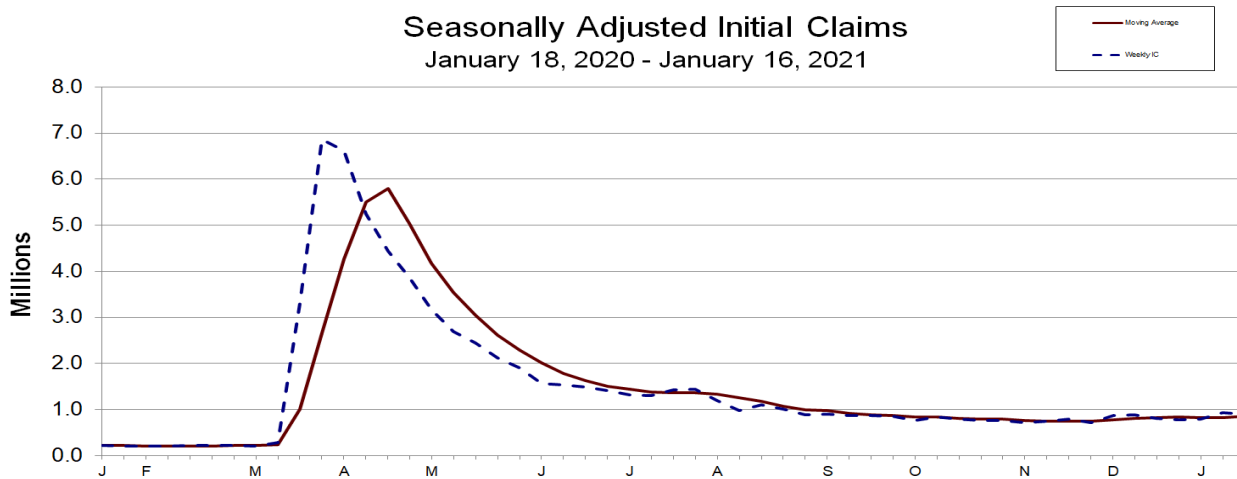
UNEMPLOYMENT INSURANCE WEEKLY CLAIMS

SEASONALLY ADJUSTED DATA

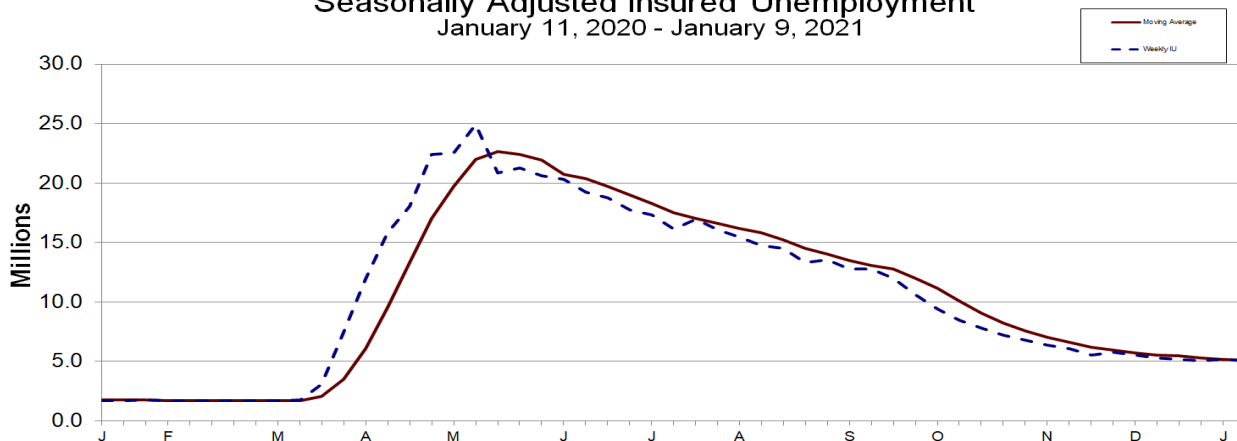
In the week ending January 16, the advance figure for seasonally adjusted **initial claims** was 900,000, a decrease of 26,000 from the previous week's revised level. The previous week's level was revised down by 39,000 from 965,000 to 926,000. The 4-week moving average was 848,000, an increase of 23,500 from the previous week's revised average. The previous week's average was revised down by 9,750 from 834,250 to 824,500.

The advance seasonally adjusted **insured unemployment rate** was 3.6 percent for the week ending January 9, unchanged from the previous week's revised rate. The previous week's rate was revised down by 0.1 from 3.7 to 3.6 percent. The advance number for seasonally adjusted **insured unemployment** during the week ending January 9 was 5,054,000, a decrease of 127,000 from the previous week's revised level. The previous week's level was revised down by 90,000 from 5,271,000 to 5,181,000. The 4-week moving average was 5,126,250, a decrease of 67,000 from the previous week's revised average. The previous week's average was revised down by 22,500 from 5,215,750 to 5,193,250.

Seasonally Adjusted Initial Claims
January 18, 2020 - January 16, 2021



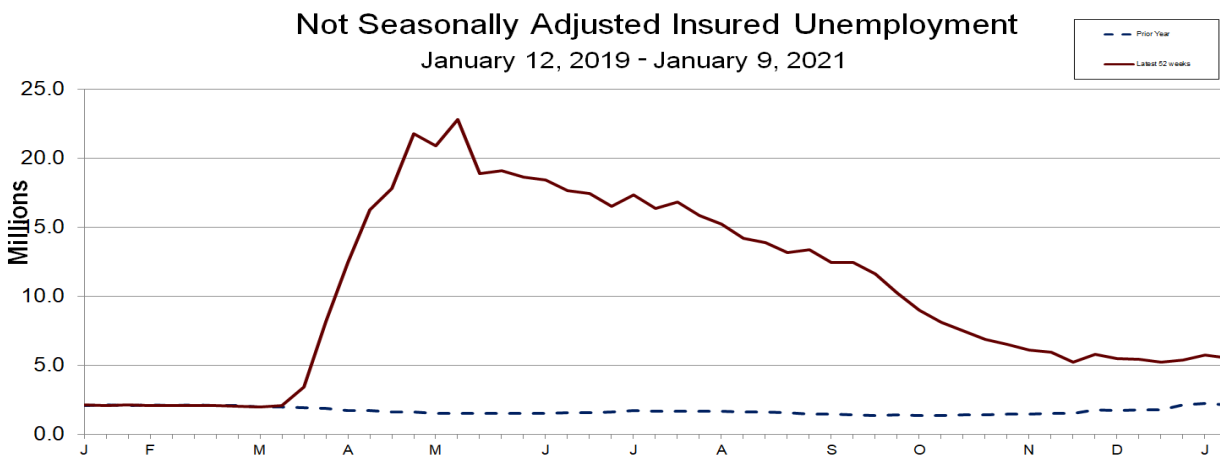
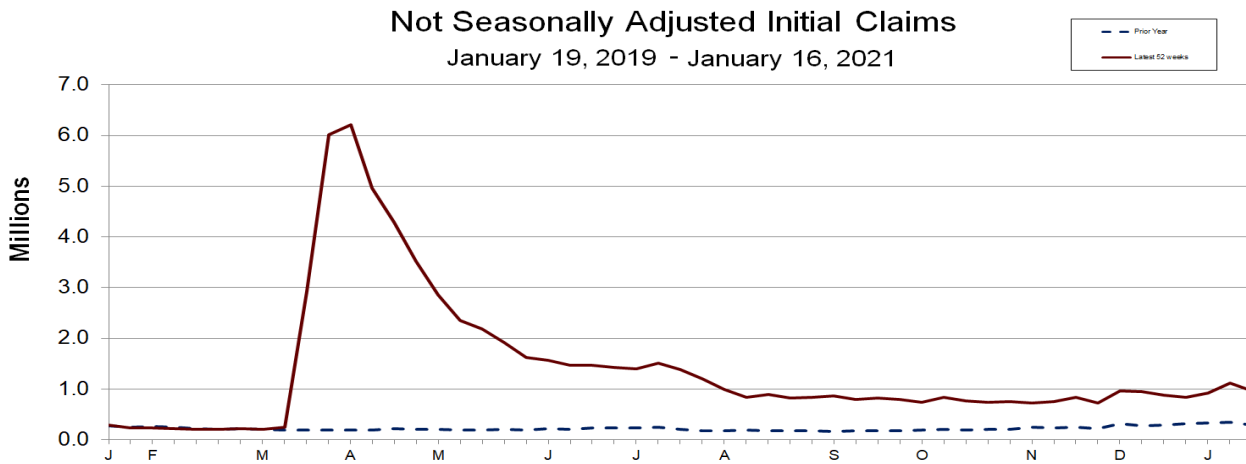
Seasonally Adjusted Insured Unemployment
January 11, 2020 - January 9, 2021



UNADJUSTED DATA

The advance number of actual initial claims under state programs, unadjusted, totaled 960,668 in the week ending January 16, a decrease of 151,303 (or -13.6 percent) from the previous week. The seasonal factors had expected a decrease of 124,946 (or -11.2 percent) from the previous week. There were 282,088 initial claims in the comparable week in 2020. In addition, for the week ending January 16, 47 states reported 423,734 initial claims for Pandemic Unemployment Assistance.

The advance unadjusted insured unemployment rate was 3.9 percent during the week ending January 9, a decrease of 0.2 percentage point from the prior week. The advance unadjusted level of insured unemployment in state programs totaled 5,563,048, a decrease of 203,750 (or -3.5 percent) from the preceding week. The seasonal factors had expected a decrease of 76,466 (or -1.3 percent) from the previous week. A year earlier the rate was 1.5 percent and the volume was 2,141,587.



The total number of continued weeks claimed for benefits in all programs for the week ending January 2 was 15,994,519, a decrease of 2,412,508 from the previous week. There were 2,278,239 weekly claims filed for benefits in all programs in the comparable week in 2020.

During the week ending January 2, Extended Benefits were available in the following 20 states: Alaska, California, Connecticut, District of Columbia, Georgia, Hawaii, Illinois, Louisiana, Massachusetts, Michigan, New Jersey, New Mexico, New York, North Carolina, Oregon, Pennsylvania, Puerto Rico, Rhode Island, the Virgin Islands, and Washington.

Initial claims for UI benefits filed by former Federal civilian employees totaled 3,139 in the week ending January 9, an increase of 1,131 from the prior week. There were 1,249 initial claims filed by newly discharged veterans, an increase of 189 from the preceding week.

There were 18,620 continued weeks claimed filed by former Federal civilian employees the week ending January 2, an increase of 1,747 from the previous week. Newly discharged veterans claiming benefits totaled 9,702, an increase of 202 from the prior week.

During the week ending January 2, 49 states reported 5,707,397 continued weekly claims for Pandemic Unemployment Assistance benefits and 51 states reported 3,026,952 continued claims for Pandemic Emergency Unemployment Compensation benefits.

The highest insured unemployment rates in the week ending January 2 were in Kansas (7.5), Pennsylvania (7.2), Alaska (6.6), Illinois (6.1), Nevada (5.9), California (5.8), Puerto Rico (5.8), New Mexico (5.7), Colorado (5.6), and Minnesota (5.5).

The largest increases in initial claims for the week ending January 9 were in Illinois (+49,557), Kansas (+22,128), California (+21,636), Texas (+18,732), and New York (+16,204), while the largest decreases were in Colorado (-10,996), Michigan (-5,802), Kentucky (-5,542), Louisiana (-4,868), and Washington (-2,573).

UNEMPLOYMENT INSURANCE DATA FOR REGULAR STATE PROGRAMS

WEEK ENDING	January 16	January 9	Change	January 2	Prior Year¹
Initial Claims (SA)	900,000	926,000	-26,000	784,000	220,000
Initial Claims (NSA)	960,668	1,111,971	-151,303	919,680	282,088
4-Wk Moving Average (SA)	848,000	824,500	+23,500	816,000	214,750

WEEK ENDING	January 9	January 2	Change	December 26	Prior Year¹
Insured Unemployment (SA)	5,054,000	5,181,000	-127,000	5,072,000	1,735,000
Insured Unemployment (NSA)	5,563,048	5,766,798	-203,750	5,382,137	2,141,587
4-Wk Moving Average (SA)	5,126,250	5,193,250	-67,000	5,274,750	1,749,250
Insured Unemployment Rate (SA) ²	3.6%	3.6%	0.0	3.5%	1.2%
Insured Unemployment Rate (NSA) ²	3.9%	4.1%	-0.2	3.7%	1.5%

INITIAL CLAIMS FILED IN FEDERAL PROGRAMS (UNADJUSTED)

WEEK ENDING	January 16	January 9	Change	January 2
Pandemic Unemployment Assistance	423,734	284,886	+138,848	161,159

WEEK ENDING	January 9	January 2	Change	Prior Year¹
Federal Employees (UCFE)	3,139	2,008	+1,131	1,671
Newly Discharged Veterans (UCX)	1,249	1,060	+189	581

CONTINUED WEEKS CLAIMED FILED FOR UI BENEFITS IN ALL PROGRAMS (UNADJUSTED)

WEEK ENDING	January 2	December 26	Change	Prior Year¹
Regular State	5,733,436	5,347,440	+385,996	2,245,719
Federal Employees	18,620	16,873	+1,747	11,713
Newly Discharged Veterans	9,702	9,500	+202	5,662
Pandemic Unemployment Assistance ³	5,707,397	7,442,888	-1,735,491	NA
Pandemic Emergency UC ⁴	3,026,952	4,166,261	-1,139,309	NA
Extended Benefits ⁵	1,409,375	1,326,792	+82,583	0
State Additional Benefits ⁶	2,539	2,560	-21	5,043
STC / Workshare ⁷	86,498	94,713	-8,215	10,102
TOTAL⁸	15,994,519	18,407,027	-2,412,508	2,278,239

FOOTNOTES

SA - Seasonally Adjusted Data, NSA - Not Seasonally Adjusted Data Continued weeks claimed represent all weeks of benefits claimed during the week being reported, and do not represent weeks claimed by unique individuals.

1. Prior year is comparable to most recent data.
2. Most recent week used covered employment of 142,133,208 as denominator.
3. Information on the Pandemic Unemployment Assistance (PUA) program can be found in UIPL 16-20: [PUA Program information](#)
4. Information on the Pandemic Emergency Unemployment Compensation (PEUC) program can be found in Unemployment Insurance Program Letter (UIPL) 17-20: [PEUC Program information](#)
5. Information on the EB program can be found here: [EB Program information](#)
6. Some states maintain additional benefit programs for those claimants who exhaust regular benefits, and when applicable, extended benefits. Information on states that participate, and the extent of benefits paid, can be found starting on page 4-4 of this link: [Extensions and Special Programs PDF](#)
7. Information on STC/Worksharing can be found starting on page 4-8 of the following link: [Extensions and Special Programs PDF](#)
8. Totals include PUA Unemployment for the appropriate corresponding week.

Advance State Claims - Not Seasonally Adjusted

STATE	Initial Claims Filed During Week Ended January 16			Insured Unemployment For Week Ended January 9		
	Advance	Prior Wk	Change	Advance	Prior Wk	Change
Alabama	11,033	14,084	-3,051	13,188	16,681	-3,493
Alaska	5,144	3,900	1,244	19,104	19,702	-598
Arizona	27,656	12,309	15,347	80,295	76,818	3,477
Arkansas	4,079	6,371	-2,292	20,418	24,752	-4,334
California**	123,970	182,625	-58,655	914,351	973,908	-59,557
Colorado	13,728	14,238	-510	93,383	147,288	-53,905
Connecticut	10,567	10,286	281	83,858	84,875	-1,017
Delaware	2,804	3,682	-878	15,167	15,782	-615
District of Columbia	1,600	1,876	-276	24,903	26,146	-1,243
Florida*	26,559	30,583	-4,024	169,837	174,544	-4,707
Georgia	32,351	37,039	-4,688	166,736	185,587	-18,851
Hawaii	4,477	5,058	-581	28,583	28,602	-19
Idaho	3,362	4,685	-1,323	13,189	14,390	-1,201
Illinois	108,892	94,944	13,948	325,393	349,645	-24,252
Indiana	13,455	17,724	-4,269	91,487	93,981	-2,494
Iowa	6,785	7,366	-581	46,694	48,553	-1,859
Kansas	63,513	66,323	-2,810	135,951	100,116	35,835
Kentucky	11,752	11,399	353	41,990	44,207	-2,217
Louisiana	15,424	20,497	-5,073	59,881	85,773	-25,892
Maine	3,236	3,753	-517	16,815	17,147	-332
Maryland	28,923	23,084	5,839	69,551	75,237	-5,686
Massachusetts	25,512	31,932	-6,420	165,405	175,630	-10,225
Michigan	19,253	24,654	-5,401	218,140	195,176	22,964
Minnesota	13,680	17,301	-3,621	143,829	152,224	-8,395
Mississippi	7,710	9,872	-2,162	29,173	32,576	-3,403
Missouri	11,427	16,698	-5,271	54,838	53,743	1,095
Montana	2,209	3,094	-885	17,939	18,422	-483
Nebraska	2,784	5,214	-2,430	15,809	14,791	1,018
Nevada	11,110	9,511	1,599	78,541	78,793	-252
New Hampshire	3,891	3,859	32	28,871	27,166	1,705
New Jersey	14,046	21,836	-7,790	143,660	156,368	-12,708
New Mexico	6,377	11,514	-5,137	43,260	44,857	-1,597
New York	60,909	73,121	-12,212	450,394	458,791	-8,397
North Carolina	12,671	15,722	-3,051	61,149	66,370	-5,221
North Dakota	1,991	1,946	45	10,206	8,579	1,627
Ohio	41,316	37,335	3,981	206,154	211,822	-5,668
Oklahoma	5,948	7,017	-1,069	34,591	41,475	-6,884
Oregon	10,092	12,896	-2,804	106,129	99,607	6,522
Pennsylvania	31,786	41,424	-9,638	351,229	358,826	-7,597
Puerto Rico	1,184	1,935	-751	53,826	48,595	5,231
Rhode Island	10,591	7,799	2,792	23,716	23,015	701
South Carolina	6,683	8,048	-1,365	47,907	51,045	-3,138
South Dakota	649	985	-336	5,662	6,199	-537
Tennessee	18,237	21,954	-3,717	50,299	58,945	-8,646
Texas	50,831	64,721	-13,890	368,167	357,646	10,521
Utah	3,386	3,825	-439	16,306	16,459	-153
Vermont	1,654	1,830	-176	13,571	12,506	1,065
Virgin Islands	13	49	-36	2,548	1,836	712
Virginia**	24,341	28,227	-3,886	65,584	63,687	1,897
Washington	20,093	28,278	-8,185	188,961	182,287	6,674
West Virginia	3,102	3,653	-551	23,810	22,836	974
Wisconsin	16,965	22,580	-5,615	107,132	117,324	-10,192
Wyoming **	917	1,315	-398	5,468	5,468	0
US Total	960,668	1,111,971	-151,303	5,563,048	5,766,798	-203,750

Note: Advance claims are not directly comparable to claims reported in prior weeks. Advance claims are reported by the state liable for paying the unemployment compensation, whereas previous weeks reported claims reflect claimants by state of residence. In addition, claims reported as "workshare equivalent" in the previous week are added to the advance claims as a proxy for the current week's "workshare equivalent" activity.

*Denotes OUI estimate.

**Denotes state estimate.

Seasonally Adjusted US Weekly UI Claims (in thousands)

Week Ending	Initial Claims	Change from		Insured Unemployment	Change from		IUR
		Prior Week	4-Week Average		Prior Week	4-Week Average	
January 11, 2020	207	-5	214.25	1,735	-24	1,749.25	1.2
January 18, 2020	220	13	214.75	1,704	-31	1,743.25	1.2
January 25, 2020	212	-8	212.75	1,753	49	1,737.75	1.2
February 1, 2020	201	-11	210.00	1,678	-75	1,717.50	1.2
February 8, 2020	204	3	209.25	1,729	51	1,716.00	1.2
February 15, 2020	215	11	208.00	1,693	-36	1,713.25	1.2
February 22, 2020	220	5	210.00	1,720	27	1,705.00	1.2
February 29, 2020	217	-3	214.00	1,699	-21	1,710.25	1.2
March 7, 2020	211	-6	215.75	1,702	3	1,703.50	1.2
March 14, 2020	282	71	232.50	1,784	82	1,726.25	1.2
March 21, 2020	3,307	3,025	1,004.25	3,059	1,275	2,061.00	2.1
March 28, 2020	6,867	3,560	2,666.75	7,446	4,387	3,497.75	5.1
April 4, 2020	6,615	-252	4,267.75	11,914	4,468	6,050.75	8.2
April 11, 2020	5,237	-1,378	5,506.50	15,819	3,905	9,559.50	10.9
April 18, 2020	4,442	-795	5,790.25	18,011	2,192	13,297.50	12.4
April 25, 2020	3,867	-575	5,040.25	22,377	4,366	17,030.25	15.4
May 2, 2020	3,176	-691	4,180.50	22,548	171	19,688.75	15.5
May 9, 2020	2,687	-489	3,543.00	24,912	2,364	21,962.00	17.1
May 16, 2020	2,446	-241	3,044.00	20,841	-4,071	22,669.50	14.3
May 23, 2020	2,123	-323	2,608.00	21,268	427	22,392.25	14.6
May 30, 2020	1,897	-226	2,288.25	20,606	-662	21,906.75	14.1
June 6, 2020	1,566	-331	2,008.00	20,289	-317	20,751.00	13.9
June 13, 2020	1,540	-26	1,781.50	19,231	-1,058	20,348.50	13.2
June 20, 2020	1,482	-58	1,621.25	18,760	-471	19,721.50	12.9
June 27, 2020	1,408	-74	1,499.00	17,760	-1,000	19,010.00	12.2
July 4, 2020	1,310	-98	1,435.00	17,304	-456	18,263.75	11.8
July 11, 2020	1,308	-2	1,377.00	16,151	-1,153	17,493.75	11.1
July 18, 2020	1,422	114	1,362.00	16,951	800	17,041.50	11.6
July 25, 2020	1,435	13	1,368.75	16,090	-861	16,624.00	11.0
August 1, 2020	1,191	-244	1,339.00	15,480	-610	16,168.00	10.6
August 8, 2020	971	-220	1,254.75	14,759	-721	15,820.00	10.1
August 15, 2020	1,104	133	1,175.25	14,492	-267	15,205.25	9.9
August 22, 2020	1,011	-93	1,069.25	13,292	-1,200	14,505.75	9.1
August 29, 2020	884	-127	992.50	13,544	252	14,021.75	9.3
September 5, 2020	893	9	973.00	12,747	-797	13,518.75	8.7
September 12, 2020	866	-27	913.50	12,747	0	13,082.50	8.7
September 19, 2020	873	7	879.00	11,979	-768	12,754.25	8.2
September 26, 2020	849	-24	870.25	10,594	-1,385	12,016.75	7.2
October 3, 2020	767	-82	838.75	9,398	-1,196	11,179.50	6.4
October 10, 2020	842	75	832.75	8,472	-926	10,110.75	5.8
October 17, 2020	797	-45	813.75	7,823	-649	9,071.75	5.3
October 24, 2020	758	-39	791.00	7,222	-601	8,228.75	4.9
October 31, 2020	757	-1	788.50	6,798	-424	7,578.75	4.6
November 7, 2020	711	-46	755.75	6,370	-428	7,053.25	4.3
November 14, 2020	748	37	743.50	6,089	-281	6,619.75	4.2
November 21, 2020	787	39	750.75	5,527	-562	6,196.00	3.8
November 28, 2020	716	-71	740.50	5,781	254	5,941.75	3.9
December 5, 2020	862	146	778.25	5,507	-274	5,726.00	3.8
December 12, 2020	892	30	814.25	5,322	-185	5,534.25	3.6
December 19, 2020	806	-86	819.00	5,198	-124	5,452.00	3.5
December 26, 2020	782	-24	835.50	5,072	-126	5,274.75	3.5
January 2, 2021	784	2	816.00	5,181	109	5,193.25	3.6
January 9, 2021	926	142	824.50	5,054	-127	5,126.25	3.6
January 16, 2021	900	-26	848.00				

Pandemic Unemployment Assistance Claims - Not Seasonally Adjusted

STATE	PUA Initial Claims Filed During Week Ended January 16			PUA Continued Claims For Week Ended Jan 2		
	Advance	Prior Wk	Change	Jan 2	Dec 26	Change
Alabama	2,045	3,848	-1,803	26,313	47,094	-20,781
Alaska	346	377	-31	9,662	10,629	-967
Arizona	3,147	4,436	-1,289	65,070	64,492	578
Arkansas	139	0	139	0	0	0
California	110,857	33,625	77,232	626,879	1,534,130	-907,251
Colorado	0	0	0	0	90,511	-90,511
Connecticut	483	678	-195	38,594	39,974	-1,380
Delaware	108	118	-10	4,893	2,898	1,995
District of Columbia	105	93	12	15,317	15,916	-599
Florida	0	37,173	-37,173	0	0	0
Georgia	2,921	2,842	79	82,382	118,778	-36,396
Hawaii	1,356	1,289	67	41,476	53,893	-12,417
Idaho	78	5	73	10,881	11,523	-642
Illinois	29,040	15,501	13,539	191,570	176,107	15,463
Indiana	0	0	0	78,051	167,888	-89,837
Iowa	1,061	1,213	-152	13,603	13,354	249
Kansas	7,574	6,951	623	31,124	20,812	10,312
Kentucky	15,338	10,881	4,457	11,373	12,912	-1,539
Louisiana	8,640	7,085	1,555	89,461	84,855	4,606
Maine	1,040	721	319	15,130	15,979	-849
Maryland	9,897	5,847	4,050	165,582	136,813	28,769
Massachusetts	6,351	4,670	1,681	257,491	332,819	-75,328
Michigan	3,725	8,404	-4,679	282,284	219,785	62,499
Minnesota	0	0	0	49,923	41,336	8,587
Mississippi	2,501	0	2,501	28,965	23,055	5,910
Missouri	4,302	2,387	1,915	46,657	64,157	-17,500
Montana	738	579	159	13,587	19,359	-5,772
Nebraska	179	230	-51	3,751	3,916	-165
Nevada	56,578	8,379	48,199	75,105	78,770	-3,665
New Hampshire	82	484	-402	7,248	10,122	-2,874
New Jersey	7,253	5,166	2,087	371,881	347,943	23,938
New Mexico	1,585	432	1,153	9,818	28,813	-18,995
New York	36,829	31,822	5,007	1,297,406	1,193,878	103,528
North Carolina	10,833	11,905	-1,072	128,453	92,731	35,722
North Dakota	364	275	89	1,129	2,783	-1,654
Ohio	0	0	0	118,101	432,627	-314,526
Oklahoma	45	21	24	6,314	0	6,314
Oregon	6,851	3,433	3,418	142,854	175,858	-33,004
Pennsylvania	42,702	33,747	8,955	345,962	502,462	-156,500
Puerto Rico	13,891	3,868	10,023	159,890	241,218	-81,328
Rhode Island	3,161	3,341	-180	42,031	41,518	513
South Carolina	5,741	7,220	-1,479	45,412	39,237	6,175
South Dakota	10	17	-7	378	1,111	-733
Tennessee	4,566	4,461	105	77,248	55,602	21,646
Texas	6,574	5,625	949	379,058	516,076	-137,018
Utah	1,436	3,010	-1,574	3,794	1,853	1,941
Vermont	84	52	32	8,429	3,338	5,091
Virgin Islands	67	61	6	0	0	0
Virginia	5,251	3,387	1,864	132,527	191,177	-58,650
Washington	4,486	5,226	-740	113,598	119,912	-6,314
West Virginia	1,676	2,208	-532	15,404	21,754	-6,350
Wisconsin	1,698	1,793	-95	25,005	20,004	5,001
Wyoming	0	0	0	333	1,116	-783
US Total	423,734	284,886	138,848	5,707,397	7,442,888	-1,735,491

Note: Information on the Pandemic Unemployment Assistance (PUA) program can be found in UIPL 16-20: [PUA Program information](#). Backdated claims may be included in these figures.

Pandemic Emergency Unemployment Compensation Continued Claims - Not Seasonally Adjusted

STATE	PEUC Claims Filed During Weeks Ended:				
	January 2	December 26	Change	December 19	December 12
Alabama	53,753	17,813	35,940	18,542	21,739
Alaska	6,697	6,704	-7	7,088	7,921
Arizona	66,104	59,508	6,596	57,448	58,169
Arkansas	2,410	9,395	-6,985	9,378	10,016
California	304,888	1,299,995	-995,107	1,283,061	1,356,260
Colorado	36,725	70,781	-34,056	70,658	76,192
Connecticut	58,448	52,903	5,545	62,089	66,717
Delaware	8,777	10,653	-1,876	11,975	12,783
District of Columbia	18,744	22,122	-3,378	25,260	27,746
Florida	0	0	0	0	0
Georgia	0	0	0	0	0
Hawaii	36,576	51,398	-14,822	50,204	54,777
Idaho	3,424	3,355	69	3,467	3,746
Illinois	210,534	240,206	-29,672	241,532	257,075
Indiana	28,847	51,016	-22,169	57,969	59,866
Iowa	17,596	19,643	-2,047	21,185	22,994
Kansas	1,111	14,555	-13,444	17,685	20,433
Kentucky	29,992	30,989	-997	31,780	31,092
Louisiana	56,981	49,891	7,090	50,099	54,958
Maine	9,040	9,171	-131	10,541	12,301
Maryland	67,667	48,749	18,918	63,166	62,300
Massachusetts	126,943	145,566	-18,623	162,349	176,354
Michigan	96,519	145,310	-48,791	211,685	228,982
Minnesota	121,418	77,111	44,307	80,037	86,836
Mississippi	25,898	14,806	11,092	14,374	15,403
Missouri	23,662	26,275	-2,613	26,020	29,083
Montana	6,653	5,143	1,510	5,365	5,659
Nebraska	668	3,986	-3,318	4,149	4,370
Nevada	71,599	86,101	-14,502	95,439	99,474
New Hampshire	7,160	7,758	-598	7,547	8,444
New Jersey	143,198	148,479	-5,281	170,760	184,342
New Mexico	3,972	33,676	-29,704	35,183	39,332
New York	654,902	642,002	12,900	685,857	749,327
North Carolina	115,694	101,550	14,144	108,541	115,776
North Dakota	4,478	5,047	-569	4,274	5,402
Ohio	65,764	75,860	-10,096	90,149	101,506
Oklahoma	15,012	0	15,012	22,957	23,641
Oregon	46,753	52,682	-5,929	58,268	66,699
Pennsylvania	184,422	217,528	-33,106	203,101	235,075
Puerto Rico	39,352	28,986	10,366	116,421	96,241
Rhode Island	13,096	14,449	-1,353	16,477	18,872
South Carolina	73,914	68,453	5,461	71,323	47,656
South Dakota	726	750	-24	677	855
Tennessee	35,814	32,488	3,326	33,582	34,630
Texas	17,244	10,784	6,460	16,166	19,012
Utah	6,403	6,381	22	6,700	6,951
Vermont	10,315	8,082	2,233	8,589	9,724
Virgin Islands	28	15	13	17	46
Virginia	42,882	83,541	-40,659	83,933	85,692
Washington	5,783	5,487	296	4,594	4,786
West Virginia	16,070	14,298	1,772	16,170	18,147
Wisconsin	31,936	31,797	139	34,336	40,136
Wyoming	360	3,023	-2,663	3,246	3,426
US Total	3,026,952	4,166,261	-1,139,309	4,491,413	4,778,964

Note: Information on the Pandemic Emergency Unemployment Compensation (PEUC) program can be found in Unemployment Insurance Program Letter (UIPL) 17-20: [PEUC Program information](#)

Extended Benefits (EB) Continued Claims - Not Seasonally Adjusted

STATE	EB Claims Filed During Weeks Ended:		
	January 2	December 26	Change
Alabama	0	1	-1
Alaska	1,972	1,758	214
Arizona	10,389	9,851	538
Arkansas	152	80	72
California	394,048	324,139	69,909
Colorado	89	69	20
Connecticut	15,273	14,582	691
Delaware	40	1,482	-1,442
District of Columbia	36	5	31
Florida	1,226	0	1,226
Georgia	0	0	0
Hawaii	151	25	126
Idaho	112	24	88
Illinois	84,095	54,950	29,145
Indiana	62	32	30
Iowa	88	82	6
Kansas	693	562	131
Kentucky	0	0	0
Louisiana	5,075	4,482	593
Maine	149	124	25
Maryland	677	11	666
Massachusetts	76,933	66,135	10,798
Michigan	112,017	98,851	13,166
Minnesota	945	2,155	-1,210
Mississippi	324	603	-279
Missouri	194	208	-14
Montana	71	71	0
Nebraska	4	15	-11
Nevada	47,876	34,516	13,360
New Hampshire	363	305	58
New Jersey	85,160	79,463	5,697
New Mexico	23,493	6,591	16,902
New York	205,171	208,996	-3,825
North Carolina	35,018	40,502	-5,484
North Dakota	10	3	7
Ohio	1,478	29,113	-27,635
Oklahoma	0	0	0
Oregon	22,369	21,692	677
Pennsylvania	27,819	51,290	-23,471
Puerto Rico	1,868	2,223	-355
Rhode Island	11,250	9,994	1,256
South Carolina	492	597	-105
South Dakota	0	0	0
Tennessee	19	114	-95
Texas	183,601	208,832	-25,231
Utah	0	0	0
Vermont	98	473	-375
Virgin Islands	0	0	0
Virginia	1,481	1,112	369
Washington	54,822	48,279	6,543
West Virginia	22	16	6
Wisconsin	2,266	2,382	-116
Wyoming	34	2	32
US Total	1,409,525	1,326,792	82,733

Note: Information on the EB program can be found here: [EB Program information](#)

INITIAL CLAIMS FILED DURING WEEK ENDED
JANUARY 9

INSURED UNEMPLOYMENT FOR WEEK ENDED
JANUARY 2

STATE NAME	STATE	CHANGE FROM				STATE (%) ²	CHANGE FROM				ALL PROGRAMS EXCLUDING RAILROAD RETIREMENT	
		LAST WEEK	YEAR AGO	UCFE ¹	UCX ¹		LAST WEEK	YEAR AGO	UCFE ¹	UCX ¹		
Alabama	14,084	3,098	10,455	75	14	16,681	0.9	-6,960	-4,462	78	36	16,795
Alaska	3,900	953	2,529	18	1	19,702	6.6	-362	10,392	258	33	19,993
Arizona	12,309	4,317	7,655	18	3	76,818	2.7	4,917	58,559	325	204	77,347
Arkansas	6,371	1,971	3,878	8	0	24,752	2.1	1,746	9,216	160	26	24,938
California	182,625	21,636	130,632	575	125	973,908	5.8	97,293	617,532	3,819	1,986	979,713
Colorado	14,238	-10,996	11,237	91	9	147,288	5.6	37,253	125,796	410	320	148,018
Connecticut	10,286	976	4,300	22	7	84,875	5.3	6,302	37,335	251	60	85,186
Delaware	3,682	1,004	2,575	5	4	15,782	3.5	2,220	8,699	42	22	15,846
District of Columbia	1,876	226	1,170	96	1	26,146	4.6	-604	19,044	443	7	26,596
Florida	30,583	5,886	23,721	163	97	174,544	2.1	44,969	139,520	534	369	175,447
Georgia	37,039	5,581	19,077	121	43	185,587	4.3	13,573	138,105	561	366	186,514
Hawaii	5,058	1,074	3,232	20	17	28,602	4.9	-663	20,753	257	138	28,997
Idaho	4,685	73	2,554	24	6	14,390	2.0	1,052	2,907	297	7	14,694
Illinois	94,944	49,557	82,241	30	8	349,645	6.1	19,142	213,122	658	185	350,488
Indiana	17,724	2,928	12,834	35	8	93,981	3.2	13,478	72,457	178	93	94,252
Iowa	7,366	-489	2,530	17	4	48,553	3.2	5,388	14,013	104	58	48,715
Kansas	66,323	22,128	64,183	3	1	100,116	7.5	11,889	88,685	71	39	100,226
Kentucky	11,399	-5,542	7,431	5	3	44,207	2.4	3,770	19,083	48	94	44,349
Louisiana	20,497	-4,868	17,976	30	16	85,773	4.7	21,369	69,816	166	31	85,970
Maine	3,753	-187	2,192	5	2	17,147	2.9	1,479	9,315	62	10	17,219
Maryland	23,084	11,543	18,457	34	17	75,237	3.1	-4,071	43,945	263	53	75,553
Massachusetts	31,932	5,562	23,148	60	23	175,630	4.9	1,847	96,109	427	125	176,182
Michigan	24,654	-5,802	10,409	61	10	195,176	4.8	-9,956	105,416	329	63	195,568
Minnesota	17,301	-181	11,368	20	11	152,224	5.5	3,789	85,847	229	98	152,551
Mississippi	9,872	3,512	8,357	8	2	32,576	3.0	2,391	23,040	139	26	32,741
Missouri	16,698	35	5,785	5	3	53,743	2.0	3,917	23,603	103	28	53,874
Montana	3,094	-559	1,339	129	5	18,422	4.1	592	6,666	526	13	18,961
Nebraska	5,214	1,571	4,043	13	1	14,791	1.5	248	9,097	21	12	14,824
Nevada	9,511	1,050	6,719	19	3	78,793	5.9	1,410	58,970	243	106	79,142
New Hampshire	3,859	-1,073	3,137	25	5	27,166	4.3	2,829	22,591	54	8	27,228
New Jersey	21,836	848	8,367	61	19	156,368	4.0	15,158	35,907	378	446	157,192
New Mexico	11,514	7,433	10,320	23	4	44,857	5.7	-2,644	34,547	374	89	45,320
New York	73,121	16,204	49,807	26	33	458,791	5.1	55,618	274,508	399	445	459,635
North Carolina	15,722	2,391	11,094	84	67	66,370	1.5	-22,860	45,131	260	269	66,899
North Dakota	1,946	504	416	3	2	8,579	2.1	305	2,408	17	8	8,604
Ohio	37,335	7,609	27,378	33	28	211,822	3.9	40,795	133,431	313	257	212,392
Oklahoma	7,017	958	4,983	33	8	41,475	2.6	-682	22,088	120	88	41,683
Oregon	12,896	86	6,681	180	18	99,607	5.3	11,619	63,568	935	174	100,716
Pennsylvania	41,424	2,912	15,068	263	41	358,826	7.2	-22,884	194,944	1,388	439	360,653
Puerto Rico	1,935	696	1,099	6	7	48,595	5.8	12,525	32,849	173	23	48,791
Rhode Island	7,799	2,187	5,982	6	0	23,015	5.1	2,095	10,716	95	20	23,130
South Carolina	8,048	-730	3,419	27	16	51,045	2.5	4,412	29,458	39	96	51,180
South Dakota	985	382	517	13	3	6,199	1.5	1,453	3,229	65	2	6,266
Tennessee	21,954	5,023	18,243	43	20	58,945	1.8	3,130	36,547	57	41	59,043
Texas	64,721	18,732	42,819	347	483	357,646	2.9	-6,264	216,878	1,244	1,702	360,592
Utah	3,825	850	1,991	108	5	16,459	1.1	774	4,672	261	21	16,741
Vermont	1,830	30	1,181	1	0	12,506	4.1	312	6,897	19	2	12,527
Virgin Islands	49	22	25	0	0	1,836	4.9	-148	1,302	0	6	1,842
Virginia	28,227	8,697	24,584	23	6	63,687	1.7	99	40,110	321	229	64,237
Washington	28,278	-2,573	19,209	73	31	182,287	5.5	-7,720	112,073	626	597	183,510
West Virginia	3,653	1,225	1,015	5	0	22,836	3.6	2,375	4,810	146	42	23,024
Wisconsin	22,580	3,392	14,325	25	9	117,324	4.2	16,541	64,019	247	85	117,656
Wyoming	1,315	429	486	21	0	5,468	2.1	405	2,166	87	5	5,560
Totals	1,111,971	192,291	774,173	3,139	1,249	5,766,798	4.1	384,661	3,517,429	18,620	9,702	5,795,120

Figures appearing in columns showing over-the-week changes reflect all revisions in data for prior week submitted by state agencies.

1. The Unemployment Compensation program for Federal Employees (UCFE) and the Unemployment Compensation for Ex-servicemembers (UCX) exclude claims filed jointly under other programs to avoid duplication.
2. Rate is not seasonally adjusted. The source of U.S. total covered employment is BLS.

UNADJUSTED INITIAL CLAIMS FOR WEEK ENDED JANUARY 9, 2021

STATES WITH AN INCREASE OF MORE THAN 1,000

State	Change	State Supplied Comment
IL	+49,557	Layoffs in other services, manufacturing, and construction industries.
KS	+22,128	No comment.
CA	+21,636	Layoffs in the agriculture, forestry, fishing and hunting industry.
TX	+18,732	Layoffs in the manufacturing, professional, scientific, and technical services, wholesale trade, public administration, and accommodation and food services industries.
NY	+16,204	Layoffs in the transportation and warehousing, retail trade, and health care and social assistance industries.
MD	+11,543	No comment.
VA	+8,697	Layoffs in the accommodation and food services industry.
OH	+7,609	No comment.
NM	+7,433	No comment.
FL	+5,886	No comment.
GA	+5,581	Layoffs in the health care and social assistance, administrative and support and waste management and remediation services, manufacturing, and construction industries.
MA	+5,562	No comment.
TN	+5,023	Layoffs in the accommodation and food services, administrative and support and waste management and remediation services, retail trade, and transportation and warehousing industries.
AZ	+4,317	No comment.
MS	+3,512	No comment.
WI	+3,392	No comment.
AL	+3,098	Layoffs in the retail trade, accommodation and food services, transportation and warehousing, health care and social assistance, manufacturing, construction, finance and insurance, wholesale trade, and administrative and support and waste management and remediation services industries.
IN	+2,928	No comment.
PA	+2,912	Layoffs in the transportation and warehousing, construction, administrative and support and waste management and remediation services, and professional, scientific, and technical services industries.
NC	+2,391	Layoffs in the manufacturing and construction industries.
RI	+2,187	Layoffs in the health care and social assistance, educational services, manufacturing, construction, and administrative and support and waste management and remediation services industries.
AR	+1,971	No comment.
NE	+1,571	No comment.
WV	+1,225	No comment.
HI	+1,074	No comment.
NV	+1,050	No comment.
DE	+1,004	No comment.

STATES WITH A DECREASE OF MORE THAN 1,000

State	Change	State Supplied Comment
CO	-10,996	No comment.
MI	-5,802	Fewer layoffs in the manufacturing industry.
KY	-5,542	No comment.
WA	-2,573	No comment.
NH	-1,073	No comment.

TECHNICAL NOTES

This news release presents the weekly unemployment insurance (UI) claims reported by each state's unemployment insurance program offices. These claims may be used for monitoring workload volume, assessing state program operations and for assessing labor market conditions. States initially report claims directly taken by the state liable for the benefit payments, regardless of where the claimant who filed the claim resided. These are the basis for the advance initial claims and continued claims reported each week. These data come from ETA 538, Advance Weekly Initial and Continued Claims Report. The following week initial claims and continued claims are revised based on a second reporting by states that reflect the claimants by state of residence. These data come from the ETA 539, Weekly Claims and Extended Benefits Trigger Data Report.

A. Initial Claims

An initial claim is a claim filed by an unemployed individual after a separation from an employer. The claimant requests a determination of basic eligibility for the UI program. When an initial claim is filed with a state, certain programmatic activities take place and these result in activity counts including the count of initial claims. The count of U.S. initial claims for unemployment insurance is a leading economic indicator because it is an indication of emerging labor market conditions in the country. However, these are weekly administrative data which are difficult to seasonally adjust, making the series subject to some volatility.

B. Continued Weeks Claimed

A person who has already filed an initial claim and who has experienced a week of unemployment then files a continued claim to claim benefits for that week of unemployment. On a weekly basis, continued claims are also referred to as insured unemployment, as continued claims reflect a good approximation of the current number of insured unemployed workers filing for UI benefits. The count of U.S. continued weeks claimed is also a good indicator of labor market conditions. While continued claims are not a leading indicator (they roughly coincide with economic cycles at their peaks and lag at cycle troughs), they provide confirming evidence of the direction of the U.S. economy.

C. Seasonal Adjustments and Annual Revisions

Over the course of a year, the weekly changes in the levels of initial claims and continued claims undergo regularly occurring fluctuations. These fluctuations may result from seasonal changes in weather, major holidays, the opening and closing of schools, or other similar events. Because these seasonal events follow a more or less regular pattern each year, their influence on the level of a series can be tempered by adjusting for regular seasonal variation. These adjustments make trend and cycle developments easier to spot. At the beginning of each calendar year, the Bureau of Labor Statistics provides the Employment and Training Administration (ETA) with a set of seasonal factors to apply to the unadjusted data during that year. Concurrent with the implementation and release of the new seasonal factors, ETA incorporates revisions to the UI claims historical series caused by updates to the unadjusted data.

[Weekly Claims Archives](#)

[Weekly Claims Data](#)

U.S. Department of Labor news materials are accessible at <http://www.dol.gov>. The Department's [Reasonable Accommodation Resource Center](#) converts Departmental information and documents into alternative formats, which include Braille and large print. For alternative format requests, please contact the Department at (202) 693-7828 (voice) or (800) 877-8339 (federal relay).

U.S. Department of Labor
Employment and Training Administration
Washington, D.C. 20210
Release Number: USDL 21-108-NAT

Program Contacts:
Thomas Stengle: (202) 693-2991
Media Contact: (202) 693-4676