

2016



# CLCCG ANNUAL REPORT

U.S. Representative Eliot Engel

U.S. Department of Labor

Government of Côte d'Ivoire

Government of Ghana

International Chocolate and Cocoa Industry



ACRONYMS.....	ii
INTRODUCTION.....	1
REPORT FOR THE GOVERNMENT OF CÔTE D’IVOIRE.....	7
REPORT FOR THE GOVERNMENT OF GHANA.....	21
REPORT FOR THE U.S. DEPARTMENT OF LABOR.....	24
REPORT FROM WORLD COCOA FOUNDATION ON COCOAACTION.....	28
APPENDIX 1: DECLARATION.....	42
APPENDIX 2: FRAMEWORK.....	43
APPENDIX 3: BY-LAWS.....	50

## ACRONYMS

CAP	Community Action Plan
CCP	Toward Child Labor Free Cocoa Growing Communities in Côte d'Ivoire and Ghana through an Integrated Area Base Approach (Cocoa Communities Project)
CIM	Interministerial Committee to Combat Trafficking, Exploitation and Child Labor/le Comité Interministériel de Lutte Contre la Traite, l'Exploitation et le Travail des Enfants
CLCCG	Child Labor Cocoa Coordinating Group
CLMS	Child Labor Monitoring System
CLMRS	Child Labor Monitoring and Remediation System
CNS	National Committee to Combat Trafficking, Exploitation and Child Labor/ le Comité National de Lutte Contre la Traite, l'Exploitation et le Travail des Enfants
COCOBOD	Ghana Cocoa Board
CPC	Child Protection Committee
DDECI	Rights of Children in Côte d'Ivoire/Droits des Enfants en Côte d'Ivoire
Declaration	Declaration of Joint Action to Support Implementation of the Harkin-Engel Protocol
ECLIC	Eliminating Child Labor in Cocoa
FCFA	Financial Community of Africa Franc/Franc Communauté Financière Africaine
Framework	Framework of Action to Support the Implementation of the Harkin-Engel Protocol
GCLMS	Ghana Child Labor Monitoring System
Harkin-Engel Protocol	Protocol for the Growing and Processing of Cocoa Beans and their Derivative Products
ICI	International Cocoa Initiative
ILAB	Bureau of International Labor Affairs
ILO/BIT	International Labor Organization/Bureau International du Travail
ILO-IPEC	International Labor Organization, International Program on the Elimination of Child Labor
Industry	International Chocolate and Cocoa Industry
JNCC	National Cocoa and Chocolate Day/Journées Nationales du Cacao et du Chocolat
KPI	Key Performance Indicators
M&E	Monitoring and Evaluation
MOCA	Mobilizing Community Action and Promoting Opportunities for Youth in Ghana's Cocoa Growing Communities
MOU	Memorandum of Understanding
NGO/ONG	Non-Governmental Organization/Organisation Non Gouvernementale
N.O.R.C.	Formerly known as the <i>National Opinion Research Center</i> at the University of Chicago
NPA	National Plan of Action for the Elimination of the Worst Forms of Child Labor
NPECLC	Ghana's National Programme for the Elimination of the Worst Forms of Child Labour in Cocoa
NSC	National Steering Committee

## ACRONYMS

ONUDC	United Nations Office on Drugs and Crime/ l'Office des Nations Unies Contre la Drogue et le Crime
OSH	Occupational Safety and Health
PPP	Combatting Child Labour in Cocoa Growing Communities in Ghana and Côte d'Ivoire, a public-private partnership between ILO-IPEC and Industry
SDG/ODD	Sustainable Development Goals/Objectifs de Développement Durable
SDLTEDJ	The Police Branch Responsible for Combatting Trafficking in Children and Juvenile Delinquency/la Sous-Direction de la Police Criminelle Chargée de la Lutte Contre la Traite d'Enfants et la Délinquance Juvénile
SOSTECI	System of Observation and Monitoring of Child Labor in Côte d'Ivoire/le Système d'Observation et de Suivi du Travail des enfants en Côte d'Ivoire
TRECC	Transforming Education in Cocoa Communities/Transformer l'Education dans les Communautés Productrices de Cacao
UNICEF	United Nations International Children's Emergency Fund
USD	United States Dollar
USDOL	U.S. Department of Labor
WCF	World Cocoa Foundation
WFCL	Worst Forms of Child Labor

# INTRODUCTION

## Background

In 2001, in response to reports of child labor in West African cocoa production, representatives of the International Chocolate and Cocoa Industry (Industry)<sup>1</sup> entered into a voluntary commitment entitled the “Protocol for the Growing and Processing of Cocoa Beans and their Derivative Products in a Manner that Complies with ILO Convention 182” (Harkin-Engel Protocol). The Protocol served as a call to action for public and private sector actors, leading to collaborative efforts to eliminate the worst forms of child labor in West African cocoa production. By the end of the decade there was recognition by the parties of a need for more coordinated action to address the issue.

With that realization, in September 2010, the Government of Côte d’Ivoire, the Government of Ghana, the U.S. Department of Labor (USDOL), U.S. Senator Tom Harkin, U.S. Representative Eliot Engel, and Industry agreed to work together under the *Declaration of Joint Action to Support the Implementation of the Harkin-Engel Protocol* (Declaration) and its accompanying *Framework of Action to Support the Implementation of the Harkin-Engel Protocol* (Framework)<sup>2</sup> to address the worst forms of child labor (WFCL) in cocoa growing areas of Côte d’Ivoire and Ghana. Signatories to the Declaration committed to the goal of reducing the WFCL in the cocoa sectors of the two countries by 70 percent in aggregate by the year 2020.

As stated in the Framework, this objective is to be achieved through joint efforts in the following areas:

- Provision of education and vocational training services to children as a means to remove children from, or prevent them from entering into the WFCL;
- Application of protective measures to remove workplace hazards from cocoa farming to allow children of legal working age to work under safe conditions;
- Promotion of livelihood services for the households of children working in the cocoa sector;
- Establishment and implementation of community-based child labor monitoring systems (CLMS) in cocoa growing areas; and
- Conducting of national representative child labor surveys at least every five years.

The partners have joined together to release this 2016 report to inform interested stakeholders and the broader public of the actions taken as part of this endeavor, and the progress made during the past year towards achievement of the goals of the Declaration and Framework. In particular, this report highlights notable efforts being undertaken by the partners in one or more of the five bulleted areas above, including the implementation of nationally-representative child labor surveys in the cocoa growing areas of both countries. Additionally, this report highlights a number of key efforts by the partners, which go beyond the original commitments of the Declaration and accompanying Framework, and which are intended to contribute to a reduction in the WFCL in cocoa growing areas of Côte d’Ivoire and Ghana.

---

<sup>1</sup> The Chocolate Manufacturers Association and the World Cocoa Foundation signed the Protocol. ADM, Barry Callebaut, Cargill, Ferrero, The Hershey Company, Kraft Foods, Mars Incorporated, and Nestlé formed the Cocoa Global Issues Group to implement activities under the Protocol.

<sup>2</sup> The Framework established the CLCCG to function as a steering committee and a working task force. With Senator Harkin’s retirement, the CLCCG is now comprised of representatives of USDOL, the Government of Côte d’Ivoire, the Government of Ghana, Industry, and U.S. Representative Eliot Engel. The role of the CLCCG is to promote more effective coordination of action under the Framework, avoid duplication of remediation efforts, monitor and assess the progress of programs, and support the goal of a more rapid reduction in the WFCL in cocoa growing areas of Côte d’Ivoire and Ghana.

# INTRODUCTION

## OVERVIEW OF 2010-2015

Since the signing of the 2010 Declaration, the USDOL has committed nearly \$24 million to support projects aimed at preventing and reducing child labor, including research on the prevalence and nature of child labor in cocoa growing areas of Côte d'Ivoire and Ghana.

In follow-up to the signing of the Declaration, USDOL committed \$11.9 million to efforts under the Framework:

- In 2010, the Bureau of International Labor Affairs (ILAB) allocated \$10 million in funding to implement the Toward Child Labor Free Cocoa Growing Communities in Côte d'Ivoire and Ghana through an Integrated Area Base Approach (CCP) project, implemented by the International Labor Organization.
- In 2012, ILAB provided \$1.5 million to Tulane University to support the collection of nationally-representative survey data on child labor in the cocoa growing areas of Côte d'Ivoire and Ghana during the 2013-2014 harvest season. In 2014, an additional \$424,560 was provided to the project.

In 2015, USDOL increased its commitment to efforts to address child labor in West African cocoa growing areas through three new projects, totalling \$12 million in funding:

- \$3 million to N.O.R.C. (formerly known as the *National Opinion Research Center*) at the University of Chicago to evaluate and measure progress to reduce child labor in the cocoa growing areas of Côte d'Ivoire and Ghana.
- \$4.5 million to the International Cocoa Initiative (ICI) to implement the Eliminating Child Labor in Cocoa (ECLIC) project in Côte d'Ivoire, which is targeting 5,450 vulnerable children engaged in or at risk of child labor for education services and 1,500 vulnerable households for sustainable livelihoods promotion.
- \$4.5 million to Winrock International to implement the Mobilizing Community Action and Promoting Opportunities for Youth in Ghana's Cocoa Growing Communities (MOCA) project, which is targeting 3,200 youth ages 15-17 for vocational/non-formal education services and 1,600 adult female household members for sustainable livelihoods promotion. Both the ECLIC and MOCA projects will include a specific focus on community action and empowering communities through the creation of Community Action Plans (CAPs) and CAP committees.

Between 2010 and 2015, Industry committed a total of \$10.1 million to Framework activities, including providing funding to the public-private partnership, Combating Child Labor in Cocoa Growing Communities in Ghana and Côte d'Ivoire (PPP) project, implemented by the International Labor Organization (ILO). Barry Callebaut, Ferrero, Hershey, Mars, Mondelēz, and Nestle also each implemented their own projects under and in support of the Framework.

In 2014, as individual company projects were approaching their final reporting commitments under the Framework, Industry partners committed to continue to support Framework priorities through participation in the World Cocoa Foundation's (WCF) CocoaAction platform. In 2016, these Industry partners included Barry Callebaut; Blommer; Cargill; Ferrero; The Hershey Company; Mars, Incorporated; Mondelēz International; Nestlé; and Olam. By 2020, this umbrella program intends to train and deliver

## INTRODUCTION

improved planting material and fertilizer to 300,000 cocoa farmers and empower communities through education, child labor monitoring, and women's empowerment.

Overall, Industry projects an estimated \$400 million in total investments in support of the CocoaAction program for the period between 2015 and 2020. This investment supports a combination of efforts under a productivity package and a community package of services, which includes efforts to address the worst forms of child labor in cocoa growing areas. Figures are not currently available regarding the amount of CocoaAction funding going specifically to address the worst forms of child labor in cocoa growing areas.

Since signing the Declaration, the Government of Côte d'Ivoire has utilized its National Plan of Action for the Elimination of the Worst Forms of Child Labor (NPA) to implement Framework-related activities. The NPA had an overall budget of approximately \$28 million from 2012-2014, funded from a number of sources, including the Government, non- governmental organizations (NGOs), and other private donors. In 2014-2015, the Government reported a further \$17.6 million to address the worst forms of child labor in cocoa. Activities included strengthening the legislative and regulatory framework and institutional mechanisms for child protection, raising awareness, improving access to education, and the consolidation and expansion of its CLMS, the System of Observation and Monitoring of Child Labor in Côte d'Ivoire – *le Système d'Observation et de Suivi du Travail des enfants en Côte d'Ivoire* (SOSTECI). During the time period, the Government of Côte d'Ivoire also drafted the new NPA, which is being implemented between 2015 and 2017.

From 2010 to 2014, the Government of Ghana implemented the Ghana Child Labor Monitoring System (GCLMS), improved economic livelihoods for women in cocoa growing communities, assisted law enforcement, conducted community awareness raising programs, and taught farmers labor saving techniques. The Ghana Cocoa Board (COCOBOD) also committed \$1.1 million in 2015 to its Child Education Support Program and will commit funds annually towards building more schools to expand infrastructure in selected cocoa growing communities in Ghana. COCOBOD initiated two other interventions, including raising awareness and providing training on farming cocoa to youth in order to address youth unemployment and to support the Government of Ghana's efforts.

### Key Highlights of 2016

In 2016, the partners to the Declaration continued to carry out activities to help reduce the WFCL in West African cocoa growing communities:

- The Government of Côte d'Ivoire continued its work with SOSTECI, implementation of a law for free and compulsory education up to the age of 16, and efforts to improve school infrastructure in support of the NPA. In September 2016, the First Lady of Côte d'Ivoire also hosted a sub-regional meeting for Western and Northern Africa on joining forces to end child labor, forced labor, modern day slavery and human trafficking as part of efforts related to the Alliance 8.7 initiative.
- The Government of Ghana also continued a number of efforts, including a child education support program, implemented by COCOBOD. The program started construction of several new schools during the 2015/2016 school year.



## INTRODUCTION

- USDOL's three projects, implemented by ICI, Winrock and N.O.R.C., continued to take steps toward effective implementation of key activities. In 2016, the ECLIC and MOCA projects focused on start-up, prioritizing the development of their project documents, monitoring and evaluation plans, and other necessary project deliverables. During 2016, N.O.R.C. began developing and designing the tools they will use to collect intervention data, map interventions, and analyze the relative effectiveness of different types of interventions.
- Industry actions in support of CocoaAction continued to expand, with full implementation beginning in 2016. CocoaAction companies began implementing community development activities in their supply chains. Progress continued with on-the-ground projects that will lead to future reportable quantitative metrics. In addition, Industry members worked together on a broad sustainability strategy and coordinated closely with governments and other stakeholders.

In addition, the commitment of the governments Côte d'Ivoire and Ghana to the Declaration was clearly demonstrated by the personal participation of Ministers of Labor from both countries during the Child Labor Cocoa Coordinating Group (CLCCG) Annual Principals' Meeting in Washington D.C. in June 2016. During the meeting, it was also announced that the First Lady of Côte d'Ivoire, Madame Dominique Ouattara, would host the 2017 CLCCG Principals Meeting and Stakeholders Dialogue in Abidjan.

Finally, the Governments of Côte d'Ivoire and Ghana took important new steps to enhance collaboration and coordination of their efforts to address child labor issues. During the reporting period, the First Ladies of Côte d'Ivoire and Ghana signed a joint declaration to combat the worst forms of child labor and advocate for sub-regional cooperation with other First Ladies. The cooperation agreement was formally enacted by the Governments of Côte d'Ivoire and Ghana on November 3, 2016.

### Bringing Everyone to the Table

With the adoption of the Sustainable Development Goals (SDGs) by the 193 countries in September 2015, it is an opportune time for the parties to the Declaration and Framework to reflect on how our efforts fit into this new global commitment. The SDGs signified a call to action by the international community. The 17 goals that make up the SDGs also reflected the interconnected nature of efforts to address some of the world's most pressing and challenging problems, such as the persistence of poverty, hunger, disease and inequality. Moreover, with the inclusion of Goal 8—Decent Work and Economic Growth—the SDGs call for the promotion of “inclusive and sustainable economic growth, full and productive employment, and decent work for all.” Of particular relevance to the parties to the Declaration, Target 8.7 calls for “*immediate and effective measures to eradicate forced labor, end modern slavery and human trafficking and secure the prohibition and elimination of the worst forms of child labor..., and **by 2025** end child labor in all its forms.*” In recognition of the need for concerted and enhanced action to achieve Target 8.7, Alliance 8.7 was officially launched in September of 2016.

As the parties committed to the Declaration and Framework continue their efforts to prevent and reduce the WFCL in cocoa growing areas of Côte d'Ivoire and Ghana, it is important that we see these efforts within the broader framework of global efforts to eliminate child labor. The SDGs and Alliance 8.7 call upon all actors to work more effectively together to advance this goal. Efforts under the Protocol and the Declaration and its accompanying Framework of Action reflect the kind of multi-party initiative envisioned by Alliance 8.7. In keeping with the strategy espoused by the SDGs, we need to increase our efforts to seek out new partners and allies in this effort.

## INTRODUCTION

Moving forward, the parties to the Declaration and Framework must renew their commitment to take the necessary steps to meet their shared goals for preventing and reducing the WFCL in cocoa growing areas of Côte d'Ivoire and Ghana. While the Governments of Côte d'Ivoire and Ghana remain at the forefront of this fight, this past year reflect the continued commitment of the USDOL, Industry, and civil society to this effort. We encourage other stakeholders to join us in working toward our shared goal to significantly reduce the WFCL in the cocoa sectors of Côte d'Ivoire and Ghana and, by doing so, to bring positive change and new hope for children-in-need and their families. We must continue to work towards bringing new partners and allies to the table, as we look towards 2020 and beyond.

**GOVERNMENT AND INDUSTRY EFFORTS AND  
PROJECTS IMPLEMENTED BETWEEN  
DECEMBER 2015 AND DECEMBER 2016**

# REPORT FOR THE GOVERNMENT OF CÔTE D'IVOIRE

<b>Partenaires financiers</b>	CNS ; CIM ; Le Conseil du Café-Cacao, Unicef, BIT, ONUDC, l'ONG DDECI
<b>Nom de l'activité</b>	Plan d'Action National 2015-2017 de lutte contre la traite, l'exploitation et le travail des enfants
<b>Partenaires d'exécution</b>	CNS ; CIM ; Le Conseil du Café-Cacao, Unicef, BIT, ONUDC, l'ONG DDECI
<b>Fonds déboursés au cours de la période de référence</b>	9,003,673,169 FCFA, soit USD 15,006,455.28
<b>Pays cible</b>	Côte d'Ivoire
<b>Période de mise en œuvre de l'activité</b>	2015-2016

## Résumé du rapport de progrès

De **2015 à 2016**, les principaux acteurs gouvernementaux à savoir le Comité National de lutte contre la traite, l'exploitation et le travail des enfants (CNS), le Comité Interministériel de lutte contre la traite, l'exploitation et le travail des enfants (CIM) et le Conseil du Café-Cacao, en collaboration avec certains de leurs partenaires techniques et financiers notamment l'UNICEF (United Nations International Children's Emergency Fund), le Bureau International du Travail (BIT), l'Office des Nations unies contre la drogue et le crime (ONUDC) et le organisation non gouvernementale (ONG), Droits des Enfants en Côte d'Ivoire (DDECI) ont consenti des efforts financiers estimés à **9,003,673,169 FCFA** (Franc Communauté Financière Africaine), soit **USD** (United States Dollar) **15,006,455.28** pour lutter contre la traite, l'exploitation et le travail des enfants dans les zones de production de cacao en Côte d'Ivoire.

Ces activités qui ont été réalisées dans le cadre de la mise en œuvre du Plan d'Action National 2015-2017 de lutte contre la Traite, l'Exploitation et le Travail des Enfants concernent les domaines suivants

- La prévention du phénomène ;
- La protection et l'assistance aux victimes ;
- L'amélioration des conditions de vie des producteurs ;
- La répression des auteurs de traite et d'exploitation d'enfants;
- La coordination et le suivi-évaluation des actions.

Ces activités traduisent l'engagement constant des plus hautes autorités du pays à combattre la traite, l'exploitation et le travail des enfants, en collaboration avec toutes les parties prenantes.

## Cibles

Target Beneficiaries	
<b># Enfants</b>	Tous les enfants de moins de 18 ans impliqués dans les travaux dangereux et les Pires Formes de Travail des Enfants dans les zones de production du cacao.
<b># Ménages</b>	Tous les ménages vulnérables dans les communautés productrices de cacao.
<b># Producteurs de cacao</b>	Tous les producteurs de cacao
<b># Communautés de planteurs de cacao</b>	Toutes les communautés productrices de cacao

## Objectifs de l'activité

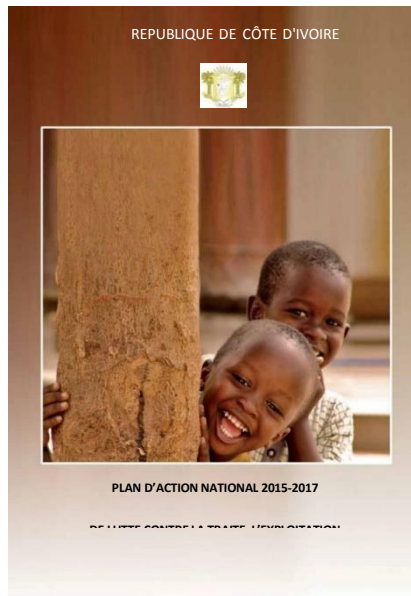
---

Les activités réalisées ont pour objectif de créer un environnement institutionnel, social et juridique plus protecteur de l'enfant, pour prévenir et réduire de façon significative la traite, l'exploitation et le travail des enfants en Côte d'Ivoire à l'échéance 2017.

## Résumé des activités

---

### INTRODUCTION



#### La présentation officielle du Plan d'Action National 2015-2017 de lutte contre la traite, l'exploitation et le travail des enfants

Le 15 décembre 2015 a eu lieu la cérémonie officielle de présentation du Plan d'Action National 2015-2017 de lutte contre la traite, l'exploitation et le travail des enfants, sous la Présidence effective de la Première Dame, **Madame Dominique OUATTARA**, Présidente du CNS.

Le Plan d'Action National constitue le document de stratégie national qui permet à la Côte d'Ivoire d'opérationnaliser ses objectifs en matière de lutte contre la traite, l'exploitation et le travail des enfants.

A ce titre, toutes les activités réalisées concourent à sa mise en œuvre et à l'atteinte de ses objectifs.

### LES ACTIVITES MAJEURES DE 2015 A 2016

#### I. DANS LE DOMAINE DE LA PREVENTION

##### a. Le renforcement du cadre législatif et réglementaire

- L'adoption de la loi no2016-1111 du 08 décembre 2016 relative à la lutte contre la traite des personnes.
- Le séminaire consultatif des parties prenantes, du 08 au 10 novembre 2016 à Grand Bassam sur la révision de la liste des travaux dangereux interdits aux enfants de moins de 18 ans et la détermination de la liste des travaux légers autorisés aux enfants de 13 à moins de 16 ans.

##### b. La sensibilisation des populations

- L'organisation des journées nationales du Cacao et du Chocolat (JNCC 2015), du 1er au 03 octobre 2015 à Yamoussoukro. Organisée par le Conseil du café-cacao autour du thème « quelles contributions du producteur pour une cacaoculture durable ». Les JNCC 2015 ont accueilli environ 2700 participants dont plus de 2000 producteurs de café-

cacao. Un stand d'information mis en place par le CNS et des panels réunissant plus de 400 personnes par jours ont permis de sensibiliser les visiteurs sur l'interdiction de la traite et du travail des enfants.

- L'organisation des JNCC 2016, du 1er au 3 octobre 2016 à Abidjan par le Conseil du Café-Cacao sur le thème : « Agir ensemble pour relever les défis nouveaux de la filière cacao ». Les JNCC 2016 ont accueilli environ 6500 personnes par jour et ont vu la participation d'environ 2000 producteurs de cacao. 800 enfants ont participé à la découverte des étapes de la transformation du cacao en chocolat et participer à des jeux. Au cours de ces journées, plus de 500 personnes par jour ont visité le stand du CNS, toute chose qui a permis de sensibiliser environ 1500 personnes sur la traite et les pires formes de travail des enfants.
- L'organisation de la Journée Mondiale contre le Travail des enfants, le 12 juin 2016 dans le département M'batto par le Ministère en charge du travail et ses partenaires techniques et financiers sur le thème : « éliminer le travail des enfants dans les chaînes de production, c'est notre engagement ». les activités qui ont permis de sensibiliser plus de 5000 personnes sur la lutte contre la traite, l'exploitation et le travail des enfants a nécessité un financement de 21,425,000 FCFA, soit 35,708.34 USD

### c. Le renforcement de la coopération sous-régionale

- La rencontre d'échanges et de partage d'expériences des Premières Dames de la Côte d'Ivoire, Madame Dominique OUATTARA et du Ghana, Madame Nana Lordina Dramani Mahama en matière de lutte contre la traite transfrontalière et les pires formes de travail des enfants, s'est déroulée du 12 au 13 septembre 2016 à Abidjan.
- La rencontre avait pour objectifs d'une part, de mener une concertation en vue de mettre en œuvre une stratégie commune visant à éliminer la traite transfrontalière et les pires formes de travail des enfants en Côte d'Ivoire et au Ghana et d'autre part, de mettre en place un cadre formel de coopération entre les deux pays en matière de lutte contre la traite transfrontalière et les pires formes de travail des enfants.

Au cours de cette rencontre, les deux Premières Dames ont procédé à la signature d'une déclaration conjointe, pour marquer leur volonté commune de soutenir et de s'impliquer dans le renforcement de la coopération entre la Côte d'Ivoire et le Ghana en matière de lutte contre la traite transfrontalière et les pires formes de travail des enfants.

- La signature d'un accord de coopération entre la République de Côte d'Ivoire et la République du Ghana en matière de lutte contre la traite transfrontalière et les pires formes de travail des enfants, du **1<sup>er</sup> au 4 novembre 2016 Accra** au Ghana. Cet accord a

été signé par le Ministre de l'emploi et de la protection sociale de la Côte d'Ivoire, **Monsieur Moussa DOSSO** et son homologue ghanéen de l'emploi et des relations de travail, **l'Honorable Haruna Iddrisu**.

### d. Le renforcement du partenariat Public-privé

- La signature d'un **accord de partenariat entre le CNS et la Fondation ICI**, le **26 avril 2016 à Genève**. Cet accord de partenariat porte sur l'élaboration d'une cartographie des infrastructures scolaires construites ou en voie de construction par les industriels de cacao et leurs partenaires. L'objectif visé est de disposer d'une base de données sur les infrastructures scolaires dans la zone de production de cacao en vue de permettre une meilleure orientation et un suivi des efforts en matière de construction d'écoles.

L'accord porte par ailleurs sur la collaboration et la coordination en matière de suivi et de remédiation du travail des enfants dans les zones de production de cacao, l'amélioration des infrastructures de base dans les zones d'intervention de la Fondation ICI et le renforcement des capacités, ainsi que la formation et la sensibilisation sur le travail des enfants dans le secteur du cacao.

- Le lancement officiel du **projet TRECC** (Transformer l'Education dans les Communautés Productrices de Cacao) de la Fondation Jacobs, Mercredi **17 Février 2016** à l'Ambassade de Suisse en Côte d'Ivoire, sous la présidence effective de la Première Dame, **Madame Dominique OUATTARA**.

### e. Le renforcement de la coopération internationale

- La visite de travail de **Madame Dominique OUATTARA**, Présidente du CNS avec **Monsieur Guy RYDER**, Directeur Général du BIT, au Siège de l'OIT à Genève, du **22 au 26 Avril 2016**. Cette visite de travail avait pour objectif de discuter des critères de dénombrement, de mesure et de qualification des enfants victimes des pires formes de travail des enfants, afin d'éviter les amalgames entre les enfants des paysans qui effectuent un travail socialisant après leurs heures de classe, et les enfants victimes des pires formes de travail des enfants.
- Les consultations pour l'Afrique de l'Ouest et du Nord relatives à **l'alliance 8.7** des objectifs de développement durable (ODDs), du **8 au 9 Septembre 2016** à Abidjan, sous le thème « Unir nos forces pour mettre un terme au travail des enfants, au travail forcé, à l'esclavage moderne et à la traite des personnes ».

Placée sous la parrainage et la présidence effective de Madame Dominique OUATTARA, Première Dame de Côte d'Ivoire et Présidente du CNS, la rencontre a enregistré la

présence de délégués venus de 12 pays à savoir : Benin, Burkina Faso, Côte d'Ivoire, Ghana, Nigeria, Liberia, Mali, Niger, Sénégal, Maroc, Tunisie, Mauritanie.

Ces assises ont permis d'initier un dialogue entre les mandants tripartites et les autres parties prenantes concernées, au sujet des objectifs de développement durable et de la formation de l'Alliance 8.7 et fait des suggestions en vue de son fonctionnement en Afrique de l'Ouest et du Nord.

- Le **dialogue de haut niveau** sur l'Alliance mondiale visant à éliminer le travail des enfants, le travail forcé, l'esclavage moderne, la traite des personnes et le travail des enfants, le **21 Septembre 2016 à New York**.

A l'invitation de Monsieur Guy DYDER, Directeur Général de l'OIT, Madame Dominique OUATTARA, Première Dame de Côte d'Ivoire, Présidente du CNS a participé le 21 Septembre 2016 à New York, à un panel de haut niveau lors du lancement officiel de l'Alliance mondiale visant à éradiquer le travail forcé, l'esclavage moderne, la traite des êtres humains et le travail des enfants, organisé conjointement par l'Organisation Internationale du Travail (OIT) et la Fondation Ford.

Le panel a porté sur le thème suivant "Achieving dignity for those furthest behind through partnerships".

## II. DANS LE DOMAINE DE LA PROTECTION ET DE L'ASSISTANCE AUX VICTIMES

- a. La mise en service de la ligne 116 « Allo enfant en détresse »
  - Les appels reçus de 2015 à 2016 ont permis de secourir 138 enfants en situation d'urgence.
- b. La prise en charge et l'assistance aux enfants victimes de traite et d'exploitation
  - 47 enfants victimes de traite et d'exploitation identifiées dans le cadre des enquêtes de police réalisées par la Sous-direction de la Police criminelle chargée de la lutte contre la traite d'enfants et la délinquance juvénile (SDLTEDJ).
  - 247 enfants victimes de traite et de travail des enfants ont été reçus et écoutés par le service social de la SDLTEDJ de janvier à septembre 2016, dont 80 ont été référés à des ONG pour une prise en charge et 167 enfants remis à leur famille.
  - 18 enfants victimes de traite ont été pris en charge et remis à leurs familles par le Ministère de la Solidarité, de la Famille et de la Protection de l'enfant.
  - 69 enfants en mobilité transnationale victimes de traite, d'exploitation et de maltraitance ont été pris en charge par l'ONG DDECI.



- 15 enfants victimes de traite interne dont 7 filles et 8 garçons ont été pris en charge par l'ONG DDECI.
- 3 maisons d'accueil pour les enfants en situation de détresse sont en cours de construction à Soubré, Bouaké et Ferké.

c. L'amélioration de l'accès des enfants à l'éducation

- 45,000 kits scolaires ont été distribués par le Conseil du Café-Cacao pour un montant de 270,000,000 FCFA, soit 450,000.00 USD.
- 200 kits scolaires ont été distribués par le Ministère en charge du travail pendant la Journée Mondiale contre le travail des enfants de 2015 et 2016.
- 78 salles de classe ont été construites, 95 logements d'enseignant construits, 16 cantines scolaires construites, 78 cabines de latrines construites par le Conseil du Café-Cacao, le tout pour un montant de 1,531,191,978 FCFA, soit 2,551,986.63 USD.

### III. DANS LE DOMAINE DE L'AMELIORATION DES CONDITIONS DE VIE DES PRODUCTEURS

a. La construction, la réhabilitation et l'équipement d'infrastructures sociales de base

- 9 dispensaires et 10 logements d'infirmiers ou de sages-femmes ont été construits par le Conseil du Café-Cacao pour un montant de 505,591,284 FCFA, soit 842,652.14 USD.

50 ambulances ont été distribuées par le Conseil du Café-Cacao pour un montant de 1,500,000,000 FCFA, soit 2,500,000 USD.

96 forages ont été réalisés par le Conseil du Café-Cacao pour un montant de 548,153,376 FCFA, soit 913,588.96 USD.

369 fourniture et pose de pompes ont été effectuées par le Conseil du Café-Cacao pour un montant de 929,067,831 FCFA, soit 1,548,446.38 USD.

b. L'appui à la productivité

- 40,099.5 ha de semences de cacao distribué par le Conseil du Café-Cacao, 38,348 producteurs bénéficiaires pour un montant de 900,000,000 FCFA, soit 1,500,000 USD.
- Distribution de produits phytosanitaires par le Conseil du Café-Cacao : 1,052,795 ha d'insecticides, 316,992,000 ha de fongicides, 1,500 atomiseurs distribués, 525,991 producteurs bénéficiaires pour un montant de 2,600,000,000 FCFA, soit 4,334,000 USD.

### IV. DANS LE DOMAINE DE LA REPRESSION

a. La formation des officiers enquêteurs

- **144 Policiers et Gendarmes** formés en 2016 sur le Droit et Protection des Enfants incluant les modules sur la Traite et les Pires formes de travail des enfants. Ce qui porte à **587**, le nombre d'agents formés depuis 2014, dont **173 officiers** enquêteurs et **13 officiers** enquêteurs de la SDLTEDJ en avril, juin et août 2016

b. **La réalisation d'enquêtes de police**

- **64 enquêtes** portant sur **64 infractions** constatées sur fait de traite et de travail des enfants ont été menées de janvier à décembre 2016 par la SDLTEDJ
- **60 personnes** ont été identifiées au cours des enquêtes menées par la SDLTEDJ dont **43 personnes** ont été mis à la disposition de la justice (déférées).

V. **DANS LE DOMAINE DE LA COORDINATION ET DU SUIVI-EVALUATION**

a. **La mise en œuvre du SOSTECI dans le cadre,**

- Du 17 au 18 décembre 2015 : **évaluation de la mise en œuvre du SOSTECI** dans le cadre du projet PPP-Mars. Le projet s'est déroulé sur une période de 12 mois et couvert 15 localités des départements de Soubré, Méagui et San Pedro pour un financement de **39,494,400 FCFA**, soit **65,824.00 USD**. Le SOSTECI-Mars a permis d'identifier **1 559 enfants travailleurs** dont 62,9% de garçons. 5 enfants sur 10 sont régulièrement inscrits à l'école. 70% de ces enfants travail dans l'agriculture, notamment la culture du cacao. 62,9% des enfants répertoriés travaillent dans le cadre familial. 65,3% vivent avec leurs deux parents biologiques. 45,2% travaillent pendant les vacances scolaires. 41,8% sont âgés de 16 à 17 ans et 29,8% sont âgés de 14 à 15 ans. Ces enfants travaillent en moyenne 33 heures par semaine.
- Du 21 au 22 décembre 2015 : **évaluation de la mise en œuvre du projet SOSTECI-UNICEF**. Le projet s'est réalisé de mars à décembre 2015 pour un montant de **158,949,300 FCFA**, soit **264,915.50 USD**.

Il a permis d'identifier **1,911 enfants travailleurs**. Parmi ces enfants, 66,0% vivent avec leurs deux parents biologiques. 50,4% sont scolarisés. 46,9% ne travaillent que pendant les vacances scolaires et travaillent en moyenne 33 heures par semaine. 35,2% ont entre 16 et 17 ans. 34,2% ont entre 14 et 15 ans et 7,3% ont moins de 10 ans. L'agriculture occupe 71,6% d'entre eux, l'artisanat, 9,9%, les mines, 2,0%, le secteur domestique, 6,2% et le commerce, 9,7%.

Les travaux dangereux dans lesquels sont impliqués les enfants sont le brûlage des champs avec 5 à 11% des enfants, l'abattage des arbres avec 4 à 7% des enfants, la production de charbon de bois pour 1,6 à 6% des enfants et l'épandage des produits agro-pharmaceutiques pour 1,6 à 3,2 % des enfants. 69,1% des enfants travailleurs

exercent généralement dans le cadre familial sans rémunération. Seulement 12,5% des enfants travailleurs sont rémunérés pour le travail effectué.

## Stratégie de coordination et de durabilité

---

La coordination et le suivi-évaluation des actions permettent d'une part, de mieux répartir les efforts sur l'ensemble du territoire national et dans les secteurs d'activités concernés par le travail des enfants et d'autre part, de favoriser la collaboration et la coopération entre les acteurs sur le terrain et de mieux capitaliser les résultats des initiatives. Cette coordination se réalise à deux échelles, au niveau national et au niveau local.

- La coordination au niveau nationale est assurée par le CIM et le CNS. La stratégie de coordination comprend principalement la validation préalable des projets et les réunions de coordination.
- Au niveau local, la coordination est assurée par le Comité départemental ou sous-préfectoral de lutte contre le travail des enfants, présidés respectivement par le Préfet et le Sous-préfet de la localité. A ce niveau, les projets doivent être préalablement présentés à l'Autorité locale avant leur mise en œuvre.
- Quant au suivi-évaluation il se réalise à travers les rapports périodiques d'activités transmis au CNS; les visites de terrain du CNS et du CIM; les réunions périodiques de suivi ; l'évaluation à mi-parcours du Plan d'Action National ; l'évaluation finale du Plan d'Action National et les enquêtes d'impact.
- Au niveau local, les comités départementaux et sous-préfectoraux de lutte contre les pires formes de travail des enfants sont chargés du suivi des projets et activités mis en œuvre dans les localités de leur circonscription territoriale.

## Leçons apprises et les bonnes pratiques

---

Dans la mise en oeuvre des projets et activités de lutte contre la traite et les pires formes de travail des enfants, certaines stratégies et pratiques ont permis d'améliorer les résultats et d'atteindre les objectifs escomptés. Ces stratégies et pratiques peuvent à juste titre être considérés comme des bonnes pratiques. Au titre de ces stratégies et pratiques, trois ont été identifiées, à savoir:

- L'adhésion et l'implication effectives des Autorités locales et des communautés bénéficiaires, dans la mise en oeuvre des projets, favorisent l'appropriation du projet par les parties prenantes et constitue un facteur de succès et de durabilité .
- Le partenariat public-privé permet une meilleure synergie d'action, une gestion plus rationnelle des ressources et une capitalisation plus efficace des acquis.
- Le SOSTECI, comme mécanisme de suivi du travail des enfants, permet aujourd'hui de disposer d'une base de données et d'une cartographie plus précise du phénomène de la traite et des pires formes de travail des enfants.

# REPORT FOR THE GOVERNMENT OF CÔTE D'IVOIRE

## CONCLUSION

Le période 2015-2016 a été marquée par d'importantes actions au nombre desquelles :

- le lancement des travaux de construction de 3 maisons d'accueil pour les enfants en situation de détresse, a Soubré, Bouaké et Ferké. Ces réalisations permettront d'améliorer significativement l'offre de service de protection et de prise en charge des enfants victimes de la traite, de l'exploitation et du travail des enfants ;
- l'adoption de la loi n°2016-1111 du 08 décembre 2016 relative à la lutte contre la traite des personnes. Cette loi réprime les auteurs de la traite des personnes et institue un comité national de lutte contre la traite des personnes ;
- la signature de l'accord de coopération entre la Côte d'Ivoire et le Ghana en matière de lutte contre la traite transfrontalière et le travail des enfants ;
- la révision de la liste des travaux dangereux interdits aux enfants de moins de 18 ans ;
- l'élaboration de la liste des travaux légers autorisés aux enfants de 13 à moins de 16 ans.

Ces actions sont coordonnées, soutenues et supervisées par la Première Dame, **Madame Dominique OUATTARA**, présidente du CNS. Son engagement personnel et son leadership permette à la Côte d'Ivoire d'accélérer le rythme de ses efforts pour une cacaoculture sans travail des enfants.

Contact Information	
<b>Name:</b> Madame Sylvie Patricia YAO <b>Title:</b> Directrice de Cabinet de la Première Dame de Côte d'Ivoire, Secrétaire Exécutif du Comité National de Surveillance (CNS) <b>Tel:</b> (00225) 22480303 <b>Email:</b> dircab1eredame@yahoo.ci	<b>Name:</b> Madame Touré Massandjé-LITSE <b>Title:</b> Directeur Général du Conseil du Café-Cacao <b>Tel:</b> (00225) 20 25 69 69 <b>Email:</b> mtourelitse@cgfcc.ci
<b>Name:</b> Dr. N'GUETTIA Martin <b>Title:</b> Directeur de la lutte contre le Travail des Enfants, Secrétaire Exécutif du Comité Interministériel (CIM) <b>Address:</b> Abidjan, Côte d'Ivoire <b>Tel:</b> (00225) 20210157 <b>Email:</b> Nguettiamartin@yahoo.fr	<b>Name:</b> Madame Sandrine KRAIDY <b>Title:</b> Directrice de la Protection de l'Enfant <b>Address:</b> Abidjan, Plateau <b>Tel:</b> (00225) 20 32 42 33 <b>Email:</b> sandyndoly@yahoo.fr
<b>Name:</b> Monsieur Amany KONAN <b>Title:</b> Consultant National en charge de la lutte contre le Travail des Enfants au Cabinet de la Première Dame <b>Address:</b> Abidjan, Cocody <b>Tel:</b> (00225) 22 48 03 03 <b>Email:</b> amanykonan@yahoo.fr	

## PHOTOS DES ACTIVITES REALISEES

1. La cérémonie officielle de présentation du Pan d'Action National 2015-2017 de lutte contre la traite, l'exploitation et le travail des enfants, le **15 décembre 2015 à Abidjan**.



- 
2. La rencontre de travail entre Madame Dominique OUATTARA, Présidente du CNS et Monsieur Guy RYDER, DG de l'OIT sur les critères de mesure du travail des enfants, le 23 avril 2016 à Genève.





3. La signature de la convention de partenariat entre le CNS et la Fondation ICI portant sur la mise en œuvre du Plan d'Action National 2015-2017 de lutte contre la traite, l'exploitation et le travail des enfants, le 24 avril 2016 à Genève.



4. La signature de la déclaration conjointe d'engagement des Premières Dames de la Côte d'Ivoire, Madame Dominique OUATTARA et du Ghana Madame Nana Lordina Dramani Mahama pour la lutte contre la traite transfrontalière et le travail des enfants, le 13 septembre 2016 à Abidjan.



5. La signature de l'accord de coopération entre la Côte d'Ivoire et le Ghana en matière de lutte contre la traite transfrontalière et le travail des enfants, le 3 novembre 2016 à Accra au Ghana.



- 
6. Lancement officiel des consultations pour l'Afrique de l'Ouest et du Nord relatives à l'alliance 8.7 des ODDs, le 8 Septembre 2016 à Abidjan.



- 
7. Le séminaire des experts de la Côte d'Ivoire et de l'OIT sur la révision de la liste des travaux dangereux et la détermination de la liste des travaux légers autorisés aux enfants de 13 à moins de 16 ans, du 08 au 10 novembre 2016 à Grand Bassam.





8. Le lancement officiel du projet TRECC de la Fondation Jacobs, le 17 Février 2016 à l'Ambassade de Suisse en Côte d'Ivoire



9. Le dialogue de haut niveau sur l'Alliance mondiale visant à éliminer le travail des enfants, le travail forcé, l'esclavage moderne et la traite des personnes, le 21 Septembre 2016 à New York





10. L'organisation des journées nationales du Cacao et du Chocolat (JNCC 2015), du 1er au 03 octobre 2015 à Yamoussoukro et JNCC 2016 à Abidjan.



- 
11. L'organisation des journées mondiale contre le travail des enfants, le 12 juin 2016 dans le département M'batto sur le thème : « éliminer le travail des enfants dans les chaînes de production, c'est notre engagement ».



<b>Funding Partner</b>	Ghana Cocoa Board (COCOBOD)
<b>Name of Activity</b>	COCOBOD Child Education Support Program
	Youth-In-Cocoa Program
<b>Implementing Partner(s)</b>	COCOBOD
<b>Funds Committed to Combat Child Labor in the Cocoa Sector</b>	Unknown
<b>Funds Spent During Reporting Period</b>	N/A
<b>Target Country(ies)</b>	Ghana

## Summary Progress Report

COCOBOD initiated and funded the construction of primary schools' and cocoa roads network improvements in 2016. The projects constituted COCOBOD's contribution to complement the Government of Ghana's efforts at improving livelihoods in cocoa communities and reducing worst forms of child labour in cocoa. The interventions aim at improving child access to schools particularly in deprived communities and enhance farmer access to markets to sell other farm produce.

In the 2014/2015 year COCOBOD completed the site selection, obtained authorization from the local authority in 14 beneficiary communities, and secured approval from the Public Procurement Authority to award the contracts for Phase I of the child education support program. Entity tendering processes were completed and contracts were awarded for construction to commerce.

Construction of seven (7) of the approved 14 school buildings commenced in during the year 2015/2016 in some of the communities and the buildings are in various stages of completion. In one case, work is more than 95% complete while for others work is between 10 -15% completed. Four (4) other contractors are yet to start building their structures though their contracts have been signed.

Public education in cocoa communities about worst forms of child labor through extension farmer contacts and farmer rallies intensified. Child labor education at farmer meetings has been a part of the cocoa extension curriculum. Providing basic schools infrastructure, including kindergarten, in deprived communities and motivating the youth to appreciate the economic benefits of cocoa remain essential socioeconomic goals. COCOBOD has been engaging the youth to develop professional careers in cocoa farming to improve their livelihoods.

Starting with 2,000 young men and women in 2014, the Youth-In-Cocoa program membership rose to 14,000 young farmers actively cultivating 17,000 hectares of land in 2015. The current membership as at the end of the 2015/2016 year is 46,091, made up of 33,546 males and 17,906 females with 138,307.28 hectares under cultivation.

## Targets

Target Beneficiaries	
# of Children	Unknown
# of Households	Unknown
# of cocoa farmers	Unknown
# of communities	Unknown

## Activity Objectives

The focus of COCOBOD's child education support program is to increase access to schools at short distances. Siting of schools in deprived cocoa communities will stimulate interest and encourage children to remain in the classrooms while parents attend to their cocoa farms. The direct beneficiaries of the program include children/wards of cocoa farmers and local residents.

The Youth-In-Cocoa program is an initiative designed to encourage the youth to turn to cocoa farming as a livelihood option. The program's focus is to reach out to the unemployed school leavers including university graduates and corporate youth to appreciate the economic benefits of cocoa farming.

- The principal objective of the Youth-in-Cocoa program is to assist youth in developing careers in the cocoa business, improve rural livelihoods and establish the foundation for a sustainable cocoa supply.
- The young entrepreneurs will benefit from continued technical assistance from COCOBOD in the form of free hybrid cocoa seedlings, fertilizers, extension education in good agricultural practices including child labour, and farmer business school support.
- Ensuring active participation of young women to assist them in gaining economic independence and prepare financially to support their families.

## Summary of Activities

The child education support program aims at providing a conducive learning environment that can sustain the interest of children to attend and remain in the classroom. The program is an additional support to cocoa farmers, their families, and local dwellers by offering:

- Fee-free basic education to develop academic competencies in children and create opportunities for children who lack access to schools within reasonable distance;
- Schools in deprived cocoa communities, increase school attendance, and help prevent child idleness and vulnerability to engage in worst forms of child labour;
- Avenues for farmers with toddlers to enrol them in schools and so that the farmers can concentrate on the farm work to increase productivity;
- Conducive learning environments and office accommodations for head teachers to promote effective supervision of teaching and learning; and,

- Portable water for the schools and communities to ease the burden of children travelling long distances for water interrupting school attendance.

The Ghana Cocoa Board is optimistic that its program of support for basic education is consistent with President Akufo-Addo government policy to offer Ghanaian children fee free education up to senior secondary. Fee free education will provide an equal opportunity for all children to access quality basic education to complete high school.

Some of the key activities of the Youth-In-Cocoa program include:

- Assisting the young cocoa farmers to achieve and sustain farm productivity at 1000kg/ha;
- Training the young farmers, currently numbering 46,091 and later additions, to become the next generation of cocoa farmers capable of delivering a sustainable supply of cocoa;
- Using the Youth-in-Cocoa initiative to fix the existing gap in cocoa sector labour supply and address the menace of the worst forms of child labour in cocoa.

### Next Steps

As part of its commitment towards eliminating the worst forms of child labour, COCOBOD will continue to commit funds, annually, towards building more schools to expand the infrastructure base in other selected deprived cocoa communities in Ghana. Further, COCODOB with the support of the Government of Ghana is planning to resume funding of the key activities of the National Program for the Elimination of Worst Forms of Child Labor (NPECLC) in October 2017. The Ministry of Employment and Labor Relations has initiated consultations with the partners to restructure NPECLC and ensure a sustainable future of the program.

COCOBOD continues to provide technical and material support and assists the young farmers to form cooperatives so that they can access bank credits. Starting 2017, COCOBOD is providing funding to rehabilitate diseased and aged cocoa farms. Chiefs and landowners have responded favourably to appeals from COCOBOD urging the release of their lands to the youth under special financing agreements. The Youth-in-Cocoa initiative is a child labour intervention in that is addressing youth unemployment and helping families to address the labour needs of cocoa farming. By assisting the youth to become gainfully employed in the cocoa business and providing school infrastructure, COCOBOD is using the two interventions concurrently to reduce rural poverty and urban migration. Rural poverty is the principal trigger of the worst forms of child labour.

Contact Information
<b>Name:</b> Dr. Stephen Opuni <b>Title:</b> Chief Executive <b>Address:</b> Ghana Cocoa Board Cocoa House P.O. Box 933 Accra, Ghana <b>Tel:</b> 233-302-661752 <b>Email:</b> ce.office@yahoo.co.uk ce.office@cocobod.gh

## REPORT FOR THE U.S. DEPARTMENT OF LABOR

<b>Funding Partner</b>		US Department of Labor
<b>Project Title</b>	<b>Implementing Organization</b>	<b>Funding Amount</b>
Eliminating Child Labor in Cocoa (ECLIC)	International Cocoa Initiative	\$4.5 Million
Mobilizing Community Action and Promoting Opportunities for Youth (MOCA)	Winrock International	\$4.5 Million
Assessing Progress in Reducing Child Labor in Cocoa Growing Areas of Côte d'Ivoire and Ghana	N.O.R.C., University of Chicago	\$3 Million
<b>Funds Spent During Reporting Period</b>		\$1,814,423
<b>Target Country(ies)</b>		Côte d'Ivoire / Ghana

### Summary Progress Report

In late 2015, under the Framework, USDOL committed an additional \$12 million to the alleviation of child labor in cocoa through three projects. USDOL awarded \$4.5 million to ICI to implement the ECLIC project in Côte d'Ivoire. Winrock International received \$4.5 million to implement the MOCA project in Ghana. In addition, N.O.R.C. of the University of Chicago received \$3 million to identify various interventions carried out since the signing of the Declaration in 2010, assess their relative effectiveness, and measure progress towards the achievement of the various goals and targets outlined in the Declaration and Framework, including the goal of a 70 percent reduction in aggregate of the worst forms of child labor in the cocoa sectors of Côte d'Ivoire and Ghana by 2020.

In 2016, the ECLIC and MOCA projects focused on start-up, prioritizing the development of their project documents, monitoring and evaluation plans, and other necessary project deliverables. Both projects will conduct baseline surveys in project areas and are expected to begin providing direct services in the beginning of 2017. During 2016, N.O.R.C. conducted introductory meetings with relevant stakeholders in Côte d'Ivoire and Ghana including line ministries as well as the Office of the First Lady of Côte d'Ivoire. N.O.R.C. also began negotiating a Memorandum of Understanding (MOU) with the Office of the First Lady of Côte d'Ivoire regarding their future collaboration. In addition, N.O.R.C. began developing and designing the tools they will use to collect intervention data, map interventions, and analyze the relative effectiveness of different types of interventions.

### Targets

Target Beneficiaries	
<b># of Children</b>	8,650
<b># of Households</b>	3,100
<b># of cocoa farmers</b>	N/A
<b># of communities</b>	90

The ECLIC project will target 5,450 vulnerable children engaged in or at risk of child labor in Côte d'Ivoire, with a focus on child labor in cocoa production. The project will also target 1,500 vulnerable households for sustainable livelihoods promotion. The MOCA project will use an integrated area-based approach to target 3,200 youth ages 15-17, who are engaged in or at risk of entering hazardous child labor in Ghana, with a focus on child labor in the cocoa sector. In addition, the project will provide livelihood services to approximately 1,600 adult female household members as a strategy for reducing household reliance on child labor. These two USDOL-funded country-specific projects will also focus on community action and empowering communities to lead the charge in the fight against the worst forms of child labor in the cocoa sector.

Since the project implemented by N.O.R.C. will focus on mapping interventions, assessing the effectiveness of these interventions, and child labor research, there are no direct service targets to be counted.

### Activity Objectives

---

The ECLIC project's overarching objective is to reduce child labor in 50 cocoa growing communities in Côte d'Ivoire by increasing community mobilization in the fight against child labor; increasing the income of households with children engaged in or at risk of child labor; and, improving access to quality education opportunities for children engaged in or at risk of child labor.

The MOCA project seeks to reduce incidences of child and hazardous labor in the project's 40 target cocoa growing communities through increasing prioritization of child labor by community and external stakeholders; increasing acceptable work opportunities among beneficiary youth 15-17 years of age; improving the employability of youth through increased knowledge, attitudes, and skills; and, increasing income in beneficiary households.

The objectives and activities to be conducted by N.O.R.C. can be seen in more detail in the section on Summary of Activities below.

### Summary of Activities

---

#### MOCA

- Create or reinforce community-level committees to develop and implement CAPs, train community members, including youth, on child labor, acceptable work, and occupational safety and health (OSH), and support community led efforts to address child labor and promote acceptable working conditions for youth ages 15-17 at the local and district level
- Increase access and improve quality of vocational training opportunities for youth ages 15-17, align the training curriculum with local job market needs, and ensure adequate materials and equipment are made available to support training needs
- Organize women into community-based organizations to provide livelihood skills training, expand access to microloans and savings, and implement income generating activities



### ECLIC

- Create or reinforce community-level committees to develop and implement CAPs, visit households and farms to collect data on child laborers and those at risk, and refer child protection cases in accordance with existing protection mechanisms
- Train children, communities, and committees on child labor, the causes, consequences and solutions (with a focus on education and vocational training) and OSH
- Organize women and young people into community-based organizations to implement income generating activities
- Increase access and improve quality of educational opportunities for children through formal education services (e.g. birth certificates, provision of scholastic materials), non-formal education services (e.g. vocational training, bridging classes), increased capacity of school management committees and teachers, and reinforcing child protection in schools

### N.O.R.C.

- Identify and collect detailed geographical and program information relating to interventions that have taken place since the signing of the Declaration to address child labor in cocoa-growing areas of Côte d'Ivoire and Ghana, and present this information in an interactive, web-based platform
- Evaluate the effectiveness of these interventions based on, 1) information and data collected and catalogued in the mapping platform, 2) qualitative data collected via interviews and focus group discussions, and 3) quantitative data from national representative survey of child labor in the two countries
- Conduct a survey of child labor in cocoa-growing areas of Côte d'Ivoire and Ghana during the 2018/19 harvest season to develop population estimates for the prevalence of working children, child labor, and the worst forms of child labor

### Next Steps

---

In 2017, ECLIC and MOCA staff will conduct baseline surveys in project regions to understand the context in which the programs will operate and to better inform programmatic decisions. The projects will identify project communities and participants and, once data collection for the baseline is complete, will begin implementing direct services through the activities mentioned previously.

N.O.R.C. will begin collecting intervention data for the assessment and mapping tool as well as conduct interviews and focus group discussions with a wide variety of individuals in the cocoa sector (e.g. government officials, industry representatives, and implementing partners and project staff). N.O.R.C. will also conduct a listing in the cocoa growing regions of Côte d'Ivoire and Ghana to identify and list all agricultural households in order to develop a sampling frame for the 2018/19 survey. In addition, N.O.R.C. will continue developing visualization and survey tools and sharing with relevant stakeholders for their input.

## REPORT FOR THE U.S. DEPARTMENT OF LABOR

Contact Information	
<p><b>Name:</b> Tanya Rasa</p> <p><b>Title:</b> Africa Division Chief</p> <p><b>Address:</b> U.S. Department of Labor Bureau of International Labor Affairs Office of Child Labor, Forced Labor, and Human Trafficking 200 Constitution Ave, NW, Room S5315 Washington, D.C. 20210, USA</p> <p><b>Tel:</b> 202-693-4893</p> <p><b>Email:</b> rasa.tanya@dol.gov</p>	<p><b>Name:</b> Caroll Miloky</p> <p><b>Title:</b> Project Manager, ECLIC</p> <p><b>Address:</b> International Cocoa Initiative II Plateaux, 7ème Tranche Lot 3244, Ilot 264 Abidjan-Cocody, Côte d'Ivoire</p> <p><b>Tel:</b> +225 22 52 70 97</p> <p><b>Email:</b> c.miloky@cocoainitiative.org</p>
<p><b>Name:</b> Julie Barton Vanrijkel</p> <p><b>Title:</b> Program Officer, MOCA</p> <p><b>Address:</b> Winrock International 2121 Crystal City Drive, Suite 500 Arlington, VA 22202, USA</p> <p><b>Tel:</b> 703-302-6513</p> <p><b>Email:</b> jvanrijkel@winrock.org</p>	<p><b>Name:</b> Kareem Kysia</p> <p><b>Title:</b> Senior Survey Director, International Projects</p> <p><b>Address:</b> N.O.R.C. at the University of Chicago 4350 East-West Highway, 8<sup>th</sup> Floor Bethesda, MD 20814, USA</p> <p><b>Tel:</b> 301-634-9470</p> <p><b>Email:</b> kysia-kareem@norc.org</p>



## REPORT FROM WORLD COCOA FOUNDATION ON COCOAACTION

<b>Funding Partner</b>	International Chocolate and Cocoa Industry
<b>Name of Activity</b>	CocoaAction
<b>Implementing Partner(s)</b>	World Cocoa Foundation (WCF)
<b>Funds Committed to Combat Child Labor in the Cocoa Sector</b>	Unknown
<b>Funds Spent During Reporting Period</b>	N/A
<b>Target Country(ies)</b>	Côte d'Ivoire / Ghana

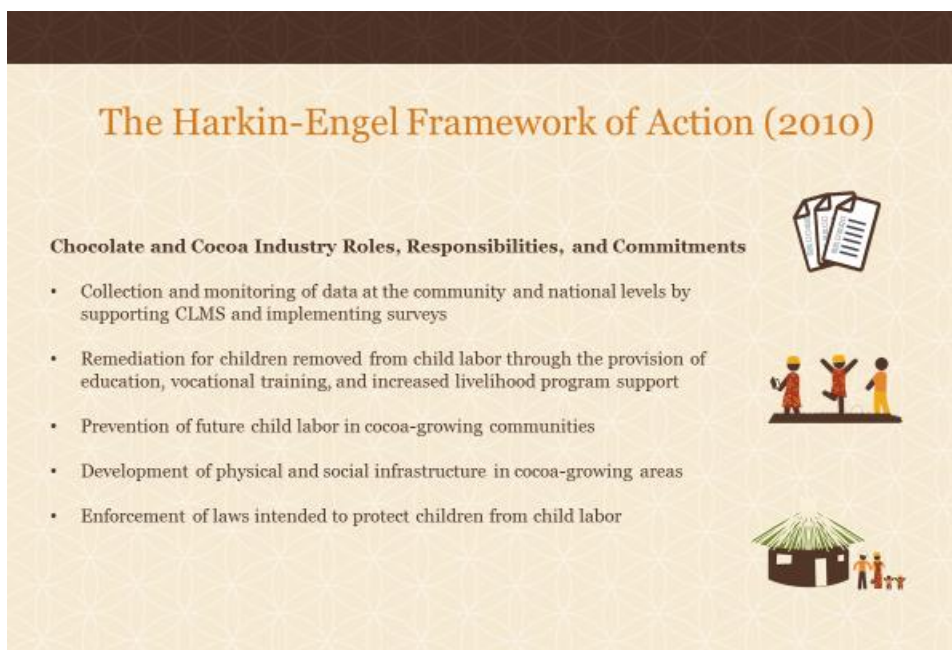
### I. Introduction

WCF, on behalf of nine leading members of the chocolate and cocoa industry, is pleased to submit its 2016 CocoaAction overview report in support of the original 2001 Harkin-Engel Protocol and the 2010 Framework of Action to reduce the worst forms of child labor in the cocoa growing regions of Côte d'Ivoire and Ghana. The report below reinforces the chocolate and cocoa industry's commitment to both the overarching goal of the Framework, as well as specific activities outlined in the Framework that support the overarching goal. CocoaAction is also closely aligned with the United Nations Global SDGs, adopted in 2015, namely those focusing on poverty eradication, quality education, gender equality, reduced inequalities, elimination of the worst forms of child labor and partnerships to achieve these goals.

Because of the unprecedented scope of interventions and requisite coordination across the nine CocoaAction companies, the World Cocoa Foundation informed the CLCCG in early 2017 that a complete report, including quantitative information, for 2016 activities will be published during the third quarter of 2017 and proposed at that time as an addendum to this report.

#### *How did the Chocolate and Cocoa Industry Get Here?*

Since 2001, the chocolate and cocoa industry has been working with the U.S. government, the governments of Côte d'Ivoire and Ghana and civil society to eliminate the worst forms of child labor in cocoa. Fifteen years ago, when the partnership began, the problems seemed intractable and their causes poorly understood. At that time, structures necessary for tackling a phenomenon, which transcends national boundaries and touches on diverse and highly complex supply chains, not to mention remote family-owned and operated farms, simply did not exist. Against this backdrop, Côte d'Ivoire was experiencing historic political upheaval. While it may appear to a casual observer that progress has been frustratingly slow, huge strides have been made in better understanding the issue and in jointly formulating approaches and solutions. The relationships formed between industry, governments and civil society contributed to the elaboration of the CocoaAction strategy.



Fifteen years ago, most stakeholders neither understood the real magnitude of the worst forms of child labor nor how to address them. Since that time, the following advances have been observed:

- Near-universal awareness -- on the part of West African governments, within cocoa-farming communities and within the chocolate and cocoa industry -- that the worst forms of child labor exist and must be eliminated
- Acceptance of shared responsibility among all stakeholders, and especially the Harkin-Engel Protocol and Framework of Action signatories. Fifteen years ago, it was widely thought that only farmers' children were engaged in work on cocoa farms and that this did not equate with worst forms of child labor. Industry and governments looked upon any interventions as meddling in the private affairs of cocoa farm families. Now it is widely accepted that all stakeholders bear some responsibility for the well-being of children in cocoa-growing communities.
- Establishment of mutually respectful and trusting partnerships among stakeholders. There now exists an understanding that solutions-oriented partnerships are the best way to achieve progress and ultimately eradicate the worst forms of child labor in the cocoa supply chain.
- A growing understanding, now translated into on-the-ground activities, among all stakeholders that holistic, child-centered community development, women's empowerment and improved access to education are all key elements in ending the worst forms of child labor.



- Acceptance that all stakeholders have a role to play in ensuring quality education to children in cocoa-growing communities. In the early years of the Harkin-Engel Protocol, the chocolate and cocoa industry was reluctant to become engaged in education-focused activities that were thought to be the unique purview of governments. The report below demonstrates a substantial change in this thinking.

Despite these advances, the most recent survey on child labor in West African cocoa-growing areas, published in 2015 by Tulane University under the provisions of the Harkin-Engel Protocol, makes it clear that much remains to be done before the Framework's overarching goal can be achieved. Nevertheless, the Framework, and the more recently adopted UN Sustainable Development Goals, provide the best path forward and build upon the understandings and learnings of the past 15 years.

Industry's vision of CocoaAction, as well as its unprecedented areas of coordinated intervention in support of cocoa farm productivity and cocoa communities' development, is also built upon these same learnings and is therefore closely tied to the goals outlined in both the Framework and the SDGs.

# REPORT FROM WORLD COCOA FOUNDATION ON COCOAACTION

## Roadmap to Success: a Commitment to the SDGs

Productivity		 Good Agricultural Practices	 Replanting & Rehabilitation	 Fertilizer & Soil Fertility
SDGs	CocoaAction Results Framework for Farmers			
1.5	Build resilience against climate related extreme events	1.1	Adopt recommended good agricultural practices*	
		1.2	Adopt rehabilitation techniques using recommended planting materials*	
		1.3	Adopt soil fertility management*	
2.3	Double agricultural productivity	1	Increased cocoa yield for targeted CocoaAction farmers	
		1.1	Adopt recommended good agricultural practices*	
		1.2	Adopt rehabilitation techniques using recommended planting materials*	
		1.3	Adopt soil fertility management*	
2.4	Ensure sustainable food production systems	1.1.1	Farmers trained on recommended practices (GAPs, Rehabilitation, Soil Fertility), with improving inclusion of women farmers	
13.1	Strengthen adaptive capacity to climate-related hazards	1.1	Adopt recommended good agricultural practices*	
		1.2	Adopt rehabilitation techniques using recommended planting materials*	
		1.3	Adopt soil fertility management*	
13.3	Improve awareness on climate change mitigation	1.1	Adopt recommended good agricultural practices*	
		1.2	Adopt rehabilitation techniques using recommended planting materials*	
		1.3	Adopt soil fertility management*	
12.6	Encourage companies to adopt sustainable practices	Q	<i>What is CocoaAction?</i> A voluntary industry-wide strategy that aligns the world's leading cocoa and chocolate companies, origin governments, and key stakeholders on regional priority issues in cocoa sustainability.	
9.1	Develop sustainable infrastructure	2.2.1	Improved educational infrastructure, equipment, or materials based on community needs	
Community Development		 Child Labor Prevention	 Primary Education	 Women's Empowerment
SDGs	CocoaAction Results Framework			
8.7	Eradicate child labor	2.2	Increased child protection in CocoaAction communities and significantly reduced child labor in CocoaAction farming households and CocoaAction communities	
16.2	End child exploitation	2.2	Increased child protection in CocoaAction communities and significantly reduced child labor in CocoaAction farming households and CocoaAction communities	
		2.2.1	Increased number of operating child labor monitoring and remediation systems and child protection committees (or similar structure)	
4.1	Ensure primary and secondary education	2.1	Increased number of primary schools, that are "functioning effectively"	
5.5	Ensure women's participation in leadership	2.3	Increased capabilities and opportunities of women to generate increased income and influence decisions	
		2.3.2	Increased participation by women in farmer, community and/or women organizations	
17	Revitalize the global partnership for sustainable development	Q	<i>What is CocoaAction?</i> A voluntary industry-wide strategy that aligns the world's leading cocoa and chocolate companies, origin governments, and key stakeholders on regional priority issues in cocoa sustainability.	

\*if required

## *History of Chocolate and Cocoa Industry Reporting*

In the past, the six Harkin-Engel participating companies (Barry Callebaut, Ferrero, The Hershey Company, Mars, Incorporated, Mondelēz International and Nestlé) submitted annual reports on company-specific program activities that worked to reduce the worst forms of child labor. These individual company commitments made in 2010 were fully completed as of 2015. Therefore, future reporting about industry efforts to reduce the worst forms of child labor will be done by WCF via an annual CocoaAction overview CLCCG report that covers both these companies activities and those of three additional companies (Blommer, Cargill, and Olam) committed to the CocoaAction strategy and all using the same key performance indicators. These nine CocoaAction companies (Barry Callebaut, Blommer, Cargill, Ferrero, The Hershey Company, Mars, Incorporated, Mondelēz International, Nestlé and Olam) are providing aggregated reports through the CocoaAction framework.

Before turning to an overview of the core child labor interventions and related activities that are the focus of this submission, it is useful to understand the context-setting history of CocoaAction.

## Overview of CocoaAction

CocoaAction is an unprecedented effort to share information, best practices and the same core interventions across the cocoa supply chains of nine leading chocolate and cocoa companies that source cocoa from Côte d'Ivoire and Ghana.<sup>1</sup> Simply put, it is an industry-wide effort to transform the world for cocoa farmers and their families in West Africa. The strategy brings the world's leading cocoa and chocolate companies together to accelerate sustainability in the cocoa supply chain. To be successful, CocoaAction depends on partnerships between governments, cocoa farmers, international and local NGOs and the chocolate and cocoa industry to enhance farmer livelihoods and strengthen community development in Côte d'Ivoire and Ghana – the world's leading cocoa-producing countries. CocoaAction intends to train and deliver improved planting material and fertilizer to 300,000 cocoa farmers and empower an estimated 1200 communities through education, child labor monitoring, and women's empowerment. The success of the CocoaAction strategy is self-measured by a common set of Key Performance Indicators (KPIs) agreed upon by the companies with input from the two governments and civil society and used by all participating companies. The results of the strategy's implementation will be publicly reported on a regular basis.

While this CLCCG overview report is focused on community development activities, CocoaAction is organized around both Community Development and Productivity activities. Within these two activities are six different work streams, or thematic areas, that focus on the greatest needs of the cocoa sector in the two countries: 1) Community Development; 2) Government and Donor Alignment; 3) Innovations/Future Forms of Extensions; 4) Shared Commitment to Measuring Progress and Impacts; 5) Planting Material and 6) Fertilizer and Soil Fertility.

Although this report does not focus in detail on CocoaAction's productivity interventions, these actions are an essential element in realizing a reduction and ultimately elimination of the worst forms of child labor, as laid out in both the Framework of Action and the SDGs. Too often, the reason that children are engaged in the worst forms of child labor is because farm families are too poor to hire workers and/or

send their children to school. Increased farmer incomes will improve the livelihoods of these farmers and their families as envisaged in the Framework of Action and SDG 1. CocoaAction companies in 2016 were implementing the CocoaAction productivity interventions.

### 2016 Accomplishments

The 2016 accomplishments laid out below are qualitatively measured, gleaned from interviews with CocoaAction companies. Quantitative data from CocoaAction will be provided in a third-quarter 2017 addendum to this report. Due to the complexities of coordinating a comprehensive industry-wide strategy to improve sustainability of the cocoa sector, CocoaAction's full impact may not be known for years. However, since the strategy's inception in 2014 and its full implementation beginning in 2016, encouraging and demonstrable progress has been made, while at the same time needed refinements have been incorporated.

**Beginning in 2016, CocoaAction companies were doing more than ever before to share and learn from each other and other experts on objectives which are well aligned with the Framework of Action and the SDGs surrounding community development.**

*By the end of 2016 CocoaAction companies were implementing community development activities in their supply chains.* This report conveys the progress toward alignment, cooperation and on-the-ground projects that are leading to future reportable quantitative metrics. Alignment, used in this context, means industry members (i.e., chocolate and cocoa companies) working together on a broad sustainability strategy and then coordinating closely with governments and other stakeholders so that all parties have a shared perspective on what is needed to accelerate sustainability in the cocoa sector and ultimately achieve the Framework of Action goals, as well as those of the SDGs. Together, these stakeholders are all committed to working to improve farmer productivity and community development in Côte d'Ivoire and Ghana.

### Challenges

As full implementation of CocoaAction got underway in 2016, companies encountered a range of challenges, several of which were new, while others were longstanding and not unfamiliar to longtime observers of development issues in West Africa. Where possible CocoaAction companies are often relying on farmer cooperatives as the vehicle for farm-level implementation of community development programs. CocoaAction companies have found, however, that coops tend to more easily understand the benefits of productivity programs compared to those focused on community development. It was observed by these companies that coop staff need more training and education before they are ready to work with farmers on community development issues. Coops must be able to provide financial benefits to farmers and their families. As one CocoaAction company noted, when coops simultaneously implement both community development and productivity programs, "suddenly the farmers understand there is a whole world of opportunity."



## II. CocoaAction and the Prevention of the Worst Forms of Child Labor

### Child Labor Focus

Reducing the number of children participating in the worst forms of child labor is the responsibility of industry, governments, NGOs, civil society, communities and families, among others, and is a top priority for WCF and CocoaAction. Child labor is both a symptom of and contributing factor to poverty, and any approach that aims to eliminate child labor must include a focus on alleviating poverty. CocoaAction's strength lies in combining community development and farmer productivity with the intention of raising farm level and household incomes, an approach that serves as a powerful driver of change in cocoa-growing communities.

In alignment with both the Framework of Action's suggested interventions and the Sustainable Development Goals focused on provision of quality education (SDG 4), gender equality (SDG 5) and elimination of the worst forms of child labor (SDG 8.7), CocoaAction is providing the framework for aligned and coordinated activities across nine companies in each of the following intervention areas:

- Increasing effectively functioning primary education for all children (SDG 4)
- Establishing child labor monitoring and remediation systems in the cocoa supply chain (Framework of Action)
- Improving farmer incomes, especially considering the clear majority of cocoa in West Africa is grown on small, family-owned farms (Framework of Action)
- Involving local communities in the effort, including awareness-raising and training of farmers and communities in child labor sensitization (SDG 8)
- Improving labor efficiency and developing a more formalized adult labor market in cocoa-growing communities that are reinforced by strong regulatory and legal systems (SDG 8)

#### INDUSTRY-SUPPORTED ACTIVITY EXAMPLE: COMMUNITY CHILD PROTECTION

In 2016, ICI with the support of several CocoaAction companies conducted training workshops for CCPC members from 12 cocoa-growing communities in Assin North and South in Ghana. Participants' awareness was raised on worst forms of child labor, including bush burning, carting of heavy loads, chemical application, and hazardous labor. The workshop included modules focused on the implementation of Community Action Plans, advocacy, resource mobilization, participatory monitoring and evaluation, and took stock of the CCPC's results since being trained and equipped to raise-awareness and promote child protection.



## Shared Work and Commitments

Achieving reductions in child labor requires a sustained collaborative effort by public and private stakeholders, including through multi-stakeholder platforms such as the International Cocoa Initiative, which possesses unequalled expertise in addressing child labor in the cocoa sector. In Côte d'Ivoire and Ghana, government ministries have recognized the ICI child labor training materials as the national standard. In addition, ICI now serves as a technical partner for individual

CocoaAction companies as well as playing an increasingly prominent role as a technical advisor sharing best practices and expertise with governments, civil society and industry. As an example the CocoaAction platform of coordinated intervention in support of cocoa farm productivity and cocoa community development benefited from [ICI's research](#) examining the impact of public and private investments in raising cocoa farmers' productivity on the risk of child labor and on the labor market in Ghana and Côte d'Ivoire.<sup>2</sup> WCF is confident that continued close collaboration among those who share both expertise in and responsibility for reducing the worst forms of child labor in Côte d'Ivoire and Ghana, including the governments of cocoa-producing countries and continued involvement by the U.S. Department of Labor, is the right formula for achieving the overarching goal of the Framework of Action.

ICI is but one successful example of close collaboration between all parties seeking to end child labor in cocoa. CocoaAction also welcomes and benefits from close engagement with civil society organizations and others who are truly interested in working together to find solutions to the problems, including the worst forms of child labor, that too often confront rural cocoa-growing communities. We join with all Framework of Action participants in inviting all stakeholders with expertise, information and ideas to work together to share information, and learn best practices from each other.

## Core Interventions 2016

As predicted in the 2015 CocoaAction report, in 2016 CocoaAction companies began to align activities across three core interventions. The CocoaAction core interventions are actions that companies commit to implementing or supporting in communities where they are putting in place the CocoaAction package, and which contribute directly to the CocoaAction outcomes. This includes a commitment by the companies to monitor the CocoaAction indicators corresponding to the core interventions.

CocoaAction community development activities cover three interrelated areas: child protection, education and women's empowerment for a holistic approach to community development that is built upon community empowerment processes. Many of the interventions will overlap and create synergies,

### INDUSTRY-SUPPORTED ACTIVITY EXAMPLE: COMMUNITY CHILD PROTECTION

In 2016, WCF, ICI, and other stakeholders published a study, "Researching the Impact of Increased Cocoa Yields on the Labour Market and Child Labour Risk in Ghana and Côte d'Ivoire".



The research found that while increased cocoa yields do not significantly increase the risk of child labor at household level, access to affordable adult labor remains an important challenge for poor farmers.



for example, activities under education and women's empowerment will also contribute to child protection. The CocoaAction core interventions related to child protection are:

- Raise awareness in community on child labor
- Form and/or train Child Protection Committees (CPC) or other community-based structure or person
- Build and make operational Child Labor Monitoring and Remediation Systems (CLMRS)

The magnitude of the CocoaAction company commitment to the core interventions related to child protection is unprecedented with an across-the-board commitment to build an effectively functioning Child Labor Monitoring and Remediation Systems that reaches all CocoaAction farmers in the company's supply chain. It is this specific action that gets at the heart of the actions necessary to eliminate the worst forms of child labor, as articulated in both the Framework of Action and SDG 8.7.

*Raise awareness in community on child labor*

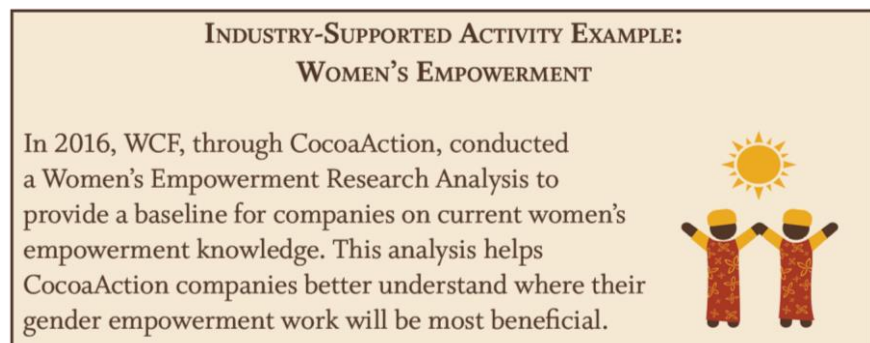
**CocoaAction companies made significant progress in awareness raising in 2016, and in studying and building ways to empower women in their local communities.**

Women's empowerment (SDG 5) has been shown through extensive research on cocoa communities to be a driver of education and training for children in cocoa-growing communities. This is also a Framework of Action priority. A key element in ensuring local

buy-in and engagement on child labor is conducting awareness-raising within the community. This awareness-raising and sensitization should start from the initial engagement with the community and with multiple relevant community leaders, committees, associations and other structures and persons.

The following occurred in 2016:

- CocoaAction companies assessed the participation of women in leadership positions across community and farmer organizations in Côte d'Ivoire and Ghana to design support activities for women to participate in decision making (SDG 5).
- CocoaAction companies began to monitor the school enrollment of children living in CocoaAction cocoa communities in Côte d'Ivoire and Ghana (SDG 4). **CocoaAction companies have introduced new community development components into their sustainability portfolios because of CocoaAction requirements and report initial results.**





*Form and/or train CPCs or other community- based structures or persons*

**In 2016, CocoaAction companies formed and/or began to train community based structures or people.**

CPCs (or other community-based structures or individuals) can play a key role in child labor. Where these structures do not yet exist in a community companies may support the formation of such committees. In addition, companies can provide training and support to these entities to help them fulfill their activities.

- CocoaAction members identified communities and schools in Côte d’Ivoire and Ghana to work with under CocoaAction and submitted their names and locations to the entire CocoaAction partnership.
- CocoaAction companies began income generating activities for women in cocoa communities in Côte d’Ivoire as well as in Ghana and companies are seeing preliminary results of this work.
- CocoaAction companies assessed the status of school management committees across the CocoaAction communities and companies already are actively supporting School Management Committees and schools through training and materials support.

**INDUSTRY-SUPPORTED ACTIVITY EXAMPLE:  
WOMEN’S EMPOWERMENT**

A CocoaAction company and its partner, ICI, have supported income generation activities for a women’s group in Dohoun-Konankro, Côte d’Ivoire.



Activities carried out by the group mobilized more than \$1,600 in one year of operation. The group donated a portion of these funds to a School Management Committee for the rehabilitation of classrooms built by the community.

*Build Child Labor Monitoring and Remediation Systems*

**Greater visibility into a company’s supply chain affords that company with a better understanding of what is taking place at the farm, coop and community level. When this occurs in the context of a child labor monitoring and remediation system, CocoaAction companies are favorably positioned to**

identify and remediate cases of the worst forms of child labor. In 2016, CocoaAction companies reported on Child Labor Monitoring and Remediation Systems and Child Protection coverage across the cocoa farms and communities in their sustainability programs in both Côte d'Ivoire and Ghana.

A Child Labor Monitoring and Remediation System is a mechanism for routinely seeking out, identifying and addressing child labor, whether in supply chain-based structures (such as coops) or in communities that are linked to supply-chains. All CocoaAction companies have committed to implementing a CLMRS to cover all farmers participating in the productivity portion of CocoaAction. Companies can build on existing relations within their supply chains through either a coop or farmer group structure, or through a Child Protection Committee-type structure.

### III. The Role of Monitoring and Evaluation (M&E) in CocoaAction

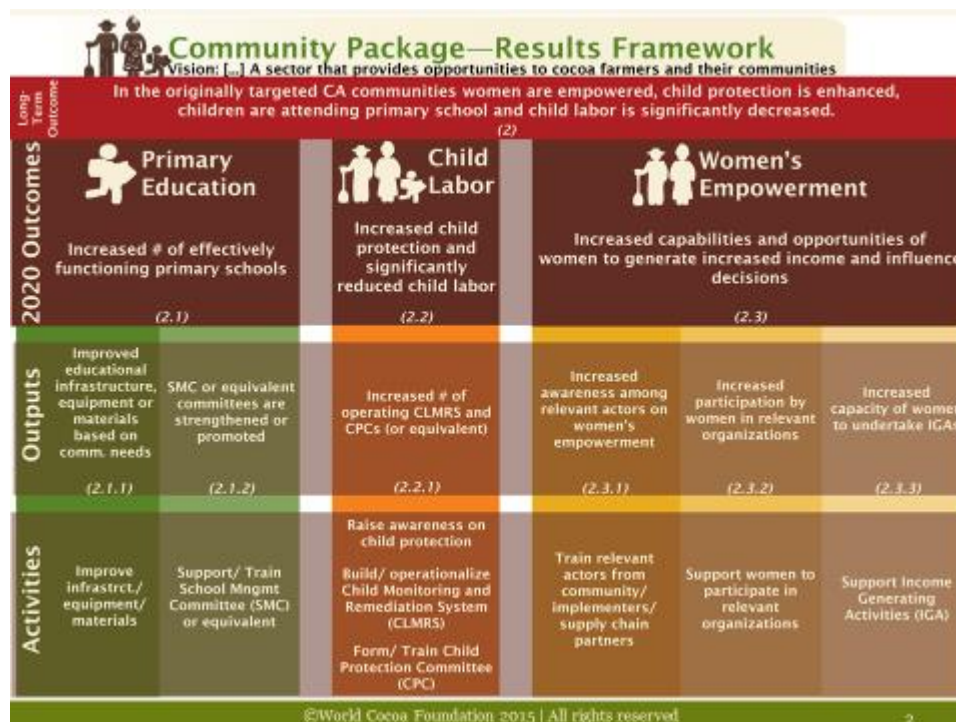
Essential to CocoaAction's success – sustaining the cocoa industry and improving the quality of life of farmers and communities in the focus countries – is the creation of and adherence to benchmarks and measurable goals. Since the inception of CocoaAction, demonstrable progress has been made among CocoaAction members regarding alignment in measuring and tracking progress toward sustainability in the cocoa value chain.



By 2016 CocoaAction companies had agreed upon a finalized common Results Framework. As a result, a set of KPIs underpin all CocoaAction activities in Côte d'Ivoire and Ghana. The KPIs were developed with input from the governments of Côte d'Ivoire and Ghana, and others with expertise in measurement systems including, but not limited to, NGO implementing partners, voluntary sustainability standards

# REPORT FROM WORLD COCOA FOUNDATION ON COCOAACTION

organizations, and international development measurement experts. Below are the desired results for CocoaAction's Community Development package:



## CocoaAction Child Labor Indicators in support of the Framework of Action and SDGs

As seen in the above table and in lock step with the Framework of Action and Sustainable Development Goals, the CocoaAction target outcome for child labor is: “Increased child protection in CocoaAction communities and significantly reduced child labor in CocoaAction farming households and CocoaAction communities” (SDG 8.7). The indicators, used to measure progress against this outcome, and which will be reported on beginning with the 2017 CLCCG report, are:

- Number / percentage of CocoaAction communities with a CPC or similar structure demonstrating effectiveness
- Number / percentage of children living in CocoaAction farmers' households participating in child labor (cocoa-related or other) as defined per ILO 138 and ILO 182
- Number / percentage of children living in non-CocoaAction farmers' households participating in child labor (cocoa-related or other) as defined by ILO 138 or ILO 182 of assisted child labor
- Number / percentage of assisted child labor cases found that are no longer in child labor (cocoa-related or other) after the assistance
- Number / percentage of CocoaAction farmers' households covered by an effectively functioning CLMRS



# REPORT FROM WORLD COCOA FOUNDATION ON COCOAACTION

<b>PRIMARY EDUCATION INDICATORS</b> 	<b>CHILD LABOR INDICATORS</b> 	<b>WOMEN'S EMPOWERMENT INDICATORS</b> 
<p># girls and boys enrolled in schools that have received CocoaAction education interventions</p> <p># and % of primary schools that have received CocoaAction interventions and are meeting specified functioning effectively requirements</p> <p># SMCs or equivalent that have received CocoaAction support that are effectively functioning</p> 	<p># and % of CocoaAction communities with a CPC or similar structure demonstrating effectiveness</p> <p># and % of children living in CocoaAction farmers' households participating in child labor (cocoa-related or other) as defined per ILO 138 and ILO 182</p> <p># and % of children living in non-CocoaAction farmers' households participating in child labor (cocoa-related or other) as defined per ILO 138 and ILO 182</p> <p># and % of CocoaAction farmers' households covered by an effectively functioning CLMRS</p> <p># and % of assisted child labor cases found that are no longer in child labor (cocoa-related or other) after the assistance</p>	<p># and % of women in CocoaAction communities who report an increased control of income</p> <p># and % of women in CocoaAction communities who report on increased income as a result of IGA</p> <p># and % of women in farmers or community organizations in CocoaAction communities contributing to decision making</p> 

## Effectiveness Criteria

Specifically related to CLMRS, companies must measure and report on the effective functioning of these systems. The following effectiveness criteria is used to determine whether CLMRS function effectively:

- Average number of hours of child labor awareness-raising per year / per community delivered by the system.
- Average number of hours of training undergone by those responsible for monitoring and remediation.
- Percentage of farmers (coop-members or community members) covered by the system.
- Average number of monitoring visits/contacts per farmer covered, per year.
- Number of child labor cases identified as a percentage of children monitored (compared to known local baselines).
- Percentage of identified child labor cases followed-up.

### INDUSTRY-SUPPORTED ACTIVITY EXAMPLE: EDUCATION SUPPORT

In 2016, a CocoaAction company working with its partner, ICI, provided 331 school kits and 567 birth certificates to children in Aboisso Department of Côte d'Ivoire, who had been identified by a CLMRS as at-risk of child labor. This will improve access to education for children of cocoa farmers/members of agricultural cooperatives in Aboisso.



- Percentage of identified child labor cases assisted (through remediation or referral).
- Percentage of assisted child labor cases no longer in child labor (cocoa-related or other) after the assistance.

#### IV. CocoaAction Overview Reporting Plan for 2017 and Beyond in line with Framework of Action and SDGs

The CocoaAction CLCCG overview report is expected to evolve over the next several years as the CocoaAction strategy is implemented and begins to produce results in line with the 2010 Framework of Action and the 2015 global Sustainable Development Goals. This year's report, and the subsequent addendum to be released in the third quarter of 2017, focuses on CocoaAction activities and outputs, beginning the community development core interventions. The 2017 overview report will present CocoaAction activities, outputs and outcomes when activities are being implemented in a larger number of communities. Throughout the reporting process CocoaAction companies will measure and self-report individually, submitting verified data to WCF. WCF will then consolidate the information received into an aggregated CocoaAction report.

Footnotes:

1. <http://www.worldcocoafoundation.org/about-wcf/cocoaaction/>
2. <http://www.cocoainitiative.org/knowledge-centre-post/policy-brief-researching-the-impact-of-increased-cocoa-yields-on-the-labour-market-and-labour-risk-in-ghana-and-cote-divoire/>

Contact Information
<p><b>Name:</b> Tim McCoy</p> <p><b>Title:</b> Vice President, Member &amp; External Relations</p> <p><b>Address:</b> World Cocoa Foundation 1411 K Street, NW, Suite 500 Washington, DC 20005</p> <p><b>Tel:</b> 202-737-7870</p> <p><b>Email:</b> tim.mccoy@worldcocoa.org</p>

# THE DECLARATION

## Declaration of Joint Action to Support Implementation of the Harkin-Engel Protocol

The United States Department of Labor, Senator Tom Harkin, Representative Eliot Engel, the Government of the Republic of Côte d'Ivoire, the Government of the Republic of Ghana, and representative of the International Chocolate and Cocoa Industry (hereinafter collectively referred to as the "Participants") do hereby:

**RECALL** the pledge made to achieve the goals of the *Protocol for the Growing and Processing of Cocoa Beans and Their Derivative Products in a Manner that Complies with ILO Convention 182 Concerning the Prohibition and Immediate Action for the Elimination of the Worst Forms of Child Labor* (hereinafter referred to as the *Harkin-Engel Protocol*) and the related Joint Statements of 2005 and 2008; and

**REAFFIRM** their commitment to financially support efforts and work in a collaborative and transparent manner to eliminate the worst forms of child labor in cocoa growing areas of Côte d'Ivoire and Ghana, including through the collection of data, provision of education and other remediation activities for children, and support for sustainable improvements in the livelihoods of the households of such children; and

**DECLARE** that, in order to accelerate work to achieve these goals and outcomes, the United States Department of Labor will commit \$10 million in FY 2010 appropriated funds, the International Chocolate and Cocoa Industry commits \$7 million in new funding over 5 years and further pledges to explore the possibility of committing an additional \$3 million for remediation activities that further these goals, and the Governments of Côte d'Ivoire and Ghana will allocate the necessary human and financial resources to support this effort.

This Joint Declaration, and the accompanying *Framework of Action to Support Implementation of the Harkin-Engel Protocol*, hereby takes effect as of this 13th day of September, 2010.

The undersigned support the *Declaration of Joint Action to Support Implementation of the Harkin-Engel Protocol* and will work with each other and the other major stakeholders to successfully execute projects in the spirit of the *Declaration* and in accordance with the attached *Framework of Action to Support Implementation of the Harkin-Engel Protocol*.



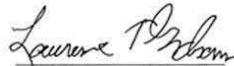
Secretary Hilda L. Solis  
United States



Minister Emile Guireoulou  
Côte d'Ivoire



Minister E.T. Mensah  
Ghana

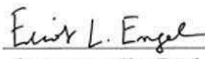


Lawrence T. Graham  
President, National Confectioners Association

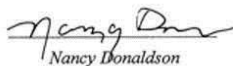
We hereby witness the commitment evidenced on September 13, 2010, through this Declaration and the accompanying *Framework of Action to Support Implementation of the Harkin-Engel Protocol*.



Senator Tom Harkin  
U.S. Senate, Iowa



Congressman Eliot Engel  
U.S. Congress, New York



Nancy Donaldson  
Director, International Labor Organization, Washington Office

## APPENDIX 2: FRAMEWORK

### Framework of Action to Support Implementation of the Harkin-Engel Protocol

The following is a Framework of Action for efforts aimed at a significant reduction in the worst forms of child labor in cocoa producing areas of Côte d'Ivoire and Ghana. The Framework is intended to support the further implementation and realization of the goals of the Harkin-Engel Protocol.

1. **Purpose:** The overarching goal of the Framework is:

*By 2020, the worst forms of child labor as defined by ILO Convention 182 in the cocoa sectors of Côte d'Ivoire and Ghana will be reduced by 70 percent in aggregate through joint efforts by key stakeholders to provide and support remediation services for children removed from the worst forms of child labor, including education and vocational training, protective measures to address issues of occupational safety and health related to cocoa production, and livelihood services for the households of children in cocoa growing communities; the establishment and implementation of a credible and transparent sector-wide monitoring system across cocoa growing regions in the two countries; and the promotion of respect for core labor standards.*

To reach this overarching goal, the Framework will support the development of thriving cocoa communities fostering safe, healthy, and productive environments for children and families through coordinated support for new or expanded initiatives in Côte d'Ivoire and Ghana in the following areas:

- a. Removal of children from the worst forms of child labor, including hazardous labor, in cocoa growing areas and provision of appropriate remediation services, including education or vocational training; or in the case of children/youth of legal working age, removal of workplace hazards and other steps necessary to bring labor conditions into conformity with national laws and international labor standards;<sup>1</sup>
- b. Prevention of children's involvement in the worst forms of child labor, including through increased access to schooling and vocational training and improvement in the quality and relevance of education;
- c. Promotion of sustainable livelihoods for the households of children in cocoa growing areas;<sup>2</sup>

---

<sup>1</sup> For the purpose of this document, remediation services are defined as removing children from hazardous or exploitative labor through the provision of direct services. This includes education and livelihood services, protective measures to address issues of occupational safety and health related to cocoa production, and social protection services for trafficking victims. Education services may take the form of formal or non-formal education and vocational training. Livelihood services improve the ability of the family to care for the child and protect the child from the WFCL. By providing protective measures to address issues of occupational safety and health related to cocoa production, youth of legal working age who are engaged in hazardous labor could be withdrawn by transitioning them into safe, acceptable work that is in conformity with both national laws and international labor standards. Children who are victims of trafficking may need to receive social protection services, including rehabilitation and repatriation services.

<sup>2</sup> For the purpose of this document, livelihood is defined as a means of living and the capabilities, assets, and activities required for it. A livelihood encompasses income, as well as social institutions, gender relations, and property rights required to support and sustain a certain standard of living. It also includes access to and benefits derived from social and public services provided by the state, such as education, health services, and other infrastructure. In turn, sustainable livelihood programs seek to create long-lasting solutions to poverty by empowering their target population and addressing their overall well-being. ([http://pdf.usaid.gov/pdf\\_docs/PNADR399.pdf](http://pdf.usaid.gov/pdf_docs/PNADR399.pdf))



## APPENDIX 2: FRAMEWORK

- d. Establishment and implementation of community-based CLMS in cocoa growing areas, linked to the provision of remediation for children identified as engaged in the worst forms of child labor; and
  - e. Continuation of nationally representative child labor surveys, recurring at least every 5 years. Nationally representative baseline data is established as the most recent data coming out of the 2008-2009 Tulane field surveys. The next nationally representative surveys in both countries will be in the field during the 2013-2014 harvest season, with a report made in 2014, and again in the field in 2018-2019, with a report in 2019. These surveys will provide comparable data for ongoing assessment of child labor prevalence in cocoa growing areas and a commitment to make publicly available the related survey methodologies, all raw data, and reports based on the findings of such surveys. In addition to such nationally representative surveys, efforts should also be made to incorporate a child labor component into existing national household surveys to support efforts to combat the worst forms of child labor nationally in each country.
2. **Key Stakeholders:** Stakeholders under this Framework are defined as follows:
- a. **Cocoa growing communities:** This group includes children in cocoa growing areas and the households of these children where efforts to promote sustainable livelihoods will address root causes of child labor.
  - b. **Producer Governments:** This group includes the national, district, and local government agencies of Côte d'Ivoire and Ghana.
  - c. **International Chocolate and Cocoa Industry:** This group includes companies participating in this Framework which are engaged in the growing of cocoa, processing of cocoa, and/or production and sale of its derivative products.
  - d. **Foreign Donors:** This group includes the U.S. Government (the U.S. Department of Labor, the U.S. Department of State, the U.S. Agency for International Development, and key Congressional Offices—Senator Tom Harkin and Representative Eliot Engel). Other donor entities, such as the European Union and other international donors, are encouraged to fund projects that will support the goals of this Framework.
  - e. **Social Partners and Civil Society:** This group includes employer and worker organizations, non-governmental organizations (NGOs), and community-based organizations in both Côte d'Ivoire and Ghana, as well the international counterparts of these groups.
  - f. **Implementing Organizations (including International Organizations and other Nongovernmental Organizations):** This group includes among others, the International Labor Organization's International Program on the Elimination of Child Labor (ILO/PEC), the ICI, the WCF, and other organizations possessing expertise related to the initiatives under this Framework and whose projects or other inputs are integrated and supportive of achievement of the Framework's goals.
3. **Financial Partners:** The key stakeholders defined above include a subset of partners, including the U.S. Government and the International Chocolate and Cocoa Industry, that have committed

## APPENDIX 2: FRAMEWORK

to provide new financial support for new or expanded interventions to achieve a significant and sustainable reduction in the worst forms of child labor in the cocoa sector of Côte d'Ivoire and Ghana and whose actions are supportive of achievement of this Framework's goals. This subset also includes the Governments of Côte d'Ivoire and Ghana, who will transparently communicate their financial and human resource commitments under this Framework to the Child Labor Cocoa Coordination Group (CLCCG) and its Principals. (See Section 6.)

It is further noted that the group of financial partners may be expanded over the life of the Framework to include other partners, such as other private sector entities, NGOs or international organizations. In order to ensure that new initiatives are supportive of the Framework's goals, proposals for new partners and their programs will be subject to review by the CLCCG and its Principals.

4. **Roles, Responsibilities and Commitments under this Framework:** This framework considers the roles, responsibilities and contributions of financial partners as noted below:
  - a. **Producer Governments:** The Producer Governments play critical roles in planning, implementing and monitoring progress toward achievement of their respective national plans that are the foundation for reducing the worst forms of child labor. The Producer Governments must ensure coherence between project efforts under this Framework and the national plans for the purposes of national and local ownership and sustainability. Producer Governments also will ensure adequate human, financial, and organizational (e.g., decision making and internal advocacy) resource capacity in appropriate government agencies, as well as working in partnership with financial partners and other key stakeholders, to provide the following services:
    - Data collection and monitoring at the community and national level through supporting a nation-wide, community-based CLMS and by developing, funding and conducting nationally representative surveys as described in this Framework;
    - Remediation for the children removed from the worst forms of child labor through the provision of education, vocational training, and by increased support for programs to improve livelihoods for the households of children in cocoa growing communities;
    - Prevention of other children from involvement in the worst forms of child labor in cocoa growing communities through the provision of education, vocational training, and increased support for programs to improve livelihoods for the households of children in cocoa growing communities;
    - Development of physical and social infrastructure, including roads, wells and schools in cocoa growing areas; and
    - Enforcement of laws intended to protect children from the worst forms of child labor.
  - b. **International Chocolate and Cocoa Industry:** The Harkin-Engel Protocol and accompanying Joint Statements of 2005 and 2008 serve as a commitment by the representatives of the International Chocolate and Cocoa Industry to carry out the industry's responsibilities to ensure that cocoa beans and their derivative products are grown and processed in a manner

## APPENDIX 2: FRAMEWORK

compliant with internationally-recognized standards on child labor. Specifically, in the Joint Statement of 2008, the International Chocolate and Cocoa Industry committed itself to “continue to support efforts to eliminate the worst forms of child labor and forced adult labor on cocoa farms and to help cocoa farmers, their families and communities by continuing to work with the national governments to ensure that the certification process, including remediation and verification are fully implemented.” It is further noted in the Joint Statement of 2008 that the International Chocolate and Cocoa Industry will work with the governments of Côte d’Ivoire and Ghana to have a sector-wide certification process “fully in place across each country’s cocoa growing sector.”

Within this Framework of Action, the International Chocolate and Cocoa Industry, in partnership with financial partners and other key stakeholders, will:

- Continue to support data collection and monitoring at the community and national level through a credible community-based CLMS.
- Through relevant local institutions and stakeholders, support the provision of appropriate remediation services for children based on the CLMS data, national survey data, and other credible sources of information, with the goal of protecting children from the worst forms of child labor in the cocoa growing areas of Ghana and Côte d’Ivoire.
- Provide sustainable livelihoods for the households of children in cocoa growing communities in order to protect children from the worst forms of child labor and ensure thriving cocoa communities.
- Provide technical advice to assist in the refinement and implementation of the ILO-IPEC project referenced as: “Towards Child Labor Free Cocoa Growing Communities through an Integrated Area Based Approach.”
- Strive to ensure their cocoa supply chains use safe and responsible labor practices, including combating the worst forms of child labor. Individual companies will inform their employees who buy or sell cocoa and its derivative products of the relevant ILO Conventions, the International Cocoa Agreement, relevant labor legislation in the two countries, the Harkin-Engel Protocol and the Framework of Action.

Reflecting their commitment to the production of cocoa and its derivative products without the involvement of the worst forms of child labor, and as an immediate pledge, the International Chocolate and Cocoa Industry is committing \$7 million to further the goals of the Harkin-Engel Protocol and the Framework of Action, of which \$2 million will support an ILO-IPEC Public-Private Partnership and \$5 million that includes the expansion of significant current industry work on cocoa which has demonstrated the value of partnerships of this nature. This funding will be spread out over a five-year period, and the amount and timing of outlays will be discussed during CLCCG consultations. The Industry is making a further pledge to explore the possibility of committing an additional \$3 million for remediation activities that further these goals.

## APPENDIX 2: FRAMEWORK

- c. **U.S. Department of Labor:** The U.S. Department of Labor will play an active role as a donor supporting projects that reduce the worst forms of child labor in the cocoa sector in West Africa, committing \$10 million in 2010 for a new, multi-year program to be implemented by ILO-IPEC that supports the efforts described in this Framework. The U.S. Department of Labor will continue to report on progress being made to address the goals of the Harkin-Engel Protocol and the goals and objectives of this Framework, with a specific emphasis on the progress made by the ILO in the program noted here. As a donor, the U.S. Department of Labor will have substantial involvement in the design and development of the project and will work in partnership with financial partners and other key stakeholders.
5. **Benefits:** By promoting improved coordination and more integrated planning, implementation, and assessment of interventions, this Framework offers a number of important benefits:
- a. For cocoa growing communities, this approach can lead to thriving cocoa communities fostering safe, healthy, and productive environments for children and families.
  - b. For Producer Governments, the approach helps to focus and coordinate assistance on meeting national goals related to the elimination of the worst forms of child labor, provision of universal basic education, poverty reduction, and employment creation. National capacity will be built in data collection, including nationally representative surveys; monitoring, including CLMS; impact assessment; and remediation.
  - c. For Financial Partners, the Framework offers a coordinated approach that will help maximize impact in target areas. Moreover, by demonstrating an effective model of cooperation, the Framework can serve as a platform for attracting increased funding from other donors, including other chocolate and cocoa companies, other manufacturers who purchase or use cocoa, chocolate and their derivative ingredients, and other international agencies with an interest in tackling the worst forms of child labor.
  - d. For the International Chocolate and Cocoa Industry, the Framework provides an integrated approach to enable the sustainable supply of cocoa in a manner consistent with the commitments made under the Harkin-Engel Protocol.
  - e. For social partners and civil society, the Framework provides opportunities for the involvement of social partners and civil society in dialogue on how best to support sustainable change.
  - f. For all stakeholders, the Framework provides mechanisms for promoting greater transparency and accountability for all parties.
6. **Governance:** In order to meet the objectives of this Framework, the participants will operate within a well designed and articulated structure of governance.
- a. Within the context of governance, it is noted that there is a significant difference between “key stakeholders” (those with an interest in the issue) and “financial partners” (those assuming a direct responsibility for the management and ultimate success of the Framework of Action). The development of governance structures will include mechanisms for

## APPENDIX 2: FRAMEWORK

stakeholders to be informed of and to comment on the governance structures, while reserving direct and strategic decision making to the financial partners.

- b. The CLCCG will serve as the initial coordination and steering group for the implementation of this Framework. The CLCCG is currently composed of (1) Principals representing the U.S. Department of Labor, the Harkin and Engel offices, the Governments of Ghana and Côte d'Ivoire, and the International Chocolate and Cocoa industry and (2) a larger working group of representatives from these organizations. It is envisaged that the CLCCG could be

### 7. **Monitoring of Progress:** Progress under the Framework will be monitored as follows:

- a. The nationally-representative surveys on child labor in cocoa will provide standardized information about the situation of the worst forms of child labor in cocoa in each country and be used to measure progress on reducing the number of children in the worst forms of child labor in the cocoa sectors of Côte d'Ivoire and Ghana.
- b. The CLCCG, in consultation with technical experts, will discuss and come to agreement on a monitoring and evaluation design for use by all participants in this Framework.
- c. The CLCCG, in consultation with technical experts, will discuss and come to agreement on a set of common indicators that clearly track interim progress towards the goal of a 70 percent reduction in the worst forms of child labor in Ghana and Côte d'Ivoire, and other key parameters that will be reported on a regular basis.
- d. In the periods between the national surveys, information from the CLMS will provide ongoing information on the child labor situation in specific communities.
- e. Individual projects launched under the Framework will measure progress towards the specific goals of the project, report on an appropriate subset of common indicators, and include transparent impact evaluations. Where feasible, the integration of randomized control trials or other rigorous evaluation methods will be used to identify interventions that are both effective and cost efficient so that they may be promoted for future replication and scaling-up.
- f. A series of milestones, or performance goals, will be developed to assess the progress being made to significantly reduce the worst forms of child labor in the cocoa sector of Côte d'Ivoire and Ghana. The benchmarks will be unique for each country and will be based on the commitments of specific action on an annual basis.
- g. A process evaluation of the Framework itself will be conducted two years after implementation of the Framework begins, and an annual review will be carried out every twelve months subsequently.

### 8. **Timeline to Launch the Framework**

- a. A Meeting of Principals will be held on September 13 to issue a Declaration of Joint Action, including this Framework, and a joint public and media announcement will be made.

## APPENDIX 2: FRAMEWORK

- b. The Principals will deposit copies of key national plans (in the case of the Governments of Côte d'Ivoire and Ghana), identify Framework points of contact, and agree on a schedule of meetings (the next to be held by December 31, 2010) to begin implementing this Framework.
- c. Meetings of the CLCCG will be held in Washington, DC and in Côte d'Ivoire and Ghana on a rotating basis. These meetings will be organized around concrete agendas to address program design, financing, governance, and other matters necessary to fully implement this Framework.

### By-laws for Governance of the Child Labor Cocoa Coordinating Group (CLCCG)

October 24, 2011

#### I. Purpose of the CLCCG

Recalling that the Framework of Action to Support Implementation of the Harkin-Engel Protocol is working to achieve the overarching goal:

*By 2020, the worst forms of child labor as defined by ILO Convention 182 in the cocoa sectors of Côte d'Ivoire and Ghana will be reduced by 70 percent in aggregate through joint efforts by key stakeholders to provide and support remediation services for children removed from the worst forms of child labor, including education and vocational training, protective measures to address issues of occupational safety and health related to cocoa production, and livelihood services for the households of children in cocoa growing communities; the establishment and implementation of a credible and transparent sector-wide monitoring system across cocoa growing regions in the two countries; and the promotion of respect for core labor standards.*

*And that in order to reach this overarching goal, the Framework will support the development of thriving cocoa communities fostering safe, healthy, and productive environments for children and families through coordinated support for new or expanded initiatives in Côte d'Ivoire and Ghana.*

The purpose of the CLCCG is to support the effective implementation of the Framework of Action and the Joint Declaration to Support Implementation of the Harkin-Engel Protocol in Ghana.

#### II. Areas of Activity and Responsibility

The CLCCG, with input from the Ivorian and Ghanaian NSCs on Child Labor and technical experts as appropriate, is responsible for the following:

1. Assessing areas of need for additional action, taking into consideration the following priority factors:
  - a. The nature, extent and geographical location of the worst forms of child labor (WFCL) in cocoa growing areas;
  - b. Past, current and planned efforts to combat the WFCL, to promote education and training opportunities and sustainable livelihoods for households, and to establish and implement child labor monitoring systems in both countries; and

## APPENDIX 3: BY-LAWS

- c. Existing gaps in current interventions or programming as identified through consultation of CLCCG members and other implementing institutions.
2. Assessing and prioritizing new investments to address these areas of need.
3. Determining, based on an established criteria,<sup>1</sup> whether funding for new or increases to existing activities or programs in Côte d'Ivoire and Ghana, as proposed by the International Chocolate and Cocoa Industry (Industry) shall be assessed:
  - a. As new resources committed by Industry under the Declaration signed on September 13, 2010;
  - b. As supportive of the overall goals or certain elements of the Framework, but not part of Industry's commitment of new resources under the Declaration signed on September 13, 2010; or
  - c. As not related to the overall Framework and therefore not part of Industry's monetary commitment under the Framework.
4. Encouraging and contributing to coordination across projects that come under the Framework, ensuring that projects under the Framework are linked to relevant national plans; and fostering coordination, to the extent possible, with projects that fall outside of the Framework but also have the potential to contribute towards the achievements of its goal. The CLCCG may develop a coordination mechanism to facilitate this effort.
5. Establishing credible **milestones** for measuring commitment and progress toward the achievement of the overarching goal of the Declaration and its accompanying Framework. The benchmarks will be unique for each country and will be based on the commitments of specific action on an annual basis.
6. Establishing in consultation with technical experts, including the ILO, a **common set of indicators**. These indicators will enable the CLCCG to both monitor specific types of interventions and track interim progress towards the Framework's overarching goal. This will include indicators for at least the following types of interventions:
  - a. Remediation services for children under the age of 18 years withdrawn from the Worst Forms of Child Labor (as defined under ILO 182);

---

<sup>1</sup> See Attachment 1: Criteria for Assessing whether New Programming Should Count Toward Industry Commitment.



- b. Sustainable education and training services provided to children under the age of 18 years as a means of preventing their involvement in the Worst Forms of Child Labor;
  - c. Efforts that raise awareness or provide ongoing sensitization, including for communities, on the Worst Forms of Child Labor (WFCL);
  - d. Efforts to promote the development, implementation, and sustainability of the Child Labor Monitoring Systems in Côte d'Ivoire and Ghana;
  - e. Supporting efforts to address workplace hazards and improve workplace safety in a sustainable manner; and
  - f. Sustainable livelihood services provided to households of children under the age of 18 years with the intent of supporting the withdrawal or prevention of children from involvement in the WFCL. Such livelihood services may include support for improvement in household income, provision of social protection services, or improvement of community infrastructure that either reduces reliance on the labor of children or supports a potential opportunity for increased income of the aforementioned households.
- 7. **Monitoring progress** being made toward achieving milestones.
  - 8. **Monitoring and assessing the effectiveness and impact** of programs implemented under the Framework to combat the WFCL. The CLCCG will review progress reports from projects included under the Framework and may provide feedback as appropriate.
  - 9. **Convening an annual briefing** to inform representatives of civil society and other key stakeholders about the status of efforts under the Framework.

### III. CLCCG Membership

- 1. The membership of the CLCCG shall serve without remuneration, fees or honorariums.
- 2. The CLCCG shall consist of the two types of Members: Principals and Working Group Members. The CLCCG shall also recognize Key Stakeholders. (See Section III, 2, C)
  - a. The **Principals** of the CLCCG shall consist of the Minister responsible for Labor for the Governments of Côte d'Ivoire and Ghana, and, at a minimum, the following entities:
    - 1. The Secretary of Labor for the U.S. Department of Labor;
    - 2. Senator Tom Harkin;

## APPENDIX 3: BY-LAWS

3. Congressman Eliot Engel; and
    4. A representative of the International Chocolate and Cocoa Industry.
  - b. A Principal may designate a representative to act on their behalf, including for decision-making purposes.
  - c. **Working Group Members** shall conduct the day-to-day business of the CLCCG, engaging in discussions that lead to decisions by the Principals. Working Group Members shall be made up of representatives of Financial Partners as defined within the Framework. Each Working Group entity may include up to 7 members in its delegation, consisting of those parties necessary for it to consistently and effectively engage in the day-to-day business of the CLCCG, with the membership of each delegation determined by its Principal.
3. Point of Contact: Each of the aforementioned CLCCG entities shall designate a Point of Contact (POC) for efforts under the Framework. If any entity changes its designated POC, it must send the name and contact information to the Secretariat. See Section IV(3).
    - a. The POC will be available to coordinate with the Secretariat on matters related to the CLCCG, the Declaration and the Framework.
    - b. The POC will update the Principals and other CLCCG Working Group Members on relevant initiatives and maintain official records of relevant CLCCG documents, including notes of previous meetings and shared foundation documents, including the national plans of action against the worst forms of child labor.
    - c. In order to inform the CLCCG's discussion of areas outlined in Section II(1), the POC shall be responsible for conveying pertinent information and assessments to the CLCCG.
  4. Decisions concerning the **inclusion of additional entities** on CLCCG must be approved by a consensus of the Principals of the CLCCG as outlined in section 2.a. above. In order to consider a motion to expand the CLCCG, the entity offering a new organization for membership must provide the name and relevant background information about the proposed new entity(s) to each Principal of the CLCCG at least 30 calendar days prior to a scheduled meeting. All Principals of the CLCCG must have the opportunity to provide their feedback on the proposal before consensus can be reached.

### IV. Structure of the CLCCG

1. Meetings of the CLCCG will be chaired by a representative of the host government when the

## APPENDIX 3: BY-LAWS

meeting takes place in Côte d'Ivoire or Ghana. Other meetings will be chaired on a rotating basis by the other Principals of the CLCCG or as otherwise determined by the members.

2. The host for a given meeting shall be responsible for providing interpretation services as needed and a venue for the meeting. Each entity of the CLCCG is responsible for its own expenses, such as travel, accommodation and per diem, if applicable.
3. The CLCCG may also decide to select one of the Financial Partners to serve as a Secretariat to facilitate operations and regular meetings. The Secretariat would serve a term of one year, unless extended by an agreement reached through consensus of the Principals and have the following responsibilities:
  - a. The Secretariat shall work with the Chair to facilitate a given meeting, including reviewing summary notes from the preceding meeting, reviewing the meeting agenda, monitoring time and movement of the group through a given agenda.
  - b. In the absence of the Chair, the Principals may appoint from among the membership a person to assume duties of the chair.
  - c. The Secretariat shall be responsible for developing and maintaining summary notes of the meetings and distributing copies of summary notes to CLCCG members.
  - d. The Secretariat shall seek input from members to determine the date, time and agenda for meetings.

### V. Meetings

1. CLCCG Working Group Members shall hold regular meetings, in person or via video conference or teleconference, on at least a quarterly basis.
2. Meetings where attendance in person is preferred will be hosted on a rotating basis in the United States, Côte d'Ivoire and Ghana or in another mutually agreed upon location.
3. Special meetings or teleconference calls of either the Principals or the Working Group Members may be held at any time as determined necessary by the Principals or the Working Group Members.
4. The Secretariat shall distribute meeting agendas at least 10 calendar days prior to a scheduled quarterly meeting or 3 calendar days prior to interim meetings should such meetings be determined as necessary by the members. Issues which require decisions will

be clearly noted in the agenda.

5. Translations and maintenance of documents are the responsibility of each entity. The function of maintaining relevant records is the role of the POC for each entity.
6. For meetings of the principals or working group that make decisions regarding CLCCG Areas of Activity and Responsibility (Section II) in either Côte d'Ivoire or Ghana, a representative of that government at the appropriate level must be present.

### VI. Committees and Technical Meetings

1. The Principals of the CLCCG may appoint standing and ad hoc committees as needed and include outside experts as warranted. The role of such committees and ad hoc experts shall be advisory in nature and shall not be a constraint or a mandate on the Principals of the CLCCG.
2. The Principals and/or Working Group Members of the CLCCG may request meetings on technical matters that include outside experts. Principals of the CLCCG will seek to reach consensus on such meeting requests, with clarity on meeting objectives. In the case that consensus can not be reached at least 2/3s of Principals must agree for a meeting to be held. Such meetings shall be organized and may include outside experts to discuss methods for evaluation of project interventions which may include discussions of emerging methodologies or assessing impact on hard-to-reach populations.

### VII. Decision-making

1. The CLCCG will endeavor to be a consensus-based group. In the event that a consensus on a particular issue cannot be reached within the allotted time scheduled for discussions on the matter, a vote may be called for.
2. If a vote is called for, the following will apply:
  - a. Passage of a motion requires a 2/3 vote of the Principals of the CLCCG.
  - b. Any Principal of the CLCCG who is unable to attend a meeting in person or participate in a conference call may designate another Principal of the CLCCG to serve as their proxy. To do so, they need to inform the Secretariat and all other Principals of the CLCCG prior to the meeting. Given that all entities will have 10 calendar days notice of an issue coming before the CLCCG for consideration at a quarterly meeting or 3 calendar days notice prior to interim meetings, it is the responsibility of each entity to ensure that they can attend meetings or designate a proxy. If the appropriate notice has been given and a Principal fails to attend a meeting or designate a proxy, the group may choose to consider an issue in the absence of the Principal.
  - c. Determinations by the CLCCG on whether to consider individual investments or

## APPENDIX 3: BY-LAWS

proposed investments in programming as part of the new resources committed by the International Chocolate and Cocoa Industry under the Declaration must be based on a decision of the Principals as described for in this section.

### VIII. Conflict of Interest

Any member of the CLCCG who has a financial, personal, or official interest in, or conflict (or appearance of a conflict) with any matter pending before the CLCCG, of such nature that it prevents or may prevent that member from acting on the matter in an impartial manner, must offer to voluntarily excuse him/herself and refrain from participating in the discussion and voting on said item.

### IX. Confidential Treatment of Business Proprietary Information

CLCCG Principals and Working Group Members must comply with applicable national laws governing the release of confidential information. The CLCCG will establish procedures to protect the confidentiality of any business proprietary information presented or discussed during the course of its activities. CLCCG members shall not retain copies of business proprietary information that they may have reviewed, nor disclose proprietary information to any person. Notwithstanding the foregoing sentence, CLCCG Principals and Working Group members may discuss such information with their immediate project team, provided that the project team adheres to the same restrictions concerning proprietary information.

### X. Communications

The CLCCG will establish communication procedures regarding the public dissemination of information related to the work of the CLCCG, including, but not limited to, criteria utilized in program evaluation, statements regarding progress toward agreed upon milestones, distribution of meeting summaries and decisions taken by the CLCCG.

### XI. Amendments

These by-laws may be amended by a consensus of the Principals of the CLCCG at any meeting (in person or via telephone/teleconference), provided that each Principal of the CLCCG is present and is provided a copy of the proposed amendment(s) at least 10 calendar days prior to said meeting.

### ATTACHMENT 1

#### Criteria for Assessing whether New Programming Should Count Toward Industry Commitment

Funding committed to the ILO-IPEC Program, as specified in the Framework of Action which accompanies the signed Declaration, is considered to be within the Framework and does not require further review described in this section. Notwithstanding, the ILO-IPEC Program should provide its final project document to the CLCCG, indicating how it will promote a coordinated strategy for combating the WFCL in cocoa growing areas.

Before any determination may be made by the CLCCG on whether to consider individual company investments in company specific projects or investments made by companies in support of relevant Trade Association or Foundation programming as part of the new resources committed to by the International Chocolate and Cocoa Industry under the Declaration, the following criteria must be met:

1. As a general principle, given funding commitments must **not** have been undertaken prior to the signing of the Declaration on September 13, 2010. However, each company working within the Framework of Action will be given the opportunity to discuss specific circumstances of programming that were planned after discussion began on the Concept Paper issued by USDOL in June 2010. A company must have notified the CLCCG of its intent to bring it forward such a proposal by December 31, 2010. The CLCCG will review such projects intended to be implemented under the Framework and issue a determination on whether such projects meet the timing exception.
2. The funding must represent an increase in industry's overall commitment for a given program; and
3. The funding must represent an increase in a given company's commitment over the previous calendar year's baseline funding of the identified program.

Once the factors above have been confirmed, the CLCCG shall use the following questions to help guide their determination as to whether an individual investment or proposed investment in programming will be considered part of the new resources committed to by the International Chocolate and Cocoa Industry under the Declaration:

1. Would a proposed new program or a proposed new investment in an ongoing program support the goals outlined in the Framework, including promoting a coordinated strategy for combating the WFCL in cocoa growing areas? This should be demonstrated by addressing at least the following for one or more of the identified categories:
  - a. For livelihood, education, and social protection projects: Would the given program target the withdrawal from, or prevention of, children in the WFCL?



## APPENDIX 3: BY-LAWS

- b. For livelihood, education, and social protection projects: Would the program target households of working children or children at risk of the WFCL?
  - c. For livelihood, education, and social protection projects: Would the program direct resources to remediation for households of children withdrawn from the WFCL, including as a result of CLMS referral efforts?
  - d. For capacity building projects: Would the program work with the relevant Government agencies and ILO to promote implementation of the CLMS in cocoa-growing areas?
  - e. Would the program direct resources to raise awareness or provide sensitization on the worst forms of child labor, including for social partners?
  - f. For infrastructure projects: Would the program direct resources for infrastructure improvements, which would improve the situation of children so as to promote access to schooling or otherwise contribute to the reduction of the worst forms of child labor?
  - g. For education projects: Would the program assess impact on children in terms of educational participation and work status?
  - h. For livelihood projects: Would the program assess impact on children's households in terms of income and sustainable livelihoods?
2. Would a given program target specific gaps in current services and support relevant national plans in the country where the interventions would take place?
3. Would a given program prioritize target areas to consider one or all of the following:
- a. based on areas of greatest need for remediation of children in WFCL? (For example, areas selected based on the results of surveys or information collected by the GCLMS or child protection committees.)
  - b. based on support national plans that will contribute to a reduction of the WFCL in cocoa growing areas?
  - c. in a way that supports the coordinated approach to combating the WFCL in cocoa growing areas outlined in the Framework?
4. Would a given program be sustainable?
5. Would the project promote and sustain good practices linked to reducing the worst forms of child labor, including by the assessment of impact and the scaling-up of efforts?

## APPENDIX 3: BY-LAWS

6. Would a given program seek to coordinate with other efforts under the Framework (including the relevant IPEC projects: (1) *Eliminating the Worst Forms of Child Labour in West Africa and Strengthening Sub-Regional Cooperation through ECOWAS*; (2) *Towards Child Labour Free Cocoa Growing Communities through an Integrated Area Based Approach*; and (3) the designated Industry-IPEC Private-Public Partnership Program) in order to leverage resources and enhance short term and long term impact of these efforts?
7. Would a given program be willing to work with the CLCCG to incorporate common indicators into its monitoring, evaluation and reporting framework?
8. Would a given program make available to the CLCCG and the public information, on funds allocated for the project, project target areas, regular progress reports, updates on funding expenditures, and evaluation reports?