

Proactive

Outreach

Employer engagement

Direct Effective

**TAA NAVIGATORS**

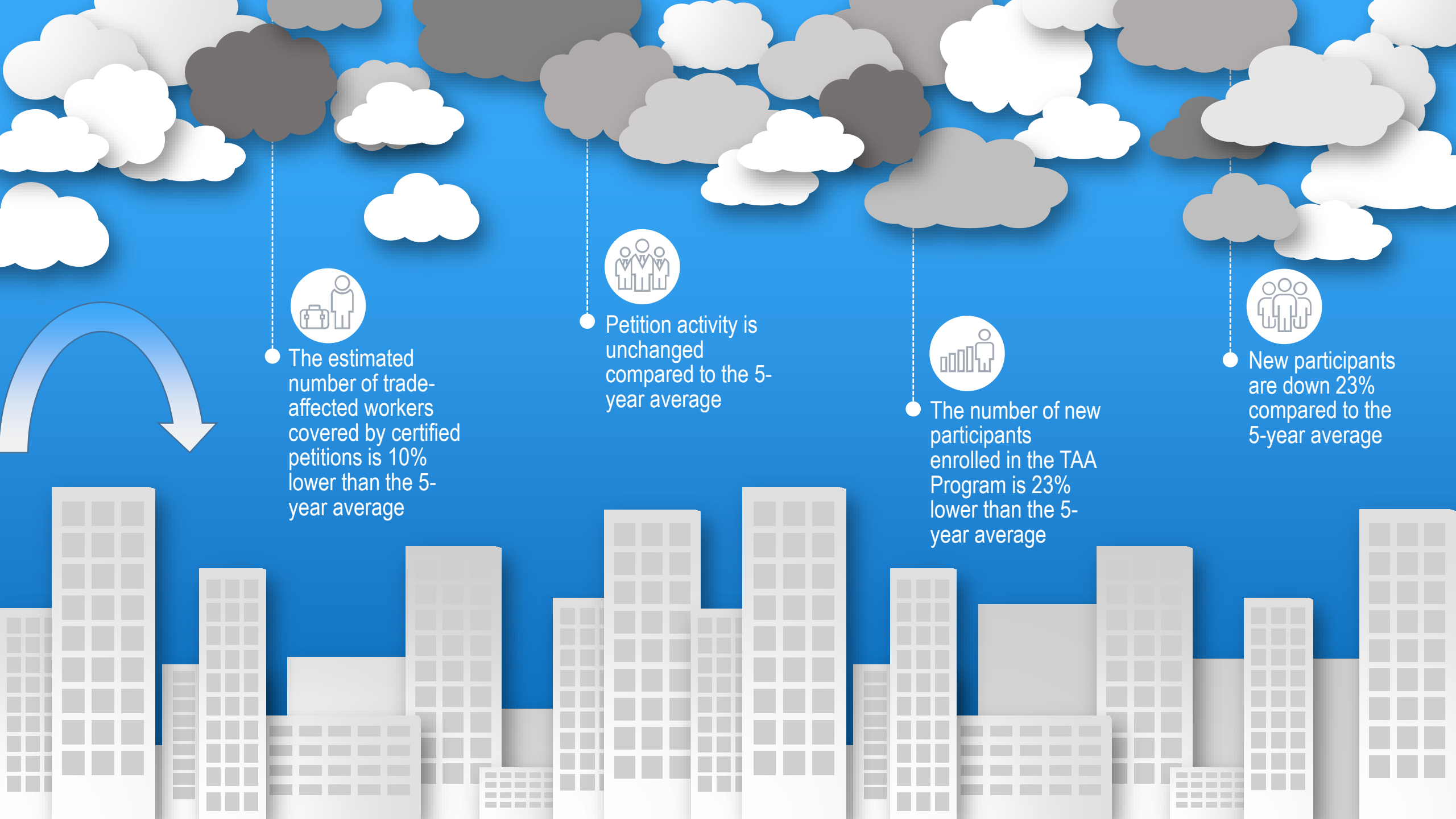
Early intervention

Goals Partnerships

Co-enrollment Quality

Strategy

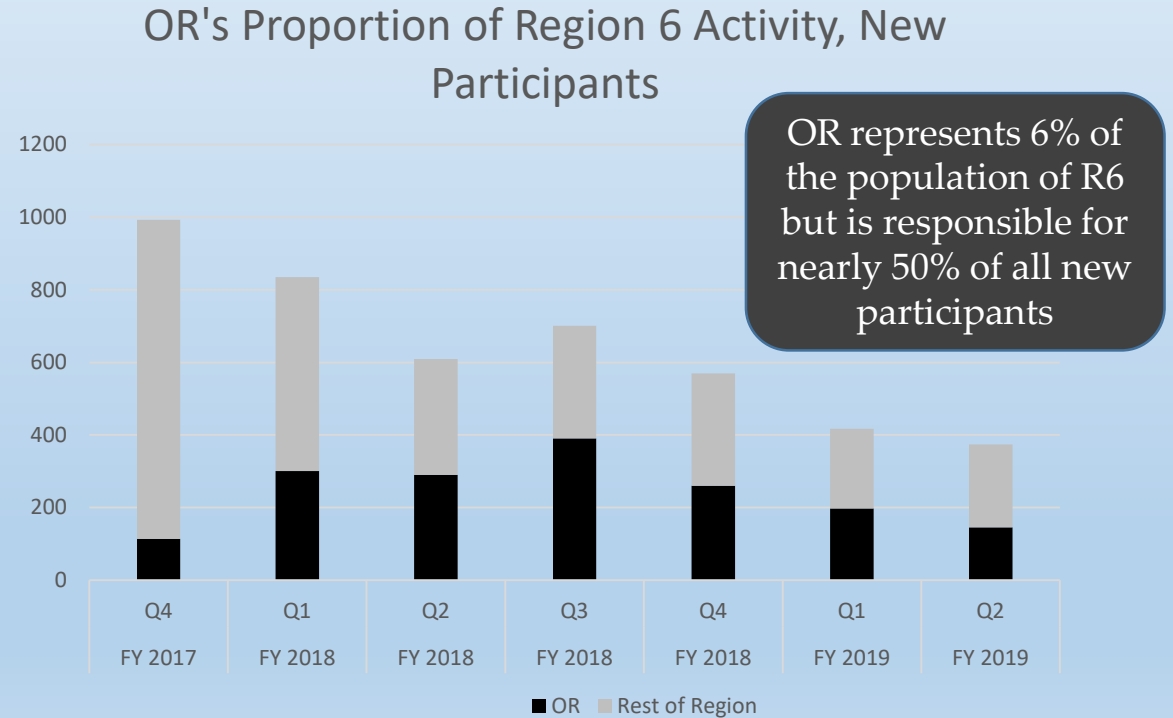
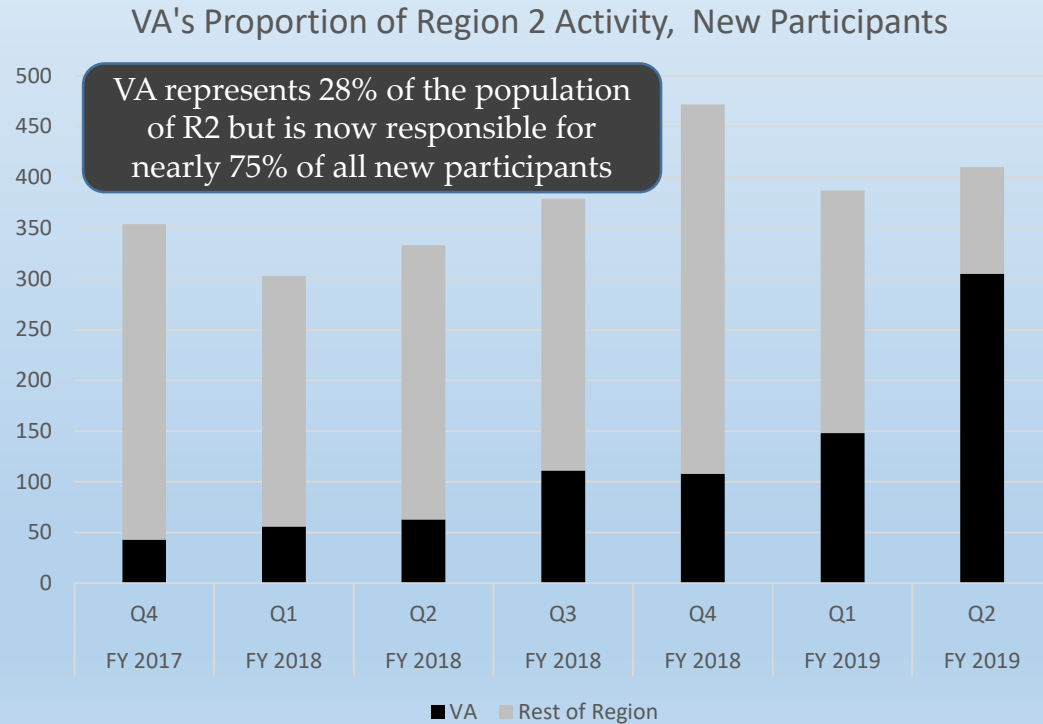
Targeted



# TAA Navigators = New Participant Growth

The black bar in each of these charts shows the proportion of new participants from Virginia (Region 2) and Oregon (Region 6)

Both states are responsible for a disproportionately **high number** of new participants since implementing the TAA Navigator model

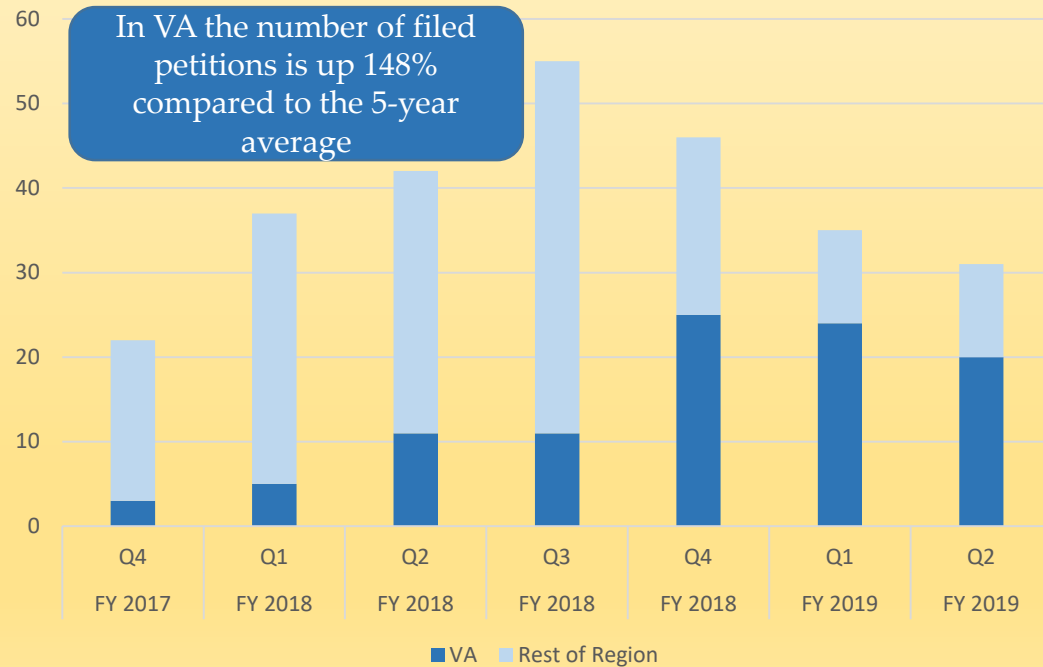


# TAA Navigators = Increased Petition Filing

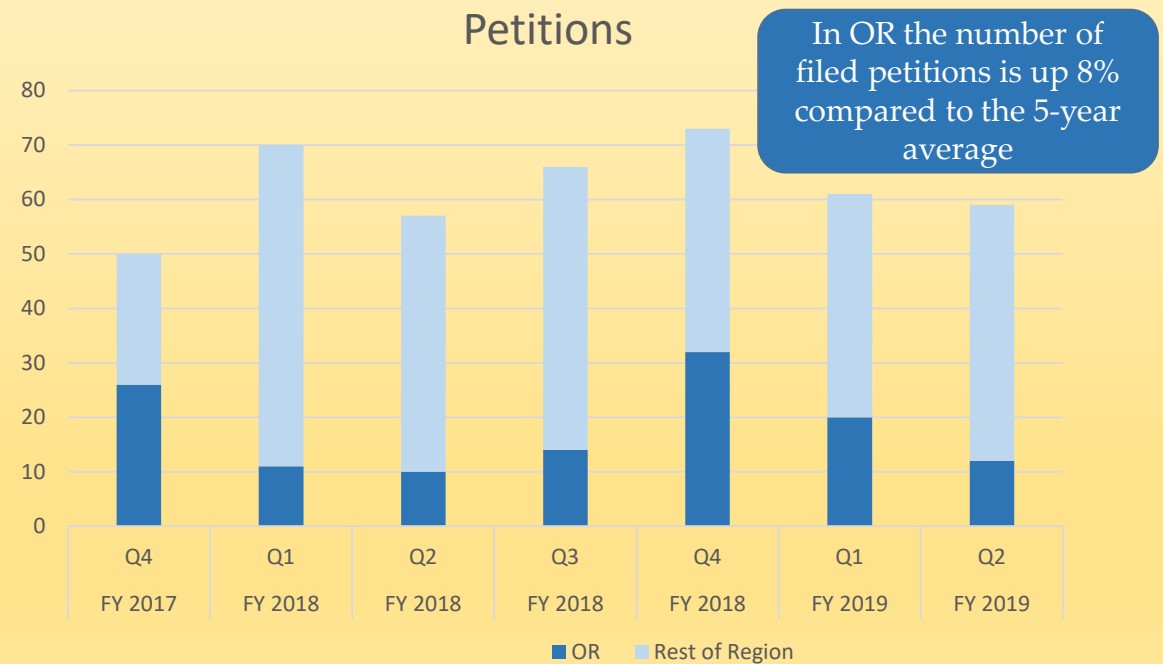
Petitions filed by Virginia and Oregon represent 10% of all petitions filed in FY 2018 even though these 2 states only represent 3.85% of the US population

This has happened during a time of economic growth and lower unemployment and shows that even in a robust economy, there are trade-affected populations for whom petitions should be filed

VA's Proportion of Region 2 Activity, New Petitions



OR's Proportion of Region 6 Activity, New Petitions



# Overview of Service Delivery

Dislocated Worker

- Learns of layoffs
- Connects with employer to engage in services
- Communicates workers needs and reasons for lay off

- Investigates layoffs
- Communicates results of investigation
- Often files petitions on behalf of affected workers
- Once certified, notifies employer and workers

- Interprets assessments
- Provides career guidance
- Approves services and benefits
- Carries primary caseload
- Refers to TAA Navigator for assistance on college campuses
- Refers to TAA Navigator for reemployment services
- Refers to TAA Navigator for OJT's

Employed Participant

Rapid Response

NAV

Petition Coord

NAV

Case Manager

NAV

- Active partner to Rapid Response
- If layoffs heard first, notifies both local Rapid Response and TAA Petition Coordinator

- Once certified, facilitates information sessions for eligible workers
- Facilitates assessment workshops
- Refers to case managers

- Provides job development
- Scouts OJT opportunities
- Provides reemployment services

# TAA NAVIGATOR CONNECTIONS

STATES WHO HAVE  
ALREADY IMPLEMENTED OR  
ARE IMPLEMENTING  
ASPECTS OF THE TAA  
NAVIGATOR MODEL  
INCLUDE: AR, CT, IN,  
MO, NJ, NY, OR, RI, VA

PEER TO PEER  
NETWORK



**\$148,618,037.39**

NEARLY \$147 MILLION OF  
FY 2017 UNSPENT  
FUNDS ARE PROJECTED TO  
BE RETURNED TO  
TREASURY (AS OF MAY 31, 2019)

USE TAA FUNDS TO  
IMPLEMENT



NATIONAL OTAA STAFF  
OR REGIONAL TRADE  
COORDINATORS ARE  
AVAILABLE TO PROVIDE  
TECHNICAL ASSISTANCE TO  
STATES WHO NEED HELP!

TECHNICAL  
ASSISTANCE

SEE NAVIGATORS IN  
ACTION

- REQUEST A  
PRESENTATION FROM  
OREGON
- VISIT A STATE THAT  
HAS IMPLEMENTED  
THE TAA NAVIGATOR  
MODEL



TAA COMMUNITY OF  
PRACTICE

