

# OFFICE OF FOREIGN LABOR CERTIFICATION

## H-1B Temporary Specialty Occupations Labor Condition Program – Selected Statistics, FY 2017 YTD

### Applications Received

YTD	Q1	Q2	Q3	Q4	% Change FY16
505,005	83,167	324,254	97,584	--	3.6%

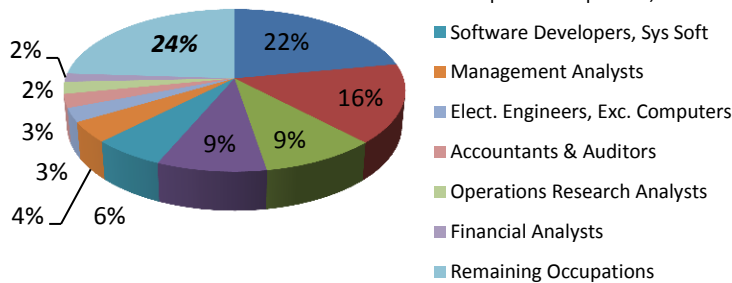
### Applications Processed

Determinations	YTD	Q1	Q2	Q3	Q4
<b>Total Determinations</b>	528,146	93,522	326,905	107,719	--
- Certified	482,373	80,395	305,769	96,209	--
- Denied	6,989	1,369	4,143	1,477	--
- Withdrawn	38,784	11,758	16,993	10,033	--
<b>Positions Requested</b>	981,498	173,002	626,271	182,225	--
<b>Positions Certified</b>	944,106	166,292	601,711	176,103	--
<b>Processed Timely</b>	100%	100%	100%	100%	--

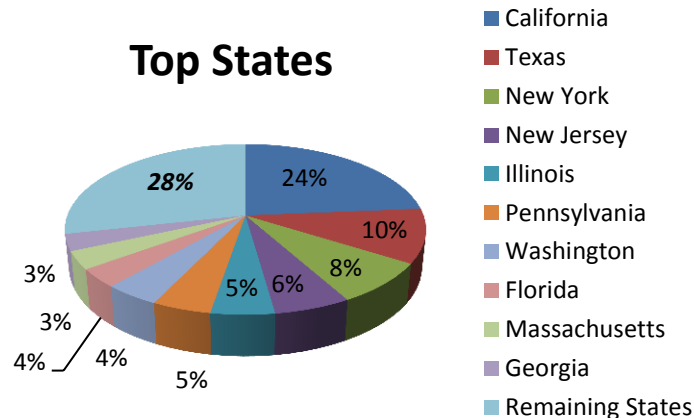
### Review of Positions Certified FY 2017TD (% of total certified FY 2017TD)

Review of Positions Certified FY 2017TD (% of total certified FY 2017TD)			
<b>Top 10 Occupations (based on SOC Codes)</b>	Computer Systems Analysts	208,362	22.1%
	Software Developers, Applications	148,957	15.8%
	Computer Programmers	89,964	9.5%
	Computer Occupations, All Others	85,416	9.0%
	Software Developers, System Software	56,228	6.0%
	Management Analysts	38,791	4.1%
	Electronics Engineers, Except Computer	26,013	2.8%
	Accountants and Auditors	25,461	2.7%
	Operations Research Analysts	22,472	2.4%
	Financial Analysts	15,761	1.7%
<b>Top 10 States</b>	California	223,529	23.7%
	Texas	96,532	10.2%
	New York	74,898	7.9%
	New Jersey	55,916	5.9%
	Illinois	46,255	4.9%
	Pennsylvania	42,988	4.6%
	Washington	40,495	4.3%
	Florida	33,196	3.5%
	Massachusetts	32,102	3.4%
	Georgia	29,765	3.2%
<b>Top 10 Employers</b>	Deloitte Consulting, LLP	80,632	8.5%
	Cognizant Technology Solutions, US Corp.	45,650	4.8%
	HCL America, Inc.	28,768	3.0%
	Apple, Inc.	26,074	2.8%
	Deloitte & Touche, LLP	22,729	2.4%
	Mphasis Corporation	19,373	2.1%
	Infosys Limited	17,051	1.8%
	Tata Consultancy Services Limited	16,288	1.7%
	Capgemini America, Inc.	13,070	1.4%
	Wipro Limited	12,325	1.3%

### Top Occupations



### Top States



<sup>1</sup> Please note that applications received will not match posted disclosure data as that data set only includes adjudicated applications.