



# News Release

Connect with DOL at  
<http://social.dol.gov!>



U.S. Department of Labor  
Employment and Training Administration  
Washington, D.C.  
Release Number: USDL 14-1089-NAT

Program Contacts  
Tom Stengle (202) 693-2991  
Tony Sznoluch (202) 693-3176  
Media Contact (202) 693-4676

TRANSMISSION OF MATERIALS IN THIS RELEASE IS EMBARGOED UNTIL  
**8:30 A.M. (Eastern) Thursday, June 12 2014**

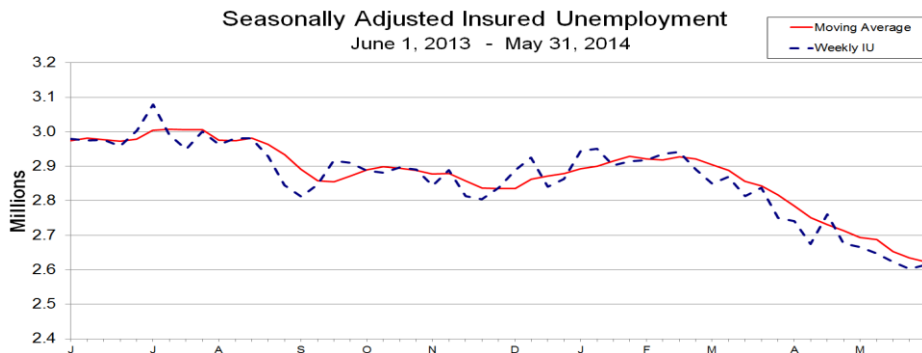
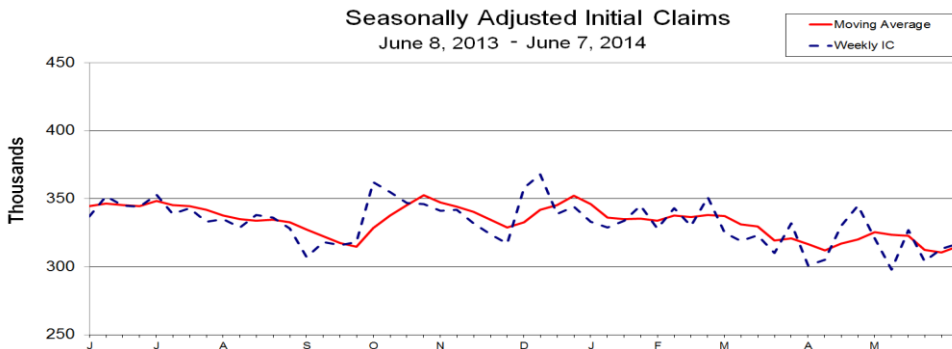
## UNEMPLOYMENT INSURANCE WEEKLY CLAIMS

### SEASONALLY ADJUSTED DATA

In the week ending June 7, the advance figure for seasonally adjusted **initial claims** was 317,000, an increase of 4,000 from the previous week's revised level. The previous week's level was revised up by 1,000 from 312,000 to 313,000. The 4-week moving average was 315,250, an increase of 4,750 from the previous week's revised average. The previous week's average was revised up by 250 from 310,250 to 310,500.

There were no special factors impacting this week's initial claims.

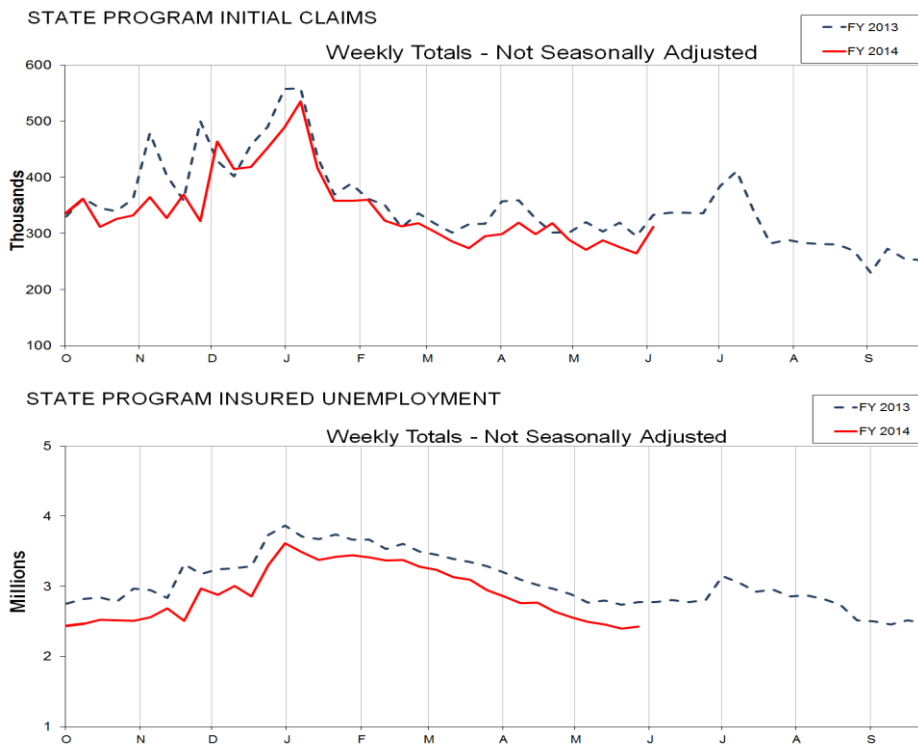
The advance seasonally adjusted **insured unemployment rate** was 2.0 percent for the week ending May 31, unchanged from the previous week's unrevised rate. The advance number for seasonally adjusted **insured unemployment** during the week ending May 31 was 2,614,000, an increase of 11,000 from the previous week's unrevised level of 2,603,000. The 4-week moving average was 2,622,000, a decrease of 13,000 from the previous week's unrevised average of 2,635,000. This is the lowest level for this average since November 24, 2007 when it was 2,616,750.



## UNADJUSTED DATA

The advance number of actual initial claims under state programs, unadjusted, totaled 312,129 in the week ending June 7, an increase of 47,996 (or 18.2 percent) from the previous week. The seasonal factors had expected an increase of 44,439 (or 16.8 percent) from the previous week. There were 332,964 initial claims in the comparable week in 2013.

The advance unadjusted insured unemployment rate was 1.8 percent during the week ending May 31, unchanged from the prior week. The advance unadjusted number for persons claiming UI benefits in state programs totaled 2,423,492, an increase of 29,114 (or 1.2 percent) from the preceding week. The seasonal factors had expected an increase of 18,218 (or 0.8 percent) from the previous week. A year earlier the rate was 2.1 percent and the volume was 2,771,143.



The total number of people claiming benefits in all programs for the week ending May 24 was 2,447,338, a decrease of 66,040 from the previous week. There were 4,507,942 persons claiming benefits in all programs in the comparable week in 2013.

No state was triggered "on" the Extended Benefits program during the week ending May 24.

Initial claims for UI benefits filed by former Federal civilian employees totaled 1,348 in the week ending May 31, an increase of 281 from the prior week. There were 1,535 initial claims filed by newly discharged veterans, an increase of 87 from the preceding week.

There were 11,371 former Federal civilian employees claiming UI benefits for the week ending May 24, a decrease of 935 from the previous week. Newly discharged veterans claiming benefits totaled 23,719, a decrease of 985 from the prior week.

The highest insured unemployment rates in the week ending May 24 were in Alaska (3.9), Puerto Rico (3.1), Connecticut (2.8), New Jersey (2.8), California (2.7), Pennsylvania (2.7), Nevada (2.6), Illinois (2.4), Massachusetts (2.3), Oregon (2.2), and Rhode Island (2.2).

The largest increases in initial claims for the week ending May 31 were in Tennessee (+949), Puerto Rico (+787), Illinois (+654), New Mexico (+626), and Washington (+547), while the largest decreases were in California (-1,944), New Jersey (-1,654), Pennsylvania (-1,416), Massachusetts (-1,152), and North Carolina (-1,037).

---

UNEMPLOYMENT INSURANCE DATA FOR REGULAR STATE PROGRAMS

---

<b>WEEK ENDING</b>	<b>June 7</b>	<b>May 31</b>	<b>Change</b>	<b>May 24</b>	<b><u>Prior Year</u><sup>1</sup></b>
Initial Claims (SA)	317,000	313,000	+4,000	304,000	337,000
Initial Claims (NSA)	312,129	264,133	+47,996	275,412	332,964
4-Wk Moving Average (SA)	315,250	310,500	+4,750	312,500	344,500
<b>WEEK ENDING</b>	<b>May 31</b>	<b>May 24</b>	<b>Change</b>	<b>May 17</b>	<b><u>Prior Year</u><sup>1</sup></b>
Insured Unemployment (SA)	2,614,000	2,603,000	+11,000	2,623,000	2,980,000
Insured Unemployment (NSA)	2,423,492	2,394,378	+29,114	2,455,022	2,771,143
4-Wk Moving Average (SA)	2,622,000	2,635,000	-13,000	2,653,250	2,974,000
<u>Insured Unemployment Rate (SA)</u> <sup>2</sup>	2.0%	2.0%	0.0	2.0%	2.3%
<u>Insured Unemployment Rate (NSA)</u> <sup>2</sup>	1.8%	1.8%	0.0	1.9%	2.1%

---

INITIAL CLAIMS FILED IN FEDERAL PROGRAMS (UNADJUSTED)

---

<b>WEEK ENDING</b>	<b>May 31</b>	<b>May 24</b>	<b>Change</b>	<b><u>Prior Year</u><sup>1</sup></b>
Federal Employees (UCFE)	1,348	1,067	+281	1,240
Newly Discharged Veterans (UCX)	1,535	1,448	+87	1,882

---

PERSONS CLAIMING UI BENEFITS IN ALL PROGRAMS (UNADJUSTED)

---

<b>WEEK ENDING</b>	<b>May 24</b>	<b>May 17</b>	<b>Change</b>	<b><u>Prior Year</u><sup>1</sup></b>
Regular State	2,390,008	2,449,765	-59,757	2,729,827
Federal Employees	11,371	12,306	-935	16,286
Newly Discharged Veterans	23,719	24,704	-985	34,430
<u>Extended Benefits</u> <sup>3</sup>	132	102	+30	387
<u>State Additional Benefits</u> <sup>4</sup>	8,292	9,306	-1,014	4,713
<u>STC / Workshare</u> <sup>5</sup>	13,816	17,195	-3,379	18,841
<u>TOTAL</u> <sup>6</sup>	2,447,338	2,513,378	-66,040	4,507,942

FOOTNOTES

SA - Seasonally Adjusted Data, NSA - Not Seasonally Adjusted Data

1. Prior year is comparable to most recent data.
2. Most recent week used covered employment of 131,532,656 as denominator.
3. Information on the EB program can be found here: [EB Program information](#)
4. Some states maintain additional benefit programs for those claimants who exhaust regular, extended and emergency benefits. Information on states that participate, and the extent of benefits paid, can be found starting on page 4-5 of this link: [Extensions and Special Programs PDF](#)
5. Information on STC/Worksharing can be found starting on page 4-9 of the following link: [Extensions and Special Programs PDF](#)
6. Prior Year Total includes Emergency Unemployment Compensation (EUC08) claimants.

---

**UNADJUSTED INITIAL CLAIMS FOR WEEK ENDED MAY 31, 2014**

---

**STATES WITH A DECREASE OF MORE THAN 1,000**

---

<b>State</b>	<b>Change</b>	<b>State Supplied Comment</b>
CA	-1,944	No comment.
NJ	-1,654	Fewer layoffs in the administrative, support, waste management, and remediation services, manufacturing, trade, and accommodation and food services industries.
PA	-1,416	Fewer layoffs in the food services and manufacturing industries.
MA	-1,152	Fewer layoffs in the accommodation and food services, trade, and professional services industries.
NC	-1,037	No comment.

**STATES WITH AN INCREASE OF MORE THAN 1,000**

---

<b>State</b>	<b>Change</b>	<b>State Supplied Comment</b>
None		

---

## Seasonally Adjusted US Weekly UI Claims (in thousands)

Week Ending	Change from			Insured Unemployment	Change from			IUR
	Initial Claims	Prior Week	4-Week Average		Prior Week	4-Week Average		
June 1, 2013	347	-3	349.00	2980	1	2974.00	2.3	
June 8, 2013	337	-10	344.50	2975	-5	2982.00	2.3	
June 15, 2013	352	15	346.50	2977	2	2977.75	2.3	
June 22, 2013	345	-7	345.25	2959	-18	2972.75	2.3	
June 29, 2013	344	-1	344.50	3003	44	2978.50	2.3	
July 6, 2013	353	9	348.50	3079	76	3004.50	2.4	
July 13, 2013	339	-14	345.25	2991	-88	3008.00	2.3	
July 20, 2013	343	4	344.75	2950	-41	3005.75	2.3	
July 27, 2013	333	-10	342.00	3001	51	3005.25	2.3	
August 3, 2013	335	2	337.50	2963	-38	2976.25	2.3	
August 10, 2013	329	-6	335.00	2981	18	2973.75	2.3	
August 17, 2013	338	9	333.75	2981	0	2981.50	2.3	
August 24, 2013	336	-2	334.50	2928	-53	2963.25	2.3	
August 31, 2013	328	-8	332.75	2845	-83	2933.75	2.2	
September 7, 2013	307	-21	327.25	2812	-33	2891.50	2.2	
September 14, 2013	318	11	322.25	2847	35	2858.00	2.2	
September 21, 2013	316	-2	317.25	2916	69	2855.00	2.2	
September 28, 2013	318	2	314.75	2910	-6	2871.25	2.2	
October 5, 2013	362	44	328.50	2888	-22	2890.25	2.2	
October 12, 2013	355	-7	337.75	2881	-7	2898.75	2.2	
October 19, 2013	347	-8	345.50	2896	15	2893.75	2.2	
October 26, 2013	346	-1	352.50	2890	-6	2888.75	2.2	
November 2, 2013	341	-5	347.25	2843	-47	2877.50	2.2	
November 9, 2013	342	1	344.00	2889	46	2879.50	2.2	
November 16, 2013	332	-10	340.25	2813	-76	2858.75	2.2	
November 23, 2013	324	-8	334.75	2804	-9	2837.25	2.2	
November 30, 2013	317	-7	328.75	2837	33	2835.75	2.2	
December 7, 2013	358	41	332.75	2887	50	2835.25	2.2	
December 14, 2013	368	10	341.75	2925	38	2863.25	2.2	
December 21, 2013	339	-29	345.50	2840	-85	2872.25	2.2	
December 28, 2013	344	5	352.25	2863	23	2878.75	2.2	
January 4, 2014	333	-11	346.00	2945	82	2893.25	2.2	
January 11, 2014	329	-4	336.25	2951	6	2899.75	2.3	
January 18, 2014	334	5	335.00	2903	-48	2915.50	2.2	
January 25, 2014	345	11	335.25	2915	12	2928.50	2.2	
February 1, 2014	328	-17	334.00	2918	3	2921.75	2.2	
February 8, 2014	343	15	337.50	2936	18	2918.00	2.2	
February 15, 2014	330	-13	336.50	2941	5	2927.50	2.2	
February 22, 2014	351	21	338.00	2890	-51	2921.25	2.2	
March 1, 2014	325	-26	337.25	2850	-40	2904.25	2.2	
March 8, 2014	319	-6	331.25	2869	19	2887.50	2.2	
March 15, 2014	323	4	329.50	2814	-55	2855.75	2.1	
March 22, 2014	310	-13	319.25	2838	24	2842.75	2.2	
March 29, 2014	332	22	321.00	2750	-88	2817.75	2.1	
April 5, 2014	301	-31	316.50	2741	-9	2785.75	2.1	
April 12, 2014	305	4	312.00	2674	-67	2750.75	2.0	
April 19, 2014	330	25	317.00	2761	87	2731.50	2.1	
April 26, 2014	345	15	320.25	2676	-85	2713.00	2.0	
May 3, 2014	321	-24	325.25	2666	-10	2694.25	2.0	
May 10, 2014	298	-23	323.50	2648	-18	2687.75	2.0	
May 17, 2014	327	29	322.75	2623	-25	2653.25	2.0	
May 24, 2014	304	-23	312.50	2603	-20	2635.00	2.0	
May 31, 2014	313	9	310.50	2614	11	2622.00	2.0	
June 7, 2014	317	4	315.25					

Initial Claims Filed During Week Ended May 31  
INITIAL CLAIMS

Insured Unemployment For Week Ended May 24  
INSURED UNEMPLOYMENT

STATE	CHANGE FROM						CHANGE FROM					ALL PROGRAMS EXCLUDING RAILROAD RETIREMENT
	STATE	LAST WEEK	YEAR AGO	UCFE <sup>1</sup>	UCX <sup>1</sup>	STATE	(%) <sup>2</sup>	LAST WEEK	YEAR AGO	UCFE <sup>1</sup>	UCX <sup>1</sup>	
Alabama	4241	468	-416	18	23	27167	1.5	83	-5126	126	260	27553
Alaska	1396	-113	-246	6	7	12347	3.9	-1188	-1532	94	98	12539
Arizona	5469	168	104	94	5	40287	1.7	-315	-561	188	289	40764
Arkansas	2818	-71	-596	9	19	21912	1.9	-339	-5451	95	188	22195
California	51167	-1944	5422	269	258	402159	2.7	-28953	-20792	1962	4306	408445
Colorado	2506	-275	-254	9	51	36644	1.6	-237	-2127	239	1006	37889
Connecticut	2669	-757	-181	7	15	44616	2.8	-540	-4047	77	195	44888
Delaware	608	-28	-250	0	1	8022	2.0	977	-443	29	49	8101
District of Columbia	364	-10	-377	7	0	9786	1.9	-106	-654	337	19	10144
Florida	11521	-797	646	23	115	91197	1.2	-1903	-20019	373	770	92340
Georgia	7625	-232	-1389	35	58	45765	1.2	824	-14272	321	847	46933
Hawaii	1587	-53	-225	5	22	9883	1.7	-105	-1184	123	216	10222
Idaho	971	-248	-370	4	7	9051	1.5	-552	-1814	46	73	9170
Illinois	10352	654	-3245	16	20	131646	2.4	-7900	-9589	484	707	132837
Indiana	3564	-538	-1257	9	20	31327	1.1	-1075	-11116	243	249	31819
Iowa	2135	-326	-700	5	6	17202	1.2	-512	-4196	63	113	17378
Kansas	2695	256	-651	5	7	20139	1.5	-125	-2614	204	255	20598
Kentucky	3329	158	198	13	10	25627	1.5	-892	-6342	136	501	26264
Louisiana	2976	-9	-330	9	14	19576	1.1	628	-3071	78	119	19773
Maine	902	-71	-169	0	0	10067	1.8	-516	-1209	27	45	10139
Maryland	3910	-607	-542	58	13	48744	2.0	-306	-3513	504	404	49654
Massachusetts	5303	-1152	61	9	25	74312	2.3	630	-5063	240	402	74954
Michigan	6582	-172	-1553	16	32	82733	2.1	3732	6396	156	466	83355
Minnesota	3563	-83	-1049	9	7	38667	1.5	-1923	-6940	87	253	39007
Mississippi	3019	81	-281	11	6	19772	1.9	646	-5069	165	122	20059
Missouri	6345	-34	-1311	59	17	37829	1.5	652	-9103	242	192	38263
Montana	866	13	-797	10	3	6919	1.6	-816	-2558	93	82	7094
Nebraska	1473	153	-296	5	4	7198	0.8	19	-2102	27	35	7260
Nevada	2996	-17	-455	7	14	29013	2.6	-331	-1636	149	245	29407
New Hampshire	697	-92	-51	0	2	6686	1.1	-167	-1150	10	17	6713
New Jersey	6207	-1654	-1431	16	25	105793	2.8	-4624	-7477	243	516	106653
New Mexico	1948	626	56	20	12	15607	2.1	87	-760	88	143	15838
New York	17649	-574	-2686	40	73	173038	2.0	-2653	-34768	676	1137	174851
North Carolina	4622	-1037	-5555	7	40	53067	1.4	-795	-36512	175	729	53971
North Dakota	323	20	-209	118	0	1645	0.4	-142	-908	19	13	1677
Ohio	8227	-856	-735	6	53	66799	1.3	-691	-12032	170	647	67616
Oklahoma	1588	-55	-378	4	14	16110	1.1	-59	-4072	79	198	16387
Oregon	3981	-510	-1956	25	23	35530	2.2	-825	-8620	322	323	36175
Pennsylvania	15847	-1416	-2509	63	76	148278	2.7	-2858	-8048	624	1032	149934
Puerto Rico	3324	787	307	5	9	28161	3.1	515	-13868	92	286	28539
Rhode Island	788	-46	31	4	3	9646	2.2	-341	-323	41	56	9743
South Carolina	3099	-259	-472	1	24	17952	1.0	153	-11437	61	179	18192
South Dakota	278	7	-71	153	0	1351	0.3	-68	-565	31	7	1389
Tennessee	5497	949	-1066	7	19	29955	1.1	-74	-11237	123	276	30354
Texas	15735	-960	523	73	230	149155	1.4	-692	-8691	736	3061	152959
Utah	1272	-28	-426	32	9	11816	1.0	-369	-2214	119	106	12041
Vermont	400	-173	-84	0	2	4764	1.6	-349	-935	11	22	4797
Virgin Islands	29	-9	-28	0	1	784	2.1	-16	-236	4	6	794
Virginia	3968	-334	-394	11	0	35335	1.0	-613	-5878	310	857	36502
Washington	6930	547	-938	27	120	56154	2.0	-1340	-7927	288	1276	57718
West Virginia	1083	-122	-104	2	6	13094	1.9	-1413	-1647	79	99	13272
Wisconsin	7364	-481	-1688	7	11	50748	1.9	-2474	-13950	144	183	51076
Wyoming	325	-23	-102	0	4	3303	1.2	-393	-1202	18	44	3365
Totals	264133	-11279	-30475	1348	1535	2394378	1.8	-60644	-340204	11371	23719	2429600

Figures Appearing In columns showing Over-The-Week Changes reflect all revisions in data for prior week submitted by State agencies.

1. The Unemployment Compensation program for Federal Employees (UCFE) and the Unemployment Compensation for Ex-servicemembers (UCX) exclude claims filed jointly under other programs to avoid duplication.
2. Rate is not seasonally adjusted. The source of US total covered employment is BLS.

## TECHNICAL NOTES

This news release presents the weekly unemployment insurance (UI) claims reported by each state's unemployment insurance program offices. These claims may be used for monitoring workload volume, assessing state program operations and for assessing labor market conditions. States initially report claims directly taken by the state liable for the benefit payments, regardless of where the claimant who filed the claim resided. These are the basis for the advance initial claims and continued claims reported each week. These data come from ETA 538, Advance Weekly Initial and Continued Claims Report. The following week initial claims and continued claims are revised based on a second reporting by states that reflect the claimants by state of residence. These data come from the ETA 539, Weekly Claims and Extended Benefits Trigger Data Report.

### A. Initial Claims

An initial claim is a claim filed by an unemployed individual after a separation from an employer. The claimant requests a determination of basic eligibility for the UI program. When an initial claim is filed with a state, certain programmatic activities take place and these result in activity counts including the count of initial claims.

The count of U.S. initial claims for unemployment insurance is a leading economic indicator because it is an indication of emerging labor market conditions in the country. However, these are weekly administrative data which are difficult to seasonally adjust, making the series subject to some volatility.

### B. Continued Weeks Claimed

A person who has already filed an initial claim and who has experienced a week of unemployment then files a continued claim to claim benefits for that week of unemployment. Continued claims are also referred to as insured unemployment.

The count of U.S. continued weeks claimed is also a good indicator of labor market conditions. Continued claims reflect the current number of insured unemployed workers filing for UI benefits in the nation. While continued claims are not a leading indicator (they roughly coincide with economic cycles at their peaks and lag at cycle troughs), they provide confirming evidence of the direction of the U.S. economy.

### C. Seasonal Adjustments and Annual Revisions

Over the course of a year, the weekly changes in the levels of initial claims and continued claims undergo regularly occurring fluctuations. These fluctuations may result from seasonal changes in weather, major holidays, the opening and closing of schools, or other similar events. Because these seasonal events follow a more or less regular pattern each year, their influence on the level of a series can be tempered by adjusting for regular seasonal variation. These adjustments make trend and cycle developments easier to spot.

At the beginning of each calendar year, the Bureau of Labor Statistics provides the Employment and Training Administration (ETA) with a set of seasonal factors to apply to the unadjusted data during that year.

Concurrent with the implementation and release of the new seasonal factors, ETA incorporates revisions to the UI claims historical series caused by updates to the unadjusted data.

[Weekly Claims Archives](#)  
[Weekly Claims Data](#)

U.S. Department of Labor news materials are accessible at <http://www.dol.gov>. The Department's [Reasonable Accommodation Resource Center](#) converts Departmental information and documents into alternative formats, which include Braille and large print. For alternative format requests, please contact the Department at (202) 693-7828 (voice) or (800) 877-8339 (federal relay).