



News Release

Connect with DOL at <https://blog.dol.gov>



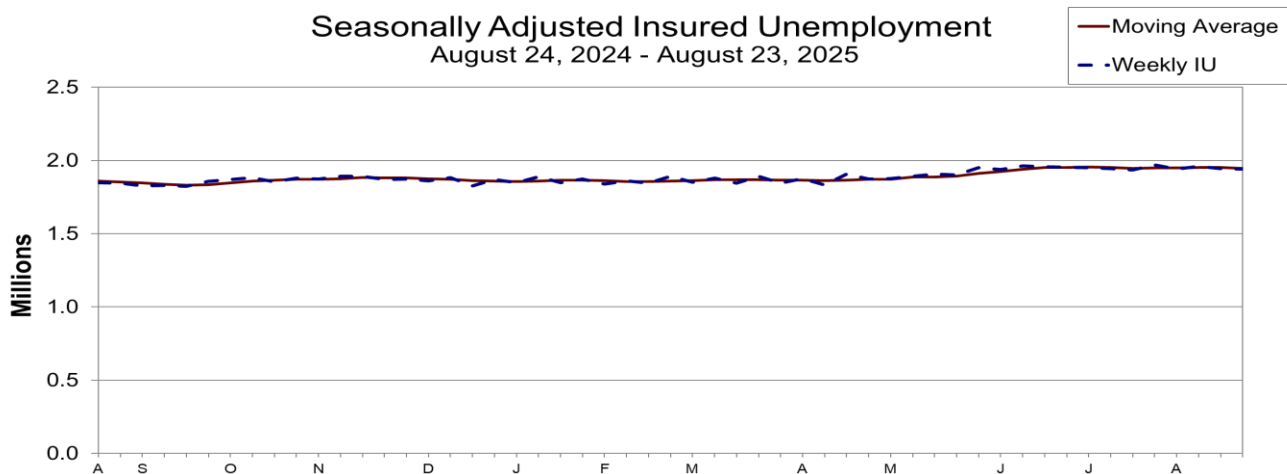
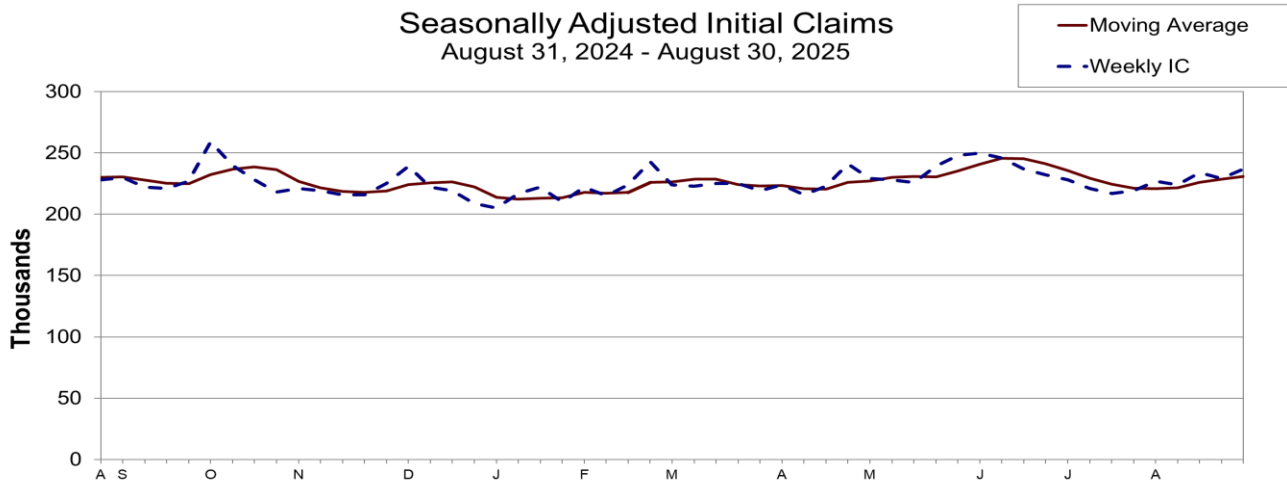
TRANSMISSION OF MATERIALS IN THIS RELEASE IS EMBARGOED UNTIL
8:30 A.M. (Eastern) Thursday, September 4, 2025

UNEMPLOYMENT INSURANCE WEEKLY CLAIMS

SEASONALLY ADJUSTED DATA

In the week ending August 30, the advance figure for seasonally adjusted **initial claims** was 237,000, an increase of 8,000 from the previous week's unrevised level of 229,000. The 4-week moving average was 231,000, an increase of 2,500 from the previous week's unrevised average of 228,500.

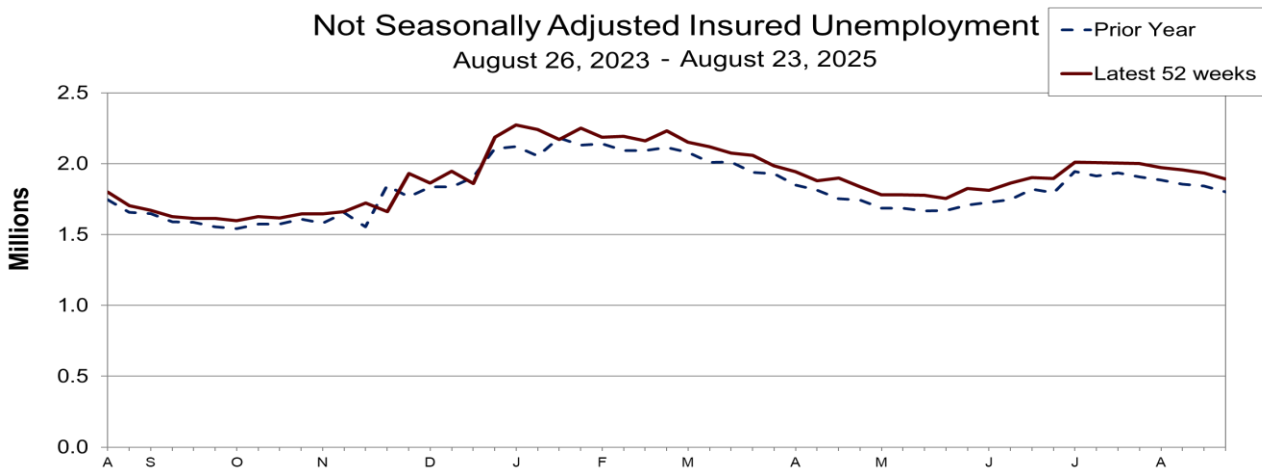
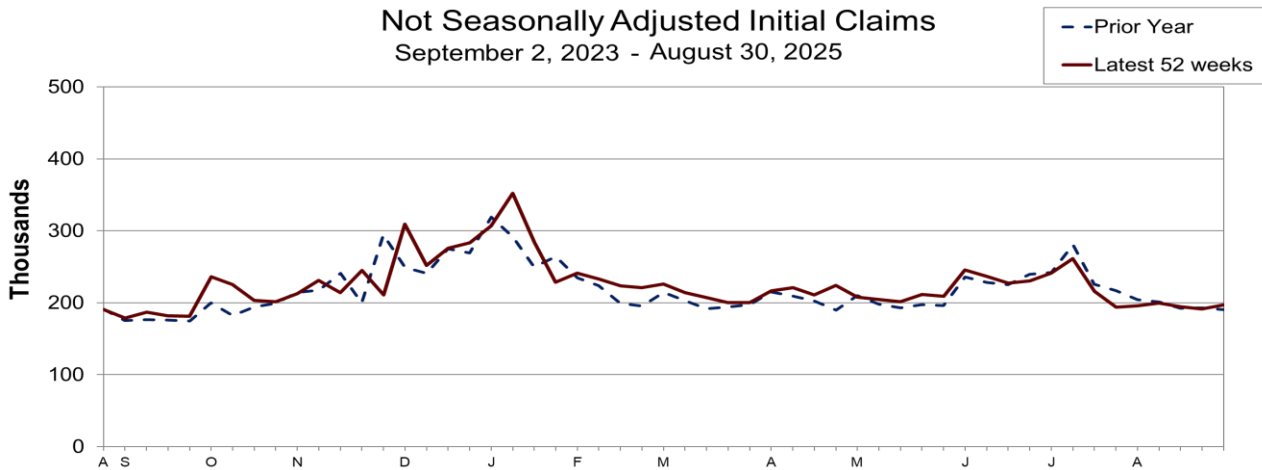
The advance seasonally adjusted **insured unemployment rate** was 1.3 percent for the week ending August 23, unchanged from the previous week's unrevised rate. The advance number for seasonally adjusted **insured unemployment** during the week ending August 23 was 1,940,000, a decrease of 4,000 from the previous week's revised level. The previous week's level was revised down by 10,000 from 1,954,000 to 1,944,000. The 4-week moving average was 1,946,750, a decrease of 7,000 from the previous week's revised average. The previous week's average was revised down by 2,500 from 1,956,250 to 1,953,750.



UNADJUSTED DATA

The advance number of actual initial claims under state programs, unadjusted, totaled 196,999 in the week ending August 30, an increase of 5,791 (or 3.0 percent) from the previous week. The seasonal factors had expected a decrease of 687 (or -0.4 percent) from the previous week. There were 190,631 initial claims in the comparable week in 2024.

The advance unadjusted insured unemployment rate was 1.2 percent during the week ending August 23, a decrease of 0.1 percentage point from the prior week. The advance unadjusted level of insured unemployment in state programs totaled 1,893,104, a decrease of 41,252 (or -2.1 percent) from the preceding week. The seasonal factors had expected a decrease of 36,937 (or -1.9 percent) from the previous week. A year earlier the rate was 1.2 percent and the volume was 1,800,462.



The total number of continued weeks claimed for benefits in all programs for the week ending August 16 was 1,966,139, a decrease of 21,225 from the previous week. There were 1,867,777 weekly claims filed for benefits in all programs in the comparable week in 2024.

No state was triggered "on" the Extended Benefits program during the week ending August 16.

Initial claims for UI benefits filed by former Federal civilian employees totaled 515 in the week ending August 23, a decrease of 73 from the prior week. There were 359 initial claims filed by newly discharged veterans, a decrease of 49 from the preceding week.

There were 8,128 continued weeks claimed filed by former Federal civilian employees the week ending August 16, a decrease of 328 from the previous week. Newly discharged veterans claiming benefits totaled 4,718, an increase of 65 from the prior week.

The highest insured unemployment rates in the week ending August 16 were in New Jersey (2.8), Rhode Island (2.6), Puerto Rico (2.3), Massachusetts (2.2), Minnesota (2.1), Washington (2.1), California (2.0), District of Columbia (2.0), Connecticut (1.9), Oregon (1.9), and Pennsylvania (1.9).

The largest increases in initial claims for the week ending August 23 were in New York (+1,430), Texas (+1,230), Illinois (+509), Missouri (+206), and Hawaii (+119), while the largest decreases were in Iowa (-1,235), Virginia (-857), Maryland (-562), Pennsylvania (-482), and Connecticut (-455).

UNEMPLOYMENT INSURANCE DATA FOR REGULAR STATE PROGRAMS

WEEK ENDING	August 30	August 23	Change	August 16	Prior Year¹
Initial Claims (SA)	237,000	229,000	+8,000	234,000	228,000
Initial Claims (NSA)	196,999	191,208	+5,791	194,217	190,631
4-Wk Moving Average (SA)	231,000	228,500	+2,500	226,000	230,000

WEEK ENDING	August 23	August 16	Change	August 9	Prior Year¹
Insured Unemployment (SA)	1,940,000	1,944,000	-4,000	1,961,000	1,849,000
Insured Unemployment (NSA)	1,893,104	1,934,356	-41,252	1,955,063	1,800,462
4-Wk Moving Average (SA)	1,946,750	1,953,750	-7,000	1,951,750	1,858,750
Insured Unemployment Rate (SA) ²	1.3%	1.3%	0.0	1.3%	1.2%
Insured Unemployment Rate (NSA) ²	1.2%	1.3%	-0.1	1.3%	1.2%

INITIAL CLAIMS FILED IN FEDERAL PROGRAMS (UNADJUSTED)

WEEK ENDING	August 23	August 16	Change	Prior Year¹
Federal Employees (UCFE)	515	588	-73	306
Newly Discharged Veterans (UCX)	359	408	-49	390

CONTINUED WEEKS CLAIMED FILED FOR UI BENEFITS IN ALL PROGRAMS (UNADJUSTED)

WEEK ENDING	August 16	August 9	Change	Prior Year¹
Regular State	1,926,584	1,948,334	-21,750	1,837,274
Federal Employees	8,128	8,456	-328	4,307
Newly Discharged Veterans	4,718	4,653	+65	4,538
Extended Benefits ³	40	44	-4	208
State Additional Benefits ⁴	2,443	2,522	-79	2,158
STC / Workshare ⁵	24,226	23,355	+871	19,292
TOTAL	1,966,139	1,987,364	-21,225	1,867,777

FOOTNOTES

SA - Seasonally Adjusted Data, NSA - Not Seasonally Adjusted Data Continued weeks claimed represent all weeks of benefits claimed during the week being reported, and do not represent weeks claimed by unique individuals.

1. Prior year is comparable to most recent data.
2. Most recent week used covered employment of 152,830,813 as denominator.
3. Information on the EB program can be found here: [EB Program information](#)
4. Some states maintain additional benefit programs for those claimants who exhaust regular benefits, and when applicable, extended benefits. Information on states that participate, and the extent of benefits paid, can be found starting on page 4-5 of this link: [Extensions and Special Programs PDF](#)
5. Information on STC/Worksharing can be found starting on page 4-11 of the following link: [Extensions and Special Programs PDF](#)

Advance State Claims - Not Seasonally Adjusted

STATE	Initial Claims Filed During Week Ended August 30			Insured Unemployment For Week Ended August 23		
	Advance	Prior Wk	Change	Advance	Prior Wk	Change
Alabama	1,846	1,935	-89	8,267	9,462	-1,195
Alaska	553	424	129	3,247	3,389	-142
Arizona	3,099	3,309	-210	32,074	34,230	-2,156
Arkansas	1,168	1,122	46	6,627	7,507	-880
California **	39,182	37,834	1,348	371,926	366,156	5,770
Colorado	2,730	2,687	43	30,675	30,525	150
Connecticut	6,253	3,304	2,949	31,907	31,919	-12
Delaware	261	243	18	6,273	5,852	421
District of Columbia	673	643	30	12,322	11,394	928
Florida	5,576	6,177	-601	34,126	37,064	-2,938
Georgia	4,155	4,616	-461	26,408	28,147	-1,739
Hawaii *	886	956	-70	6,043	5,815	228
Idaho	804	796	8	4,545	5,146	-601
Illinois	11,273	9,911	1,362	98,334	101,774	-3,440
Indiana	2,374	2,653	-279	19,669	20,093	-424
Iowa	1,522	1,390	132	8,303	10,295	-1,992
Kansas	1,266	1,045	221	9,878	7,630	2,248
Kentucky	1,598	4,487	-2,889	10,742	10,768	-26
Louisiana	1,617	1,635	-18	8,044	10,016	-1,972
Maine	477	428	49	5,077	5,348	-271
Maryland	1,965	1,902	63	29,650	30,446	-796
Massachusetts	5,019	4,309	710	76,929	79,765	-2,836
Michigan	5,413	5,073	340	48,141	51,429	-3,288
Minnesota	3,059	3,174	-115	60,428	61,100	-672
Mississippi	1,255	925	330	6,398	7,378	-980
Missouri	2,233	2,518	-285	16,767	19,554	-2,787
Montana	383	418	-35	3,881	4,176	-295
Nebraska	945	579	366	4,697	5,009	-312
Nevada	2,610	2,765	-155	26,553	26,346	207
New Hampshire	279	430	-151	3,886	4,678	-792
New Jersey	8,536	9,037	-501	116,974	116,115	859
New Mexico	706	752	-46	10,162	10,151	11
New York	16,594	14,790	1,804	168,390	164,669	3,721
North Carolina	2,734	3,154	-420	20,182	21,998	-1,816
North Dakota	272	222	50	2,198	2,151	47
Ohio	4,938	5,007	-69	44,835	46,373	-1,538
Oklahoma	1,318	1,368	-50	10,779	11,223	-444
Oregon	4,249	3,788	461	37,779	36,821	958
Pennsylvania	8,630	9,201	-571	103,728	112,573	-8,845
Puerto Rico	1,243	1,213	30	8,878	21,158	-12,280
Rhode Island	718	734	-16	12,070	12,538	-468
South Carolina	1,766	1,920	-154	14,721	15,521	-800
South Dakota	156	139	17	1,118	1,179	-61
Tennessee	5,725	2,819	2,906	16,463	16,715	-252
Texas	16,716	17,006	-290	170,097	172,359	-2,262
Utah	1,332	1,424	-92	11,818	11,994	-176
Vermont	182	261	-79	2,543	2,585	-42
Virgin Islands	50	68	-18	302	246	56
Virginia	2,377	2,289	88	21,619	21,559	60
Washington	4,914	4,835	79	77,012	73,241	3,771
West Virginia	671	651	20	6,492	6,458	34
Wisconsin	2,460	2,598	-138	21,434	22,708	-1,274
Wyoming	238	244	-6	1,693	1,610	83
US Total	196,999	191,208	5,791	1,893,104	1,934,356	-41,252

Note: Advance claims are not directly comparable to claims reported in prior weeks. Advance claims are reported by the state liable for paying the unemployment compensation, whereas previous weeks reported claims reflect claimants by state of residence. In addition, claims reported as "workshare equivalent" in the previous week are added to the advance claims as a proxy for the current week's "workshare equivalent" activity.

*Denotes OUI estimate.

**Denotes state estimate.

Seasonally Adjusted US Weekly UI Claims (in thousands)

Week Ending	Initial Claims	Change from		Insured Unemployment	Change from		IUR
		Prior Week	4-Week Average		Prior Week	4-Week Average	
August 24, 2024	232	0	231.50	1,849	-15	1,858.75	1.2
August 31, 2024	228	-4	230.00	1,845	-4	1,854.25	1.2
September 7, 2024	230	2	230.50	1,827	-18	1,846.25	1.2
September 14, 2024	222	-8	228.00	1,831	4	1,838.00	1.2
September 21, 2024	221	-1	225.25	1,825	-6	1,832.00	1.2
September 28, 2024	227	6	225.00	1,858	33	1,835.25	1.2
October 5, 2024	259	32	232.25	1,869	11	1,845.75	1.2
October 12, 2024	240	-19	236.75	1,884	15	1,859.00	1.2
October 19, 2024	228	-12	238.50	1,855	-29	1,866.50	1.2
October 26, 2024	218	-10	236.25	1,880	25	1,872.00	1.2
November 2, 2024	221	3	226.75	1,872	-8	1,872.75	1.2
November 9, 2024	219	-2	221.50	1,892	20	1,874.75	1.2
November 16, 2024	216	-3	218.50	1,892	0	1,884.00	1.2
November 23, 2024	216	0	218.00	1,871	-21	1,881.75	1.2
November 30, 2024	225	9	219.00	1,873	2	1,882.00	1.2
December 7, 2024	239	14	224.00	1,862	-11	1,874.50	1.2
December 14, 2024	222	-17	225.50	1,882	20	1,872.00	1.2
December 21, 2024	219	-3	226.25	1,828	-54	1,861.25	1.2
December 28, 2024	209	-10	222.25	1,871	43	1,860.75	1.2
January 4, 2025	205	-4	213.75	1,850	-21	1,857.75	1.2
January 11, 2025	217	12	212.50	1,888	38	1,859.25	1.2
January 18, 2025	222	5	213.25	1,849	-39	1,864.50	1.2
January 25, 2025	210	-12	213.50	1,874	25	1,865.25	1.2
February 1, 2025	222	12	217.75	1,839	-35	1,862.50	1.2
February 8, 2025	215	-7	217.25	1,861	22	1,855.75	1.2
February 15, 2025	224	9	217.75	1,847	-14	1,855.25	1.2
February 22, 2025	243	19	226.00	1,892	45	1,859.75	1.2
March 1, 2025	224	-19	226.50	1,851	-41	1,862.75	1.2
March 8, 2025	223	-1	228.50	1,881	30	1,867.75	1.2
March 15, 2025	225	2	228.75	1,847	-34	1,867.75	1.2
March 22, 2025	225	0	224.25	1,893	46	1,868.00	1.2
March 29, 2025	219	-6	223.00	1,844	-49	1,866.25	1.2
April 5, 2025	224	5	223.25	1,878	34	1,865.50	1.2
April 12, 2025	216	-8	221.00	1,833	-45	1,862.00	1.2
April 19, 2025	223	7	220.50	1,908	75	1,865.75	1.3
April 26, 2025	241	18	226.00	1,872	-36	1,872.75	1.2
May 3, 2025	229	-12	227.25	1,877	5	1,872.50	1.2
May 10, 2025	228	-1	230.25	1,893	16	1,887.50	1.2
May 17, 2025	226	-2	231.00	1,907	14	1,887.25	1.3
May 24, 2025	239	13	230.50	1,902	-5	1,894.75	1.2
May 31, 2025	248	9	235.25	1,951	49	1,913.25	1.3
June 7, 2025	250	2	240.75	1,937	-14	1,924.25	1.3
June 14, 2025	246	-4	245.75	1,964	27	1,938.50	1.3
June 21, 2025	237	-9	245.25	1,956	-8	1,952.00	1.3
June 28, 2025	232	-5	241.25	1,954	-2	1,952.75	1.3
July 5, 2025	228	-4	235.75	1,951	-3	1,956.25	1.3
July 12, 2025	221	-7	229.50	1,946	-5	1,951.75	1.3
July 19, 2025	217	-4	224.50	1,936	-10	1,946.75	1.3
July 26, 2025	219	2	221.25	1,968	32	1,950.25	1.3
August 2, 2025	227	8	221.00	1,942	-26	1,948.00	1.3
August 9, 2025	224	-3	221.75	1,961	19	1,951.75	1.3
August 16, 2025	234	10	226.00	1,944	-17	1,953.75	1.3
August 23, 2025	229	-5	228.50	1,940	-4	1,946.75	1.3
August 30, 2025	237	8	231.00				

INITIAL CLAIMS FILED DURING WEEK ENDED
AUGUST 23

INSURED UNEMPLOYMENT FOR WEEK ENDED
AUGUST 16

STATE NAME	STATE	CHANGE FROM		UCFE ¹	UCX ¹	STATE	(%) ²	CHANGE FROM		UCFE ¹	UCX ¹	TOTAL INSURED UNEMPLOYMENT
		LAST WEEK	YEAR AGO					LAST WEEK	YEAR AGO			
Alabama	1,935	-27	-197	10	7	9,462	0.5	-99	-1,049	57	17	9,536
Alaska	424	4	-73	2	0	3,389	1.1	-82	-14	28	2	3,419
Arizona	3,309	-20	-537	4	4	34,230	1.1	267	1,766	98	54	34,382
Arkansas	1,122	-106	-184	0	1	7,507	0.6	-399	-525	20	5	7,532
California	37,834	-281	-1,076	76	65	366,156	2.0	-12,489	-15,491	896	1,281	368,333
Colorado	2,687	81	156	2	6	30,525	1.1	-2,496	3,877	134	180	30,839
Connecticut	3,304	-455	551	2	0	31,919	1.9	538	1,100	52	32	32,003
Delaware	243	-54	52	2	2	5,852	1.2	-30	190	21	6	5,879
District of Columbia	643	-103	75	43	0	11,394	2.0	-183	4,504	1,611	8	13,013
Florida	6,177	34	-225	20	21	37,064	0.4	-2,403	-2,008	134	81	37,279
Georgia	4,616	-94	-1,190	46	14	28,147	0.6	-143	-2,019	278	88	28,513
Hawaii	956	119	-19	0	10	5,815	1.0	283	4	45	43	5,903
Idaho	796	-31	47	0	1	5,146	0.6	-260	786	9	7	5,162
Illinois	9,911	509	1,941	3	3	101,774	1.7	-896	4,949	357	109	102,240
Indiana	2,653	79	-1,227	5	4	20,093	0.6	-31	-1,063	44	30	20,167
Iowa	1,390	-1,235	-541	5	2	10,295	0.7	1,168	262	14	7	10,316
Kansas	1,045	-161	52	2	0	7,630	0.5	-400	2,558	23	23	7,676
Kentucky	4,487	-103	2,986	1	0	10,768	0.5	612	2,025	31	29	10,828
Louisiana	1,635	-66	-151	2	2	10,016	0.5	-709	-3,231	34	21	10,071
Maine	428	8	42	0	0	5,348	0.8	-97	906	25	7	5,380
Maryland	1,902	-562	-299	48	4	30,446	1.2	-245	4,738	650	67	31,163
Massachusetts	4,309	-64	-1,474	1	0	79,765	2.2	1,278	17,144	136	55	79,956
Michigan	5,073	-319	-1,205	3	2	51,429	1.2	1,280	7,719	84	39	51,552
Minnesota	3,174	-106	-82	3	5	61,100	2.1	-1,616	4,907	73	43	61,216
Mississippi	925	5	-192	4	1	7,378	0.6	-239	264	57	12	7,447
Missouri	2,518	206	56	3	0	19,554	0.7	-1,459	831	57	18	19,629
Montana	418	86	8	4	1	4,176	0.8	-175	316	32	13	4,221
Nebraska	579	-55	-31	1	0	5,009	0.5	-726	492	14	7	5,030
Nevada	2,765	7	-51	1	3	26,346	1.7	-108	1,572	40	63	26,449
New Hampshire	430	-16	36	2	0	4,678	0.7	88	698	3	1	4,682
New Jersey	9,037	-8	223	28	20	116,115	2.8	718	812	233	260	116,608
New Mexico	752	-25	114	2	2	10,151	1.2	-245	89	86	24	10,261
New York	14,790	1,430	-1,506	27	6	164,669	1.7	264	-339	374	216	165,259
North Carolina	3,154	-38	75	3	2	21,998	0.5	-430	1,009	81	100	22,179
North Dakota	222	0	-1,091	0	0	2,151	0.5	-240	340	89	4	2,244
Ohio	5,007	-209	199	8	9	46,373	0.9	-1,659	4,717	118	81	46,572
Oklahoma	1,368	53	170	9	7	11,223	0.7	-361	1,055	32	28	11,283
Oregon	3,788	-290	550	3	3	36,821	1.9	-565	9,343	86	39	36,946
Pennsylvania	9,201	-482	394	13	17	112,573	1.9	-980	6,860	303	103	112,979
Puerto Rico	1,213	-45	-317	8	3	21,158	2.3	2,464	-211	189	39	21,386
Rhode Island	734	-358	129	1	0	12,538	2.6	80	1,714	38	18	12,594
South Carolina	1,920	-281	-195	3	5	15,521	0.7	-908	619	39	45	15,605
South Dakota	139	-35	-38	2	0	1,179	0.3	-63	98	27	2	1,208
Tennessee	2,819	-22	211	3	2	16,715	0.5	-514	-1,883	72	29	16,816
Texas	17,006	1,230	2,013	70	101	172,359	1.3	1,869	12,821	687	850	173,896
Utah	1,424	-53	114	5	1	11,994	0.7	-34	1,239	50	19	12,063
Vermont	261	21	1	0	0	2,585	0.9	213	329	1	0	2,586
Virgin Islands	68	28	-5	0	0	246	0.7	-68	-46	10	0	256
Virginia	2,289	-857	104	24	4	21,559	0.6	334	5,248	185	83	21,827
Washington	4,835	-185	627	5	15	73,241	2.1	-101	13,354	288	395	73,924
West Virginia	651	-13	-33	0	2	6,458	0.9	-178	170	32	20	6,510
Wisconsin	2,598	-166	-554	5	1	22,708	0.8	-485	-2,640	37	14	22,759
Wyoming	244	16	36	1	1	1,610	0.6	-47	233	14	1	1,625
Totals	191,208	-3,009	-1,531	515	359	1,934,356	1.3	-20,707	91,139	8,128	4,718	1,947,202

Figures appearing in columns showing over-the-week changes reflect all revisions in data for prior week submitted by state agencies.

1. The Unemployment Compensation program for Federal Employees (UCFE) and the Unemployment Compensation for Ex-servicemembers (UCX) exclude claims filed jointly under other programs to avoid duplication.
2. Rate is not seasonally adjusted. The source of U.S. total covered employment is BLS.

UNADJUSTED INITIAL CLAIMS FOR WEEK ENDED AUGUST 23, 2025

STATES WITH AN INCREASE OF MORE THAN 1,000

State	Change	State Supplied Comment
NY	+1,430	Layoffs in transportation and warehousing, educational services, and in real estate and rental and leasing industries.
TX	+1,230	Layoffs in the information industry.

STATES WITH A DECREASE OF MORE THAN 1,000

State	Change	State Supplied Comment
IA	-1,235	Fewer layoffs in the manufacturing industry.

TECHNICAL NOTES

This news release presents the weekly unemployment insurance (UI) claims reported by each state's unemployment insurance program offices. These claims may be used for monitoring workload volume, assessing state program operations and for assessing labor market conditions. States initially report claims directly taken by the state liable for the benefit payments, regardless of where the claimant who filed the claim resided. These are the basis for the advance initial claims and continued claims reported each week. These data come from ETA 538, Advance Weekly Initial and Continued Claims Report. The following week initial claims and continued claims are revised based on a second reporting by states that reflect the claimants by state of residence. These data come from the ETA 539, Weekly Claims and Extended Benefits Trigger Data Report.

A. Initial Claims

An initial claim is a claim filed by an unemployed individual after a separation from an employer. The claimant requests a determination of basic eligibility for the UI program. When an initial claim is filed with a state, certain programmatic activities take place and these result in activity counts including the count of initial claims. The count of U.S. initial claims for unemployment insurance is a leading economic indicator because it is an indication of emerging labor market conditions in the country. However, these are weekly administrative data which are difficult to seasonally adjust, making the series subject to some volatility.

B. Continued Weeks Claimed

A person who has already filed an initial claim and who has experienced a week of unemployment then files a continued claim to claim benefits for that week of unemployment. On a weekly basis, continued claims are also referred to as insured unemployment, as continued claims reflect a good approximation of the current number of insured unemployed workers filing for UI benefits. The count of U.S. continued weeks claimed is also a good indicator of labor market conditions. While continued claims are not a leading indicator (they roughly coincide with economic cycles at their peaks and lag at cycle troughs), they provide confirming evidence of the direction of the U.S. economy.

C. Seasonal Adjustments and Annual Revisions

Over the course of a year, the weekly changes in the levels of initial claims and continued claims undergo regularly occurring fluctuations. These fluctuations may result from seasonal changes in weather, major holidays, the opening and closing of schools, or other similar events. Because these seasonal events follow a more or less regular pattern each year, their influence on the level of a series can be tempered by adjusting for regular seasonal variation. These adjustments make trend and cycle developments easier to spot. At the beginning of each calendar year, the Bureau of Labor Statistics provides the Employment and Training Administration (ETA) with a set of seasonal factors to apply to the unadjusted data during that year. Concurrent with the implementation and release of the new seasonal factors, ETA incorporates revisions to the UI claims historical series caused by updates to the unadjusted data. For further questions on the seasonal adjustment methodology, please see the [official release page for the UI claims seasonal adjustment factors](#) or contact BLS directly through the [Local Area Unemployment Statistics web contact form](#).

[Weekly Claims Archives](#) [Weekly Claims Data](#)

U.S. Department of Labor news materials are accessible at <http://www.dol.gov>. The Department's [Reasonable Accommodation Resource Center](#) converts Departmental information and documents into alternative formats, which include Braille and large print. For alternative format requests, please contact the Department at (202) 693-7828 (voice) or (800) 877-8339 (federal relay).

U.S. Department of Labor
Employment and Training Administration
Washington, D.C. 20210
Release Number: USDL 25-1348-NAT

Program Contacts:
Lawrence S Essien: (202) 693-3087
Media Contact: (202) 693-4676