

NEWS RELEASE

BUREAU OF LABOR STATISTICS
U. S. D E P A R T M E N T O F L A B O R



Transmission of material in this release is embargoed until
8:30 a.m. (ET) Friday, July 15, 2022

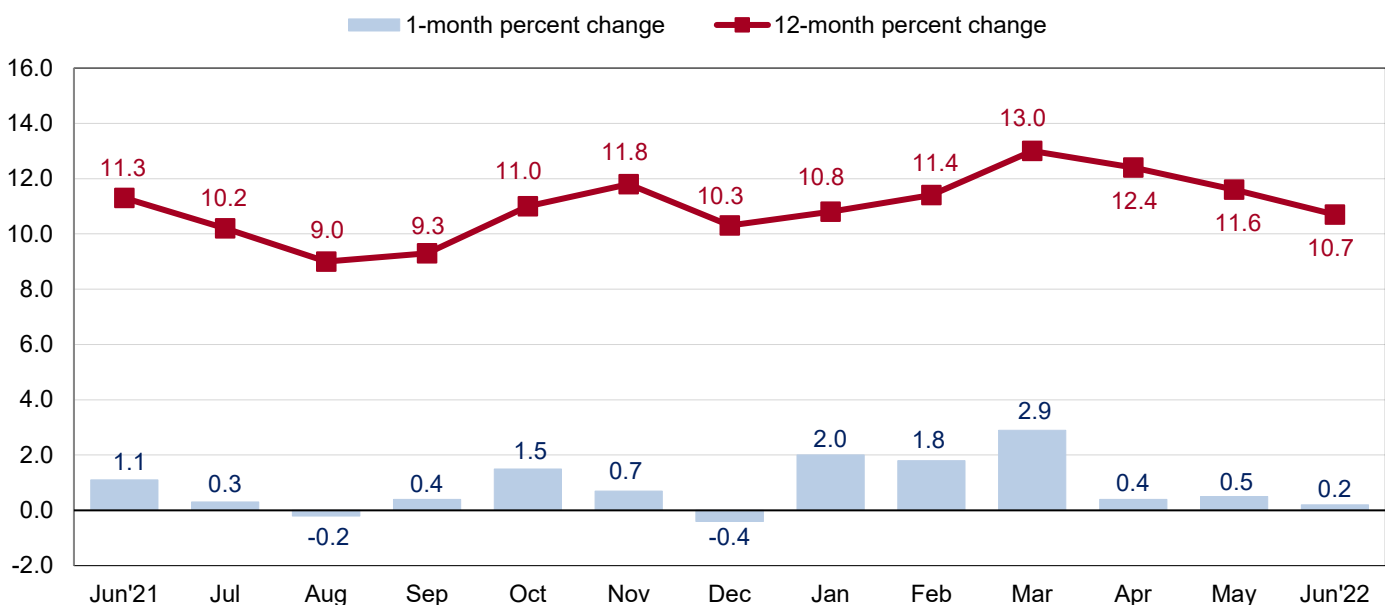
USDL-22-1473

Technical information: (202) 691-7101 • MXPinfo@bls.gov • www.bls.gov/mxp
Media contact: (202) 691-5902 • PressOffice@bls.gov

U.S. IMPORT AND EXPORT PRICE INDEXES – JUNE 2022

Prices for U.S. imports increased 0.2 percent in June following a 0.5-percent advance the previous month, the U.S. Bureau of Labor Statistics reported today. Higher import fuel prices in June more than offset lower nonfuel prices. U.S. export prices rose 0.7 percent in June, after increasing 2.9 percent in May.

Chart 1. One-month and 12-month percent changes in the Import Price Index: June 2021 – June 2022



Imports

The price index for U.S. imports advanced 0.2 percent in June following a 0.5-percent increase in May and a 0.4-percent rise in April. U.S. import prices last recorded a monthly decline in December 2021. The 1.2-percent advance for the second quarter of 2022 was the smallest 3-month increase since a 0.5-percent rise for the third quarter of 2021. Prices for U.S. imports advanced 10.7 percent over the past year. (See table 1.)

Fuel Imports: Prices for import fuel rose 5.7 percent in June, after increasing 6.5 percent the previous month. Import fuel prices have not declined on a monthly basis since December 2021. The price index for import fuel advanced 73.9 percent for the year ended in June, the largest 12-month increase since an 87.0-percent rise in November 2021. Higher prices for petroleum and natural gas in June both contributed to the rise in import fuel prices. Petroleum prices advanced 5.0 percent in June following a 5.8-percent increase in May. Prices for natural gas rose 18.2 percent in June and 22.9 percent in May. Petroleum and natural gas prices advanced from June 2021 to June 2022, increasing 70.6 percent and 165.5 percent, respectively. The 12-month rise in natural gas prices was the largest over-the-year advance since March 2003.

All Imports Excluding Fuel: Nonfuel import prices declined for the second consecutive month, decreasing 0.5 percent in June following a 0.3-percent drop in May. The June decline was the largest 1-month decrease since the index fell 0.5 percent in April 2020. Lower prices for nonfuel industrial supplies and materials; consumer goods; and foods, feeds, and beverages in June more than offset higher capital goods prices. Despite the recent declines, import prices excluding fuel increased 4.6 percent over the past 12 months. The over-the-year rise in June was the smallest 12-month advance since March 2021.

Foods, Feeds, and Beverages: Prices for foods, feeds, and beverages decreased 0.7 percent in June, after falling 0.6 percent in May. The June decline was the largest 1-month drop since November 2020. The decrease in June was led by a 3.9-percent drop in prices for fish and shellfish, the largest 1-month decline since monthly percent changes were first published in January 1994.

Nonfuel Industrial Supplies and Materials: Nonfuel industrial supplies and materials prices fell 2.2 percent in June following a 1.7-percent decline in May. The June drop was the largest monthly decrease since the index declined 3.3 percent in April 2020. The decrease in June was driven by lower prices for unfinished metals and selected building materials.

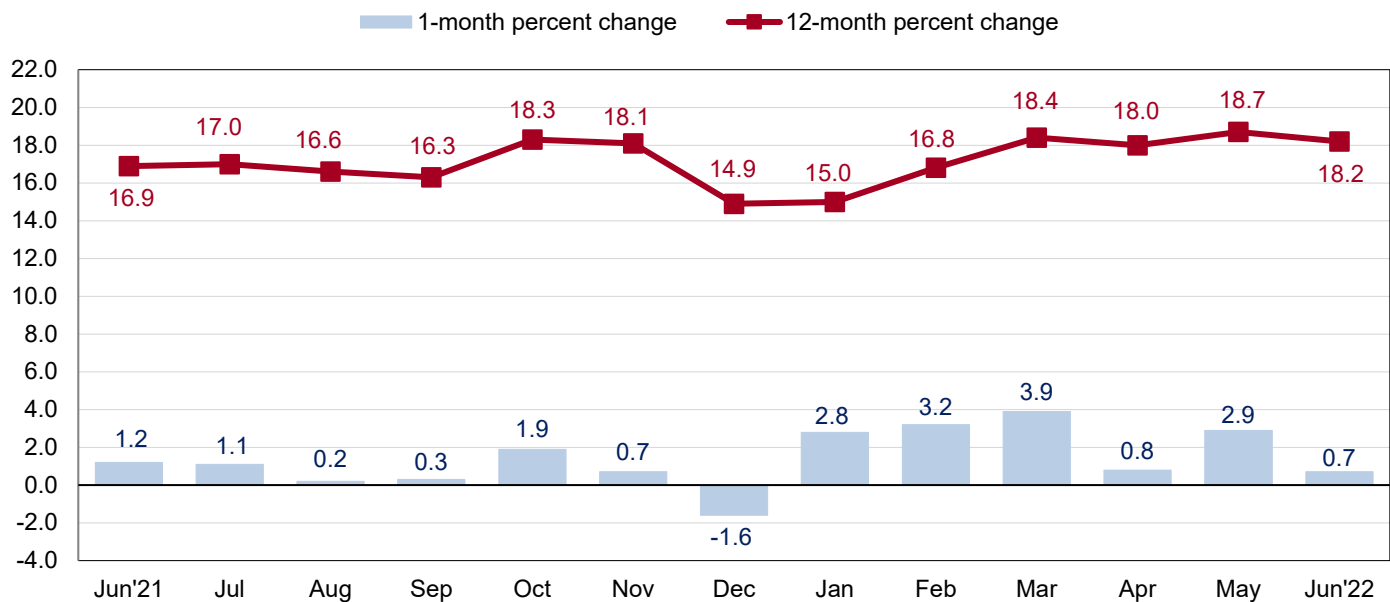
Finished Goods: Prices for the major finished goods categories were mixed in June. Consumer goods prices decreased 0.3 percent, after falling 0.2 percent in May. The June drop was the largest 1-month decline since March 2020. In contrast, capital goods prices rose 0.2 percent for the second consecutive month in June. The June advance in capital goods prices was led by a 2.0-percent increase in semiconductor prices. Prices for automotive vehicles were unchanged in June, after rising 0.4 percent in May.

Table A. Percent change in Import and Export Price Indexes, selected categories

Month	IMPORTS			EXPORTS		
	All imports	Fuel imports	Nonfuel imports	All exports	Agricultural exports	Non-agricultural exports
2021						
June.....	1.1	4.9	0.7	1.2	1.4	1.1
July.....	0.3	2.9	0.0	1.1	-1.7	1.3
August.....	-0.2	-2.2	0.0	0.2	0.9	0.1
September.....	0.4	3.6	0.1	0.3	-1.5	0.5
October.....	1.5	11.1	0.5	1.9	1.1	2.0
November.....	0.7	2.5	0.6	0.7	1.1	0.6
December.....	-0.4	-7.7	0.5	-1.6	0.7	-1.9
2022						
January.....	2.0	7.3	1.4	2.8	3.0	2.8
February.....	1.8	10.6	0.8	3.2	2.9	3.3
March.....	2.9 ^r	17.8 ^r	1.2	3.9 ^r	4.5	3.8 ^r
April.....	0.4	0.8 ^r	0.3 ^r	0.8	1.2	0.9 ^r
May.....	0.5 ^r	6.5 ^r	-0.3	2.9 ^r	2.2 ^r	3.0 ^r
June.....	0.2	5.7	-0.5	0.7	-0.3	0.9
Jun. 2020 to 2021.....	11.3	85.3	6.5	16.9	33.4	15.1
Jun. 2021 to 2022.....	10.7	73.9	4.6	18.2	14.8	18.7

r Revised

Chart 2. One-month and 12-month percent changes in the Export Price Index: June 2021 – June 2022



Exports

Prices for U.S. exports rose 0.7 percent in June, after advancing 2.9 percent the previous month. Higher nonagricultural prices in June more than offset lower agricultural prices. U.S. export prices increased 18.2 percent from June 2021 to June 2022. (See table 2.)

Agricultural Exports: Export agricultural prices fell 0.3 percent in June following a 2.2-percent increase in May. The June decline was the first monthly drop since the index declined 1.5 percent in September 2021. Lower prices for corn, other animal feeds, and cotton in June more than offset higher soybean prices. Despite the June decrease, the price index for agricultural exports advanced 14.8 percent over the past year.

All Exports Excluding Agriculture: The price index for nonagricultural exports increased 0.9 percent in June, after advancing 3.0 percent the previous month. Prices for nonagricultural exports have not declined on a monthly basis since falling 1.9 percent in December 2021. Higher prices for nonagricultural industrial supplies and materials in June more than offset lower prices for nonagricultural food, capital goods, and consumer goods. Nonagricultural export prices rose 18.7 percent for the year ended in June.

Nonagricultural Industrial Supplies and Materials: Nonagricultural industrial supplies and materials prices increased 1.8 percent in June following a 6.0-percent advance in May. Higher fuel prices drove the increase for the second consecutive month. Export fuel prices rose 4.3 percent in June, after advancing 13.2 percent in May.

Finished Goods: Prices for most of the major finished goods categories decreased in June. The price index for capital goods edged down 0.1 percent, the first monthly decline for the index since a 0.2-percent drop in November 2020. The decline in June was led by lower prices for scientific and medical machinery. Consumer goods prices also decreased 0.1 percent in June, after a 0.3-percent drop the previous month. The June decline was driven by lower prices for medical, dental, and pharmaceutical materials. The price index for automotive vehicles was unchanged in June following a 0.3-percent increase in May.

More information for the major import and export price indexes can be found at www.bls.gov/web/ximpim/largest.htm.

Measures of Import and Export Prices by Locality

Imports by Locality of Origin: Import prices from China declined 0.2 percent in June, after no change the previous month. The June decrease was the first monthly drop since the index edged down 0.1 percent in October 2020. Prices for imports from China advanced 3.6 percent over the past 12 months, the smallest over-the-year increase since the index rose 3.6 percent in July 2021. The price index for imports from Japan was unchanged in June following a 0.1-percent decline in May. Import prices from Japan increased 1.7 percent from June 2021 to June 2022. Prices for imports from Canada advanced 0.8 percent in June and import prices from Mexico rose 0.3 percent. The price index for imports from Canada increased 24.7 percent for the year ended in June and import prices from Mexico advanced 9.4 percent over the same period. Import prices from the European Union were unchanged in June and rose 5.3 percent over the past year. (See table 7.)

Exports by Locality of Destination: Prices for exports to China increased 1.4 percent in June, after rising 1.9 percent in May. The price index for exports to China advanced 15.7 percent for the year ended in June. In contrast, export prices to Japan fell 0.8 percent in June following a 2.4-percent increase the previous month. Despite the June decline, prices for exports to Japan rose 15.7 percent over the past 12 months. The price indexes for exports to Canada and Mexico both advanced in June, increasing 0.7 percent and 1.9 percent, respectively. Export prices to Canada increased 16.3 percent from June 2021 to June 2022 and prices for exports to Mexico rose 20.6 percent over the same period. Export prices to the European Union advanced 0.7 percent in June and 12.7 percent over the past year. (See table 8.)

Terms of Trade Indexes: Terms of trade indexes are based on country, region, or grouping and measure the change in the purchasing power of exports relative to imports. U.S. terms of trade with China rose 1.7 percent in June, after a 1.9-percent increase the previous month. Higher export prices to China and lower import prices from China both contributed to the June advance in U.S. terms of trade with China. The index for U.S. terms of trade with China rose 11.7 percent over the past year. U.S. terms of trade with Japan decreased 0.9 percent in June and advanced 13.7 percent over the past 12 months. U.S. terms of trade with Canada also fell in June, edging down 0.1 percent. The index for U.S. terms of trade with Canada decreased 6.7 percent for the year ended in June. In contrast, U.S. terms of trade with Mexico and the European Union rose in June, increasing 1.6 percent and 0.7 percent, respectively. (See table 9.)

Import and Export Services

Imports: Import air passenger fares increased 10.1 percent in June, after advancing 3.2 percent in May and 3.6 percent in April. The June increase was the largest advance since the index rose 10.7 percent in September 2018. Higher European fares, Latin American/Caribbean fares, and Asian fares all contributed to the June rise. The index for import air passenger fares increased 12.8 percent for the year ended in June. Prices for import air freight advanced 6.4 percent in June following a 4.0-percent increase in May. The June rise was the largest advance since the index increased 13.9 percent in November 2021. Import air freight prices rose 9.4 percent over the past 12 months. (See table 10.)

Exports: Export air passenger fares advanced 5.3 percent in June, after increasing 2.6 percent the previous month. Higher Latin American/Caribbean fares, European fares, and Asian fares all contributed to the June increase. The index for export air passenger fares rose 12.0 percent from June 2021 to June 2022. Prices for export air freight declined 2.9 percent in June and increased 22.5 percent over the past 12 months. The June decrease was the first monthly drop since July 2021 and the largest 1-month decline since the index fell 6.7 percent in October 2020.

U.S. Import and Export Price Index data for July 2022 are scheduled for release on Friday, August 12, 2022 at 8:30 a.m. (ET).

Table 1. U.S. import price indexes and percent changes for selected categories of goods: June 2021 to June 2022

[2000=100, unless otherwise noted]

Description	End Use	Relative importance May 2022 ¹	Index		Percent change				
			May 2022	Jun. 2022	Annual	Monthly			
					Jun. 2021 to Jun. 2022	Feb. 2022 to Mar. 2022	Mar. 2022 to Apr. 2022	Apr. 2022 to May 2022	May 2022 to Jun. 2022
All commodities		100.000	148.2	148.5	10.7	2.9	0.4	0.5	0.2
All imports excluding food and fuels (Dec. 2010=100)		80.281	110.4	109.8	4.4	1.3	0.3	-0.3	-0.5
All imports excluding petroleum		87.914	126.6	126.1	5.4	1.1	0.5	-0.2	-0.4
All imports excluding fuels (Dec. 2001=100)		87.076	129.9	129.2	4.6	1.2	0.3	-0.3	-0.5
Foods, feeds, & beverages	0	6.795	211.5	210.1	8.7	0.3	0.9	-0.6	-0.7
Agricultural foods, feeds & beverages, excluding distilled beverages.....	00	5.382	228.7	228.6	9.5	0.2	1.3	-0.9	0.0
Nonagricultural foods (fish, distilled beverages).....	01	1.413	173.2	168.4	5.9	0.8	-0.7	0.6	-2.8
Industrial supplies & materials	1	31.973	303.1	306.0	30.0	9.3	0.7	1.5	1.0
Industrial supplies & materials excluding petroleum.....		19.928	233.3	230.3	13.2	4.0	1.0	-0.8	-1.3
Industrial supplies & materials excluding fuels (Dec. 2001=100).....		18.767	255.3	249.6	8.9	4.6	0.6	-1.7	-2.2
Industrial supplies & materials, durable....		12.896	250.1	240.4	2.2	6.1	0.0	-2.5	-3.9
Industrial supplies & materials nondurable excluding petroleum.....		6.991	212.3	219.2	33.8	0.2	2.9	2.4	3.3
Fuels & lubricants.....	10	12.924	409.8	433.0	73.9	17.8	0.8	6.5	5.7
Petroleum & petroleum products.....	100	12.086	434.9	456.5	70.6	20.0	0.3	5.8	5.0
Crude petroleum.....	10000	8.331	448.7	467.8	65.9	20.3	1.5	3.3	4.3
Fuels, n.e.s.-coals & gas.....	101	0.838	341.3	395.5	141.2	-8.4	10.4	19.3	15.9
Natural gas.....	10110	0.713	344.1	406.7	165.5	-9.5	13.0	22.9	18.2
Paper & paper base stocks.....	11	0.486	132.4	137.3	12.6	-0.7	3.7	1.4	3.7
Materials associated with nondurable supplies & materials.....	12	5.668	222.7	224.8	24.1	1.6	2.0	0.0	0.9
Selected building materials.....	13	2.091	233.1	214.7	-18.2	4.6	-5.9	0.9	-7.9
Unfinished metals related to durable goods.....	14	5.818	398.9	380.2	6.6	9.3	1.9	-3.9	-4.7
Finished metals related to durable goods.....	15	3.291	219.5	214.9	12.5	4.4	-0.5	-3.5	-2.1
Nonmetals related to durable goods.....	16	1.695	128.2	129.1	9.3	0.6	1.4	0.6	0.7
Capital goods	2	24.900	92.9	93.1	4.0	0.4	0.5	0.2	0.2
Electric generating equipment.....	20	3.117	128.6	128.8	5.8	1.4	0.9	0.3	0.2
Nonelectrical machinery.....	21	20.232	84.3	84.4	3.7	0.2	0.5	0.2	0.1
Transportation equipment excluding motor vehicles (Dec. 2001=100).....	22	1.551	143.0	143.5	3.6	0.4	0.3	1.3	0.3
Automotive vehicles, parts & engines	3	11.989	115.6	115.6	3.0	0.1	0.2	0.4	0.0
Consumer goods, excluding automobiles	4	24.344	110.3	110.0	2.0	0.3	0.0	-0.2	-0.3
Nondurables, manufactured.....	40	12.311	124.9	124.8	0.3	0.0	-0.2	-0.2	-0.1
Durables, manufactured.....	41	11.307	95.7	95.2	3.3	0.4	0.2	-0.1	-0.5
Nonmanufactured consumer goods.....	42	0.726	135.2	132.3	9.7	1.8	0.1	0.1	-2.1

¹ Relative importance figures are based on 2020 trade values.

NOTES: Data may be revised in each of the 3 months after original publication.

Dash = Not available

Table 2. U.S. export price indexes and percent changes for selected categories of goods: June 2021 to June 2022

[2000=100, unless otherwise noted]

Description	End Use	Relative importance May 2022 ¹	Index		Percent change				
			May 2022	Jun. 2022	Annual	Monthly			
					Jun. 2021 to Jun. 2022	Feb. 2022 to Mar. 2022	Mar. 2022 to Apr. 2022	Apr. 2022 to May 2022	May 2022 to Jun. 2022
All commodities.....		100.000	165.0	166.2	18.2	3.9	0.8	2.9	0.7
Agricultural commodities.....		12.156	264.9	264.0	14.8	4.5	1.2	2.2	-0.3
All exports excluding food and fuels (Dec. 2010=100).....		65.141	116.2	115.7	5.1	1.2	1.1	-0.2	-0.4
Nonagricultural commodities.....		87.844	157.5	158.9	18.7	3.8	0.9	3.0	0.9
Foods, feeds, & beverages.....	0	11.150	268.3	266.7	13.4	4.9	1.0	2.3	-0.6
Agricultural foods, feeds & beverages, excluding distilled beverages.....	00	10.691	269.5	268.9	13.8	5.1	1.0	2.4	-0.2
Nonagricultural foods (fish, distilled beverages).....	01	0.459	248.4	225.8	3.0	0.6	0.2	0.9	-9.1
Industrial supplies & materials.....	1	46.013	256.2	260.6	36.7	7.1	1.1	5.9	1.7
Industrial supplies & materials, durable....		10.300	229.5	223.9	6.6	3.7	1.9	-2.4	-2.4
Industrial supplies & materials, nondurable.....		35.713	261.0	268.7	48.4	8.2	0.9	8.5	3.0
Agricultural industrial supplies & materials.....	10	1.465	244.5	242.1	22.0	0.6	2.5	0.9	-1.0
Nonagricultural industrial supplies & materials.....		44.548	256.7	261.4	37.3	7.3	1.1	6.0	1.8
Fuels & lubricants.....	11	23.708	363.6	379.4	82.8	12.3	-0.1	13.2	4.3
Nonagricultural supplies & materials excluding fuels & building materials....	12	19.956	214.5	212.2	5.8	2.7	2.2	-1.2	-1.1
Selected building materials.....	13	0.883	171.7	170.9	13.2	4.3	2.4	-0.2	-0.5
Capital goods.....	2	26.343	118.3	118.2	4.2	0.4	0.5	0.3	-0.1
Electrical generating equipment.....	20	2.924	131.3	131.4	7.2	-0.1	0.4	-0.1	0.1
Nonelectrical machinery.....	21	19.148	100.3	100.1	4.1	0.5	0.6	0.3	-0.2
Transportation equipment excluding motor vehicles (Dec. 2001=100).....	22	4.271	195.5	195.4	3.0	0.4	0.4	0.2	-0.1
Automotive vehicles, parts & engines.....	3	6.948	120.4	120.4	4.5	0.8	0.8	0.3	0.0
Consumer goods, excluding automotives.....	4	9.546	116.5	116.4	3.3	0.8	0.5	-0.3	-0.1
Nondurables, manufactured.....	40	5.039	110.3	109.9	-0.3	0.2	0.2	-0.4	-0.4
Durables, manufactured.....	41	3.624	113.4	113.7	4.1	0.8	0.9	-0.1	0.3
Nonmanufactured consumer goods (Dec. 2018=100).....	42	0.883	126.3	126.3	22.1	5.0	0.0	0.2	0.0

¹ Relative importance figures are based on 2020 trade values.

NOTES: Data may be revised in each of the 3 months after original publication.

Dash = Not available

Table 3. U.S. import price indexes and percent changes for selected industries: June 2021 to June 2022
 [December 2005=100, unless otherwise noted]

Description	NAICS	Relative importance May 2022 ¹	Index		Percent change				
			May 2022	Jun. 2022	Annual	Monthly			
					Jun. 2021 to Jun. 2022	Feb. 2022 to Mar. 2022	Mar. 2022 to Apr. 2022	Apr. 2022 to May 2022	May 2022 to Jun. 2022
Nonmanufacturing.....		11.549	199.4	206.7	58.1	13.0	2.0	3.4	3.7
Agriculture, forestry, fishing and hunting.....	11	2.219	219.9	213.5	14.4	-1.3	1.0	-0.6	-2.9
Crop production.....	111	1.802	229.8	225.7	14.9	-2.3	0.6	-0.1	-1.8
Mining.....	21	9.330	209.8	220.8	72.6	17.3	2.2	4.4	5.2
Oil and gas extraction.....	211	9.066	210.7	221.9	73.6	17.9	2.2	4.5	5.3
Manufacturing.....		88.089	126.0	125.7	6.3	1.8	0.2	0.2	-0.2
Manufacturing, part 1.....	31	10.773	138.2	138.5	5.2	0.6	0.5	-0.1	0.2
Food manufacturing.....	311	4.043	187.8	189.1	9.1	1.4	1.1	-0.7	0.7
Beverage and tobacco product manufacturing.....	312	1.043	134.4	134.3	1.3	0.8	0.4	-0.1	-0.1
Textile mills (Dec. 2011=100).....	313	0.393	127.1	127.0	22.0	1.0	0.1	1.0	-0.1
Textile product mills.....	314	1.424	112.0	111.7	1.7	-0.6	-0.1	0.4	-0.3
Apparel manufacturing.....	315	2.755	116.4	116.7	3.1	0.0	0.2	0.3	0.3
Leather and allied product manufacturing.....	316	1.114	127.5	127.1	1.6	-0.1	0.2	0.0	-0.3
Manufacturing, part 2.....	32	21.098	159.1	159.7	12.9	3.7	-0.8	1.9	0.4
Wood product manufacturing (Dec. 2019=100).....	321	1.395	209.2	179.3	-31.0	7.4	-11.6	1.7	-14.3
Paper manufacturing.....	322	0.931	120.6	122.9	6.8	-0.4	2.1	0.6	1.9
Petroleum and coal products manufacturing.....	324	3.373	186.8	198.6	81.2	20.2	-2.9	12.6	6.3
Chemical manufacturing.....	325	11.954	161.9	162.3	9.3	0.8	0.5	-0.2	0.2
Plastics and rubber products manufacturing.....	326	2.395	132.5	133.1	7.6	0.5	1.1	0.2	0.5
Nonmetallic mineral product manufacturing.....	327	0.892	141.2	141.4	5.8	0.2	0.6	0.2	0.1
Manufacturing, part 3.....	33	56.219	113.8	113.2	4.3	1.4	0.4	-0.4	-0.5
Primary metal manufacturing.....	331	7.359	256.5	247.9	6.6	7.8	1.4	-4.1	-3.4
Fabricated metal product manufacturing..	332	3.123	153.5	151.1	10.1	2.0	0.3	0.6	-1.6
Machinery manufacturing.....	333	6.522	127.0	126.9	3.8	0.5	0.4	0.2	-0.1
Computer and electronic product manufacturing.....	334	15.233	74.1	74.2	2.5	0.1	0.1	0.1	0.1
Electrical equipment, appliance, and component manufacturing.....	335	5.131	127.0	127.1	7.1	0.7	0.7	0.1	0.1
Transportation equipment manufacturing..	336	12.422	114.3	114.3	2.3	0.1	0.1	0.3	0.0
Furniture and related product manufacturing.....	337	1.738	126.9	126.2	6.8	0.0	0.2	0.2	-0.6
Miscellaneous manufacturing.....	339	4.690	127.1	126.7	5.1	1.5	0.9	-0.1	-0.3

¹ Relative importance figures are based on 2020 trade values.

NOTES: Data may be revised in each of the 3 months after original publication.

Dash = Not available

Table 4. U.S. export price indexes and percent changes for selected industries: June 2021 to June 2022
 [December 2005=100, unless otherwise noted]

Description	NAICS	Relative importance May 2022 ¹	Index		Percent change				
			May 2022	Jun. 2022	Annual Jun. 2021 to Jun. 2022	Monthly			
						Feb. 2022 to Mar. 2022	Mar. 2022 to Apr. 2022	Apr. 2022 to May 2022	May 2022 to Jun. 2022
Nonmanufacturing.....		21.125	250.1	255.7	52.3	7.2	0.1	7.8	2.2
Agriculture, forestry, fishing and hunting.....	11	6.903	246.6	243.7	19.2	6.8	0.3	2.4	-1.2
Crop production.....	111	6.679	262.2	260.1	20.5	7.3	0.4	2.6	-0.8
Mining.....	21	14.222	166.1	172.7	75.0	7.4	0.1	10.6	4.0
Oil and gas extraction (Dec. 2021=100)...	211	12.661	149.1	156.4	–	7.1	-1.6	12.3	4.9
Mining (except oil and gas).....	212	1.561	190.1	183.2	67.6	10.6	12.5	-1.0	-3.6
Manufacturing.....		77.005	141.2	141.8	12.3	3.1	0.9	1.9	0.4
Manufacturing, part 1.....	31	6.710	179.2	178.7	10.2	1.6	1.9	1.9	-0.3
Food manufacturing.....	311	5.114	212.5	211.3	11.7	1.8	2.3	2.3	-0.6
Beverage and tobacco product manufacturing.....	312	0.506	144.2	147.3	5.6	2.5	0.7	0.6	2.1
Manufacturing, part 2.....	32	27.753	162.3	164.9	26.1	7.1	0.9	5.4	1.6
Wood product manufacturing (Dec. 2017=100).....	321	0.490	143.6	143.1	8.5	5.3	0.0	0.2	-0.3
Paper manufacturing.....	322	1.450	145.9	147.9	9.5	-0.4	1.8	1.0	1.4
Petroleum and coal products manufacturing.....	324	9.703	229.3	239.5	95.5	22.1	-0.8	16.9	4.4
Chemical manufacturing.....	325	13.432	144.9	144.9	3.9	1.1	1.9	0.0	0.0
Plastics and rubber products manufacturing.....	326	1.874	129.4	130.4	9.0	1.3	0.4	-0.3	0.8
Nonmetallic mineral product manufacturing.....	327	0.662	134.7	134.5	8.8	1.6	2.6	0.2	-0.1
Manufacturing, part 3.....	33	42.542	127.0	126.5	4.9	1.0	0.8	-0.1	-0.4
Primary metal manufacturing.....	331	4.223	230.8	223.6	6.0	4.6	2.0	-3.0	-3.1
Fabricated metal product manufacturing...	332	2.327	169.8	169.8	8.8	0.1	0.2	1.6	0.0
Machinery manufacturing.....	333	7.494	141.5	141.2	6.2	0.7	1.1	0.2	-0.2
Computer and electronic product manufacturing.....	334	11.081	84.7	84.7	2.4	0.4	0.5	-0.1	0.0
Electrical equipment, appliance, and component manufacturing.....	335	2.957	129.4	129.5	8.1	0.0	0.6	0.1	0.1
Transportation equipment manufacturing..	336	10.308	137.1	137.2	3.9	0.7	0.7	0.2	0.1
Miscellaneous manufacturing.....	339	3.856	132.5	132.5	6.9	1.6	0.5	0.2	0.0

¹ Relative importance figures are based on 2020 trade values.

NOTES: Data may be revised in each of the 3 months after original publication.

Dash = Not available

Table 5. U.S. import price indexes and percent changes for selected categories of goods: June 2021 to June 2022

[2000=100, unless otherwise noted]

Description	Harmonized system	Relative importance May 2022 ¹	Index		Percent change				
			May 2022	Jun. 2022	Annual	Monthly			
					Jun. 2021 to Jun. 2022	Feb. 2022 to Mar. 2022	Mar. 2022 to Apr. 2022	Apr. 2022 to May 2022	May 2022 to Jun. 2022
Live animals; animal products.....	I	1.537	245.9	237.9	3.9	1.7	0.6	-0.8	-3.3
Meat and edible meat offal.....	02	0.445	344.8	341.2	-7.3	0.7	-1.9	-0.7	-1.0
Fish and crustaceans, molluscs and other aquatic invertebrates.....	03	0.802	174.2	165.6	7.6	1.2	-0.6	1.0	-4.9
Vegetable products.....	II	2.204	253.5	251.0	15.8	-2.2	1.3	-0.2	-1.0
Edible vegetables, roots, and tubers.....	07	0.428	443.0	418.6	9.2	-1.4	1.9	0.7	-5.5
Edible fruit and nuts; peel of citrus fruit or melons.....	08	0.820	129.2	127.6	11.8	-5.7	0.2	-0.3	-1.2
Coffee, tea, mate and spices.....	09	0.431	318.2	323.9	31.1	0.1	4.3	-2.1	1.8
Animal or vegetable fats and oils (Dec. 2009=100).....	III	0.433	157.8	160.4	13.1	5.5	3.0	-4.9	1.6
Prepared foodstuffs, beverages, and tobacco.....	IV	3.064	185.7	187.1	7.0	0.7	0.8	-0.1	0.8
Sugars and sugar confectionary (Dec. 2021=100).....	17	0.202	104.1	105.1	-	0.7	2.3	-1.1	1.0
Cocoa and cocoa preparations (Dec. 2009=100).....	18	0.192	102.3	101.7	4.1	-0.6	-0.5	0.0	-0.6
Beverages, spirits, and vinegar.....	22	1.023	148.0	147.7	1.7	1.0	0.6	0.0	-0.2
Mineral products.....	V	12.879	417.7	440.2	75.4	17.9	0.8	6.4	5.4
Mineral fuels, oils and residuals, bituminous substances and mineral waxes.....	27	12.517	412.9	435.7	76.8	18.5	0.8	6.6	5.5
Products of the chemical or allied industries.....	VI	11.060	179.5	180.4	8.4	0.7	0.4	-0.3	0.5
Inorganic chemicals.....	28	0.752	554.5	583.7	51.5	0.1	2.4	1.7	5.3
Organic chemicals.....	29	2.586	152.0	155.2	10.6	0.9	1.2	0.1	2.1
Pharmaceutical products.....	30	5.060	148.9	148.7	-2.5	0.0	-0.8	-0.5	-0.1
Miscellaneous chemical products.....	38	0.788	117.7	117.3	5.2	0.6	0.0	0.1	-0.3
Plastics and articles thereof; rubber and articles thereof.....	VII	3.674	161.8	162.4	6.1	0.3	0.9	0.2	0.4
Plastics and articles thereof.....	39	2.557	165.4	165.8	5.5	0.3	0.4	-0.2	0.2
Rubber and articles thereof.....	40	1.117	157.8	158.6	7.4	0.3	2.0	1.2	0.5
Articles of leather; travel goods, bags, etc. of various materials.....	42	0.419	142.1	142.2	6.7	0.2	0.5	0.0	0.1
Wood, wood charcoal, cork, straw, basketware and wickerwork.....	IX	1.450	310.1	266.4	-29.3	6.6	-10.6	1.2	-14.1
Wood and articles of wood; wood charcoal (Dec. 2019=100).....	44	1.417	218.2	186.8	-29.8	6.8	-10.8	1.3	-14.4
Woodpulp, recovered paper, and paper products.....	X	0.919	127.9	130.1	8.8	-0.4	2.0	0.5	1.7
Paper and paperboard; articles of paper pulp, paper or paperboard.....	48	0.623	120.0	120.6	12.3	-0.6	1.4	0.8	0.5
Textile and textile articles.....	XI	4.430	120.2	120.4	4.1	-0.2	0.1	0.3	0.2
Articles of apparel and clothing accessories, not knitted or crocheted.....	62	1.263	125.1	125.6	2.5	0.0	0.3	0.4	0.4
Made-up or worn textile articles.....	63	1.213	105.7	105.7	2.3	-0.8	0.1	0.1	0.0
Headgear, umbrellas, artificial flowers, etc.....	XII	0.971	126.2	125.8	0.8	0.2	0.3	-0.2	-0.3
Footwear and parts of such articles.....	64	0.797	123.6	123.0	-0.2	-0.2	0.1	0.2	-0.5
Stone, plaster, cement, asbestos, ceramics, glass etc.....	XIII	0.767	134.3	134.5	1.9	0.2	0.7	-0.1	0.1

See footnotes at end of table.

Table 5. U.S. import price indexes and percent changes for selected categories of goods: June 2021 to June 2022 — Continued

[2000=100, unless otherwise noted]

Description	Harmonized system	Relative importance May 2022 ¹	Index		Percent change				
			May 2022	Jun. 2022	Annual	Monthly			
					Jun. 2021 to Jun. 2022	Feb. 2022 to Mar. 2022	Mar. 2022 to Apr. 2022	Apr. 2022 to May 2022	May 2022 to Jun. 2022
Articles of stone, plaster, cement, asbestos, or mica (Dec. 2020=100).....	68	0.282	101.0	102.0	2.5	0.3	0.5	-0.2	1.0
Glass and glassware (Dec. 2021=100).....	70	0.265	101.8	102.2	-	0.2	0.4	0.3	0.4
Pearls, stones, precious metals, imitation jewelry, and coins.....	XIV	4.551	240.1	235.2	-5.5	6.7	-0.6	-4.9	-2.0
Base metals and articles of base metals. ...	XV	6.319	262.0	253.7	19.0	5.9	2.4	-1.0	-3.2
Iron and steel.....	72	1.256	363.7	347.6	23.0	7.0	9.4	-1.4	-4.4
Articles of iron or steel.....	73	1.861	212.4	206.7	21.0	2.2	0.5	0.4	-2.7
Copper and articles thereof.....	74	0.491	407.9	417.5	-3.4	4.6	0.7	-7.7	2.4
Aluminum and articles thereof.....	76	1.200	223.3	210.6	20.6	9.1	-1.0	0.4	-5.7
Tools, implements, cutlery, spoons and forks, of base metal; parts thereof.....	82	0.402	130.8	130.4	4.4	0.3	1.0	1.2	-0.3
Miscellaneous articles of base metal.....	83	0.512	152.0	152.3	8.8	0.2	2.2	0.7	0.2
Machinery, electrical equipment, TV image and sound recorders, parts, etc.....	XVI	27.104	82.8	82.8	3.4	0.2	0.4	0.2	0.0
Machinery and mechanical appliances; parts thereof.....	84	13.933	89.3	89.1	3.2	0.2	0.5	0.1	-0.2
Electrical machinery and equip, sound and TV recorders & reproducers, parts.....	85	13.171	76.7	76.9	3.6	0.5	0.1	0.4	0.3
Vehicles, aircraft, vessels and associated transport equipment.....	XVII	10.475	118.7	118.8	2.2	0.1	0.1	0.3	0.1
Motor vehicles and their parts.....	87	9.726	118.0	118.0	2.3	0.0	0.0	0.3	0.0
Aircraft, spacecraft, and parts thereof (Dec. 2020=100).....	88	0.663	102.8	103.4	2.7	0.9	0.5	-0.3	0.6
Optical, photo, measuring, medical & musical instruments; & timepieces.....	XVIII	3.632	105.7	105.5	2.9	0.7	1.0	-0.2	-0.2
Optical, photographic, measuring and medical instruments.....	90	3.430	101.7	101.6	3.3	0.8	1.0	-0.1	-0.1
Miscellaneous manufactured articles.....	XX	4.020	117.9	117.6	4.4	0.4	-0.1	-0.1	-0.3
Furniture & stuffed furnishings; lamps & lighting fittings, nesoi; prefab bldgs.....	94	2.445	126.3	125.6	5.2	0.0	0.0	0.0	-0.6
Toys, games and sports equipment; parts and accessories thereof.....	95	1.327	104.1	104.3	2.9	1.3	-0.2	0.0	0.2
Miscellaneous manufactured articles.....	96	0.247	134.9	134.9	4.7	0.0	-0.7	-1.0	0.0

¹ Relative importance figures are based on 2020 trade values.

NOTES: Data may be revised in each of the 3 months after original publication.

Dash = Not available

Table 6. U.S. export price indexes and percent changes for selected categories of goods: June 2021 to June 2022

[2000=100, unless otherwise noted]

Description	Harmonized system	Relative importance May 2022 ¹	Index		Percent change				
			May 2022	Jun. 2022	Annual	Monthly			
					Jun. 2021 to Jun. 2022	Feb. 2022 to Mar. 2022	Mar. 2022 to Apr. 2022	Apr. 2022 to May 2022	May 2022 to Jun. 2022
Live animals; animal products.....	I	2.264	296.5	290.9	12.4	0.2	2.6	2.6	-1.9
Meat & edible meat offal (Dec. 2006=100)...	02	1.440	235.9	234.0	6.0	-0.3	2.0	0.8	-0.8
Vegetable products.....	II	6.413	319.5	318.7	18.4	8.4	-0.2	3.1	-0.3
Edible fruit and nuts; peel of citrus fruit or melons.....	08	0.893	145.6	146.7	4.3	-1.5	1.6	1.4	0.8
Cereals.....	10	2.107	386.5	371.9	25.6	16.5	0.8	4.3	-3.8
Oilseeds and misc. grains, seeds, fruits, plants, straw and fodder.....	12	2.864	338.7	345.3	13.5	7.1	-1.7	2.3	1.9
Prepared foodstuffs, beverages, and tobacco.....	IV	2.799	183.5	182.5	4.6	2.2	1.3	0.3	-0.5
Miscellaneous edible preparations (Dec. 2017=100).....	21	0.543	107.5	106.8	3.5	-0.2	1.0	1.2	-0.7
Beverages, spirits, and vinegar (Dec. 2008=100).....	22	0.431	109.0	108.8	-1.7	0.0	-0.3	-0.5	-0.2
Residues and waste from the food industries; prepared animal feed.....	23	0.894	337.1	331.4	4.4	4.5	3.2	0.2	-1.7
Mineral products.....	V	23.889	440.0	458.5	82.2	12.7	-0.4	13.0	4.2
Ores, slag and ash (Dec. 2012=100).....	26	0.592	157.0	148.1	16.8	5.3	4.2	-2.5	-5.7
Mineral fuels, oils and residuals, bituminous substances and mineral waxes.....	27	23.134	426.5	445.5	85.0	13.0	-0.6	13.6	4.5
Products of the chemical or allied industries.....	VI	10.870	165.8	166.5	8.8	0.7	1.8	0.1	0.4
Organic chemicals.....	29	2.692	203.8	206.3	18.1	2.5	3.7	1.1	1.2
Pharmaceutical products.....	30	2.913	107.5	106.8	-3.3	0.0	0.1	-0.6	-0.7
Essential oils and resinoids; perfumery cosmetic or toilet preparations.....	33	0.735	140.2	139.8	3.5	0.6	-0.4	0.2	-0.3
Soap; lubricants; waxes, polishing or scouring products; candles, pastes.....	34	0.398	132.3	132.3	4.3	0.0	1.2	0.0	0.0
Miscellaneous chemical products.....	38	2.043	188.5	186.1	-1.8	-0.6	-0.1	-0.3	-1.3
Plastics and articles thereof; rubber and articles thereof.....	VII	4.898	177.2	177.0	0.4	2.4	0.4	-0.1	-0.1
Plastics and articles thereof.....	39	4.228	178.1	177.7	-0.7	2.7	0.3	-0.1	-0.2
Rubber and articles thereof.....	40	0.669	166.6	167.0	6.6	0.1	0.6	0.4	0.2
Wood, wood charcoal, cork, straw, baskets and wickerwork (Dec. 2014=100).....	IX	0.600	141.3	139.8	9.8	5.4	0.7	0.4	-1.1
Woodpulp, recovered paper, and paper products.....	X	1.704	152.2	154.3	8.7	0.1	1.3	0.7	1.4
Woodpulp and recovered paper (Dec. 2019=100).....	47	0.637	176.4	181.5	7.4	1.2	0.0	1.3	2.9
Paper and paperboard; articles of paper pulp, paper or paperboard.....	48	0.871	143.5	144.5	11.6	-0.8	2.6	0.2	0.7
Textile and textile articles.....	XI	1.623	155.5	152.7	18.9	-0.2	2.7	1.0	-1.8
Cotton, including yarns and woven fabrics thereof.....	52	0.685	204.1	195.4	41.4	-1.3	6.3	1.5	-4.3
Stone, plaster, cement, asbestos, ceramics, glass etc.....	XIII	0.635	147.0	147.2	10.3	0.7	2.0	0.3	0.1
Glass and glassware (Dec. 2019=100).....	70	0.375	110.2	110.7	10.6	0.7	1.2	0.5	0.5
Pearls, stones, precious metals, imitation jewelry, and coins.....	XIV	3.858	339.9	329.7	-1.3	6.7	0.8	-2.9	-3.0
Base metals and articles of base metals. ...	XV	4.485	225.4	219.3	11.4	2.1	2.7	-2.6	-2.7
Iron and steel (Dec. 2020=100).....	72	1.320	186.3	173.4	20.8	4.1	4.3	-5.6	-6.9

See footnotes at end of table.

Table 6. U.S. export price indexes and percent changes for selected categories of goods: June 2021 to June 2022 — Continued

[2000=100, unless otherwise noted]

Description	Harmoni- zied system	Relative importance May 2022 ¹	Index		Percent change				
			May 2022	Jun. 2022	Annual	Monthly			
					Jun. 2021 to Jun. 2022	Feb. 2022 to Mar. 2022	Mar. 2022 to Apr. 2022	Apr. 2022 to May 2022	May 2022 to Jun. 2022
Copper and articles thereof.....	74	0.544	282.2	291.9	2.5	2.7	1.6	-4.8	3.4
Aluminum and articles thereof.....	76	0.818	165.1	154.5	12.2	3.3	5.9	-4.8	-6.4
Machinery, electrical equipment, TV image and sound recorders, parts, etc.....	XVI	21.860	103.8	103.8	4.5	0.6	0.6	0.2	0.0
Machinery and mechanical appliances; parts thereof.....	84	12.646	124.5	124.4	5.1	0.8	0.6	0.3	-0.1
Electrical machinery and equipment and parts and accessories thereof.....	85	9.214	81.8	81.9	3.8	0.2	0.6	0.0	0.1
Vehicles, aircraft, vessels and associated transport equipment.....	XVII	7.648	146.4	146.4	4.5	0.6	0.8	0.1	0.0
Motor vehicles and their parts.....	87	5.743	123.1	123.1	4.1	0.7	0.9	0.2	0.0
Optical, photo, measuring, medical & musical instruments; & timepieces.....	XVIII	4.788	114.0	113.8	2.2	0.2	0.5	0.2	-0.2
Miscellaneous manufactured articles.....	XX	1.010	128.7	129.1	9.1	0.6	3.0	0.3	0.3
Furniture; stuffed furnishings; lamps and lighting fittings nesoi.....	94	0.542	150.2	150.2	8.6	0.0	5.0	-0.1	0.0
Toys, games and sports equipment; parts and accessories thereof.....	95	0.328	99.7	100.8	10.9	0.0	0.4	0.4	1.1

¹ Relative importance figures are based on 2020 trade values.

NOTES: Data may be revised in each of the 3 months after original publication.

Dash = Not available

Table 7. U.S. import price indexes and percent changes by locality of origin: June 2021 to June 2022
 [2000=100, unless otherwise noted]

Description	Relative importance May 2022 ¹	Index		Percent change					
		May 2022	Jun. 2022	Annual Jun. 2021 to Jun. 2022	Monthly				
					Feb. 2022 to Mar. 2022	Mar. 2022 to Apr. 2022	Apr. 2022 to May 2022	May 2022 to Jun. 2022	
Industrialized Countries²	100.000	156.9	157.2	11.7	4.3	0.1	0.6	0.2	
Nonmanufacturing.....	15.665	366.8	382.7	68.1	15.6	1.7	4.2	4.3	
Manufacturing.....	83.336	140.3	139.6	4.9	2.3	-0.3	0.1	-0.5	
Canada	100.000	215.8	217.5	24.7	8.6	0.0	2.6	0.8	
Nonmanufacturing.....	38.552	367.8	384.8	70.5	15.9	1.8	4.5	4.6	
Manufacturing.....	60.202	176.6	174.0	6.3	4.3	-1.3	1.8	-1.5	
European Union	100.000	152.9	152.9	5.3	1.3	0.3	0.3	0.0	
Manufacturing.....	98.584	148.0	148.1	5.0	1.3	0.2	0.3	0.1	
France (Dec. 2003=100)	100.000	142.9	145.7	8.3	1.6	0.0	-0.2	2.0	
Germany (Dec. 2003=100)	100.000	122.0	121.4	3.3	0.8	0.4	-0.6	-0.5	
United Kingdom (Dec. 2003=100)	100.000	138.0	138.7	6.4	3.2	-1.0	0.7	0.5	
Latin America³	100.000	176.1	176.1	12.7	2.4	1.2	1.2	0.0	
Nonmanufacturing.....	18.552	391.4	398.4	41.8	8.0	3.0	3.2	1.8	
Manufacturing.....	81.187	137.8	137.3	7.7	1.3	0.9	0.7	-0.4	
Mexico (Dec. 2003=100)	100.000	144.5	144.9	9.4	1.4	0.9	0.8	0.3	
Nonmanufacturing (Dec. 2008=100).....	12.376	205.6	206.9	44.0	8.4	4.7	1.6	0.6	
Manufacturing (Dec. 2008=100).....	87.364	96.1	96.4	5.8	0.5	0.3	0.6	0.3	
Pacific Rim (Dec. 2003=100)⁴	100.000	105.5	105.4	4.9	0.9	0.3	0.2	-0.1	
China (Dec. 2003=100)	100.000	104.8	104.6	3.6	0.5	0.1	0.0	-0.2	
Japan	100.000	100.2	100.2	1.7	0.6	0.3	-0.1	0.0	
Taiwan (Dec. 2018=100)	100.000	111.8	112.0	9.1	1.2	0.2	0.8	0.2	
Asian NICs⁵	100.000	101.3	101.4	10.9	2.5	0.1	1.4	0.1	
ASEAN (Dec. 2003=100)⁶	100.000	106.3	106.6	6.8	1.2	0.9	1.2	0.3	
Asia Near East (Dec. 2003=100)⁷	100.000	270.7	272.1	39.3	12.3	3.5	1.7	0.5	

¹ Relative importance figures are based on 2020 trade values.

² Western Europe, Canada, Japan, Australia, New Zealand, and South Africa.

³ Mexico, Central America, South America, and the Caribbean.

⁴ China, Japan, Australia, Brunei, Indonesia, Macao, Malaysia, New Zealand, Papua New Guinea, Philippines, and the Asian Newly Industrialized Countries.

⁵ Asian Newly Industrialized Countries - Hong Kong, Singapore, South Korea, and Taiwan.

⁶ Association of Southeast Asian Nations - Brunei, Cambodia, Indonesia, Laos, Malaysia, Myanmar, Philippines, Singapore, Thailand, and Vietnam.

⁷ Bahrain, Iran, Iraq, Israel, Jordan, Kuwait, Lebanon, Oman, Qatar, Saudi Arabia, Syria, United Arab Emirates, and Yemen.

NOTES: Data may be revised in each of the 3 months after original publication.

Regions are not mutually exclusive.

Dash = Not available

Table 8. U.S. export price indexes and percent changes by locality of destination: June 2021 to June 2022
 [December 2017=100, unless otherwise noted]

Description	Relative importance May 2022 ¹	Index		Percent change					
		May 2022	Jun. 2022	Annual Jun. 2021 to Jun. 2022	Monthly				
					Feb. 2022 to Mar. 2022	Mar. 2022 to Apr. 2022	Apr. 2022 to May 2022	May 2022 to Jun. 2022	
Industrialized Countries²	100.000	127.2	127.5	14.2	3.7	0.8	1.5	0.2	
Nonmanufacturing.....	18.294	190.0	193.5	52.1	11.9	0.4	5.7	1.8	
Manufacturing.....	80.037	119.1	119.0	8.5	1.9	0.9	0.8	-0.1	
Canada	100.000	132.9	133.8	16.3	3.0	1.2	1.8	0.7	
Nonmanufacturing (Dec. 2020=100).....	13.769	192.1	198.3	52.7	8.4	1.1	5.7	3.2	
Manufacturing (Dec. 2020=100).....	84.836	120.0	120.3	12.2	2.3	1.2	1.3	0.3	
European Union	100.000	125.0	125.9	12.7	4.6	-0.2	1.7	0.7	
Nonmanufacturing.....	22.527	183.1	186.8	49.9	15.4	-1.3	4.1	2.0	
Manufacturing.....	75.827	114.5	114.8	5.4	1.9	0.0	1.1	0.3	
Germany	100.000	114.0	114.1	3.8	1.7	0.7	0.8	0.1	
Latin America³	100.000	149.1	152.3	27.7	5.5	0.5	6.7	2.1	
Nonmanufacturing.....	14.010	251.7	260.0	67.2	2.7	4.6	13.9	3.3	
Manufacturing.....	85.523	140.5	143.0	22.9	6.0	-0.2	5.8	1.8	
Mexico	100.000	143.8	146.6	20.6	3.6	1.2	4.8	1.9	
Nonmanufacturing.....	12.821	242.4	252.3	70.7	-2.9	9.8	18.4	4.1	
Manufacturing.....	86.814	136.4	138.7	15.7	4.3	0.2	3.1	1.7	
Pacific Rim⁴	100.000	125.2	123.9	12.3	3.6	0.3	1.4	-1.0	
Nonmanufacturing.....	28.530	167.1	163.0	34.5	10.3	-2.0	4.0	-2.5	
Manufacturing.....	69.259	114.6	114.0	6.6	1.0	1.3	0.7	-0.5	
China	100.000	124.4	126.2	15.7	5.0	-0.2	1.9	1.4	
Nonmanufacturing.....	38.338	155.3	160.9	30.1	13.0	-2.9	5.5	3.6	
Manufacturing.....	60.196	113.3	113.2	5.3	0.5	1.4	0.1	-0.1	
Japan	100.000	130.8	129.7	15.7	5.0	0.6	2.4	-0.8	
Nonmanufacturing.....	34.170	187.6	190.2	43.4	14.9	-2.4	5.3	1.4	
Manufacturing.....	64.252	112.5	110.7	6.0	0.1	2.4	1.0	-1.6	

¹ Relative importance figures are based on 2020 trade values.

² Western Europe, Canada, Japan, Australia, New Zealand, and South Africa.

³ Mexico, Central America, South America, and the Caribbean.

⁴ China, Japan, Australia, Brunei, Indonesia, Macao, Malaysia, New Zealand, Papua New Guinea, Philippines, and the Asian Newly Industrialized Countries.

NOTES: Data may be revised in each of the 3 months after original publication.

Regions are not mutually exclusive.

Dash = Not available

Table 9. U.S. terms of trade indexes and percent changes by locality: June 2021 to June 2022¹
 [December 2017=100, unless otherwise noted]

Description	Index		Percent change				
	May 2022	Jun. 2022	Annual	Monthly			
			Jun. 2021 to Jun. 2022	Feb. 2022 to Mar. 2022	Mar. 2022 to Apr. 2022	Apr. 2022 to May 2022	May 2022 to Jun. 2022
Industrialized Countries²	99.2	99.3	2.3	-0.5	0.7	0.8	0.1
Canada	80.9	80.8	-6.7	-5.1	1.1	-0.9	-0.1
European Union	110.0	110.8	7.1	3.2	-0.5	1.4	0.7
Germany	107.6	108.2	0.5	1.0	0.3	1.4	0.6
Latin America³	126.1	128.8	13.3	3.0	-0.7	5.5	2.1
Mexico	128.4	130.5	10.2	2.2	0.2	4.1	1.6
Pacific Rim⁴	116.8	115.7	7.1	2.8	0.0	1.2	-0.9
China	118.8	120.8	11.7	4.5	-0.3	1.9	1.7
Japan	124.7	123.6	13.7	4.3	0.2	2.5	-0.9

¹ Terms of trade indexes are derived by dividing the export price index by the corresponding import price index and multiplying by 100.

² Western Europe, Canada, Japan, Australia, New Zealand, and South Africa.

³ Mexico, Central America, South America, and the Caribbean.

⁴ China, Japan, Australia, Brunei, Indonesia, Macao, Malaysia, New Zealand, Papua New Guinea, Philippines, and the Asian Newly Industrialized Countries.

NOTES: Data may be revised in each of the 3 months after original publication.

Regions are not mutually exclusive.

Dash = Not available

Table 10. U.S. international price indexes and percent changes for selected transportation services: June 2021 to June 2022

[2000=100, unless otherwise noted]

Description	Relative importance May 2022 ¹	Index		Percent change				
		May 2022	Jun. 2022	Annual Jun. 2021 to Jun. 2022	Monthly			
					Feb. 2022 to Mar. 2022	Mar. 2022 to Apr. 2022	Apr. 2022 to May 2022	May 2022 to Jun. 2022
Air Freight								
Import Air Freight	100.000	356.6	379.6	9.4	2.7	-4.6	4.0	6.4
Europe (Dec. 2003=100).....	27.482	324.1	299.7	18.4	3.5	5.7	0.7	-7.5
Asia.....	72.253	343.6	384.2	5.3	2.4	-8.2	5.3	11.8
Export Air Freight	100.000	214.6	208.3	22.5	4.6	0.7	3.1	-2.9
Europe (Dec. 2006=100).....	28.776	180.4	173.8	18.4	-2.6	5.4	3.7	-3.7
Asia (Dec. 2011=100).....	49.497	166.2	160.9	30.9	10.6	-2.5	1.8	-3.2
Inbound Air Freight	100.000	267.7	269.1	1.8	0.4	-4.2	2.8	0.5
Europe (Dec. 2003=100).....	25.263	218.9	200.8	13.9	7.0	-1.7	1.8	-8.3
Asia.....	66.229	269.2	281.2	0.8	-1.2	-5.9	4.5	4.5
Outbound Air Freight	100.000	219.8	225.4	58.8	3.2	5.2	-1.3	2.5
Europe (Dec. 2003=100).....	29.902	210.1	205.1	25.1	-5.3	14.9	0.6	-2.4
Asia.....	52.863	239.3	253.5	104.3	8.7	2.2	-4.3	5.9
Air Passenger Fares								
Import Air Passenger Fares	100.000	173.5	191.1	12.8	8.6	3.6	3.2	10.1
Europe.....	38.944	195.7	214.1	31.3	9.3	2.2	5.7	9.4
Asia.....	22.250	198.1	216.2	4.7	7.9	8.4	8.2	9.1
Latin America/Caribbean.....	11.303	126.0	156.4	17.1	13.4	7.3	-5.7	24.1
Export Air Passenger Fares	100.000	180.4	190.0	12.0	7.0	0.1	2.6	5.3
Europe.....	26.609	214.6	228.5	17.4	7.4	-0.7	4.3	6.5
Asia.....	24.042	199.7	202.9	13.0	2.3	-14.5	7.3	1.6
Latin America/Caribbean.....	31.286	170.9	188.1	18.2	12.0	12.5	0.8	10.1

¹ Relative importance figures are based on 2020 trade values.

NOTES: Data may be revised in each of the 3 months after original publication.

Dash = Not available

TECHNICAL NOTE

Import and Export Goods and Services Price Indexes - All indexes use a modified Laspeyres formula and are not seasonally adjusted. Price indexes are reweighted annually, with a 2-year lag in the weights. Published series use a base year of 2000=100 where possible. More detailed index series and additional information may be obtained at www.bls.gov/mxp or by calling (202) 691-7101.

Merchandise Goods Classification Systems - The merchandise price indexes are published using three classification systems. Items are classified by end use according to the Bureau of Economic Analysis Classification System, by industry according to the North American Industry Classification System (NAICS), and by product category according to the Harmonized System (HS). While classification by end use and product category are self-explanatory, some notes are in order for classifying items by industry. In the NAICS imports and exports tables, items are classified by output industry, not input industry. As an example, NAICS import index 326 (plastics and rubber products manufacturing) includes outputs such as manufactured plastic rather than inputs such as petroleum. The NAICS classification structure also matches the classification system used by the Producer Price Index (PPI) to produce the NAICS primary products indexes.

Import Price Goods Indexes - Items are classified by the Harmonized Tariff Schedule of the United States Annotated (TSUSA). Import prices are based on U.S. dollar prices paid by the U.S. importer. The prices are generally either "free on board" (f.o.b.) foreign port or "cost, insurance, and freight" (c.i.f.) U.S. port transaction prices, depending on the practices of the individual industry. The index for crude petroleum is calculated from data collected by the U.S. Department of Energy.

Export Price Goods Indexes - Items are classified by the Harmonized Schedule B classification system of the U.S. Bureau of the Census. The prices used are generally either "free alongside ship" (f.a.s.) factory or "free on board" (f.o.b.) transaction prices, depending on the practices of the individual industry. Prices used in the grain index, excluding rice, are obtained from the U.S. Department of Agriculture.

Services Price Indexes - Indexes for import and export air passenger fares calculate changes in the average revenue received per passenger by foreign carriers from U.S. residents and by U.S. carriers from foreign residents, respectively. Data are obtained from an airline consulting service and report on tickets sold by travel agencies, travel websites, and directly by the airlines. Taxes and fees are included in both the import and export air passenger fares indexes. Import air passenger fares data have used the airline consulting service source since September 2008. Before April 2018, the export air passenger fares data were collected directly by BLS from U.S. airlines. The air freight indexes are calculated from data collected directly from airlines. These data exclude mail and passenger baggage. The scope of the service being priced is the movement of freight from airport to airport only, and does not include any ground transportation or port service. The air freight indexes are presented using two definitions: balance of payments (which represents transactions between U.S. and foreign residents) and international (which represents transactions inbound to and outbound from the United States.) Fact sheets specifying detailed information for each services industry are available at www.bls.gov/mxp under "MXP Publications."

Import Price Indexes by Locality of Origin - Prices used in these indexes are a subset of the data collected for the import price indexes. The indexes are specific to a country, region, or grouping and, beginning with January 2002, are based on the North American Industry Classification System (NAICS) covering goods-producing industries. Nonmanufactured goods are defined as NAICS 11 and 21, and manufactured goods are defined as NAICS 31-33.

Export Price Indexes by Locality of Destination - Prices used in these indexes are a subset of the data collected for the export price indexes. The indexes are specific to a country, region, or grouping and are based on the North American Industry Classification System (NAICS) covering goods-producing industries. Nonmanufactured goods are defined as NAICS 11 and 21, and manufactured goods are defined as NAICS 31-33.

Terms of Trade Indexes - Terms of trade indexes measure the relative price of exports in terms of import prices for a specific country, region, or grouping. The indexes are calculated as one country, region, or grouping's all-export goods price index divided by the corresponding all-import goods price index on a scale of 100.

Relative Importance - A relative importance is a specific index's price-updated value share (expressed as a percentage) of overall imports or exports at a specific point in time. Relative importance values are affected by the trade weights at the point indexes are reweighted and index changes relative to other indexes since the reweight point. If an index is rising in value relative to other indexes over time, the relative importance will increase as well.

Revision Policy - To reflect the availability of late reports and corrections by respondents, monthly data may be revised in each of the 3 months after original publication. After 3 months, no further data revisions take place. For example, data first published in the January release will be subject to revision in the releases for February, March, and April.

Rounding Policy - Index values are rounded to the tenth decimal place after being calculated. All percent changes are then derived from the rounded index values and subsequently rounded to the tenth decimal place.

Uses of the Data - The primary use of the indexes is to deflate trade statistics, notably the foreign trade sector of the National Income and Product Accounts (NIPA) constructed by the Department of Commerce. Other published indexes are useful for general market analysis. For trade in international services, balance of payments indexes are used for deflating NIPA, while international indexes are more appropriate for market analysis.

Email Subscription - The U.S. import and export price indexes news release is available through an email subscription service at www.bls.gov/bls/list.htm.

Additional Information - More detailed data are available on the Import/Export Price Indexes home page at www.bls.gov/mxp. For import and export price indexes data requests, send an email to mxpinfo@bls.gov.

If you are deaf, hard of hearing, or have a speech disability, please dial 7-1-1 to access telecommunications relay services.