

# *In Observance of National Disability Employment Awareness Month*

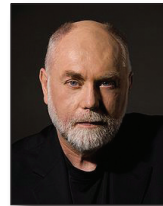
Please join U.S. Labor Secretary Hilda L. Solis for  
a panel discussion on people with disabilities  
in the performing and visual arts.



**Hilda L. Solis**  
*U.S. Secretary of Labor*



**Fred Beam**  
*Performance Artist*  
"Black Deaf Male:  
Who am I?"



**Robert David Hall**  
*Advocate and Actor*  
"CSI: Crime Scene  
Investigation"

**Thursday, October 22, 2009  
from 10:30 a.m. - 11:30 a.m.**

U.S. Department of Labor Auditorium  
200 Constitution Avenue, NW  
(entrance at 3<sup>rd</sup> and C Street, NW)  
Washington, DC



RSVP to Clarisse Young at 202-693-5051 or [young.clarisse@dol.gov](mailto:young.clarisse@dol.gov)

**Expectation + Opportunity = Full Participation**

